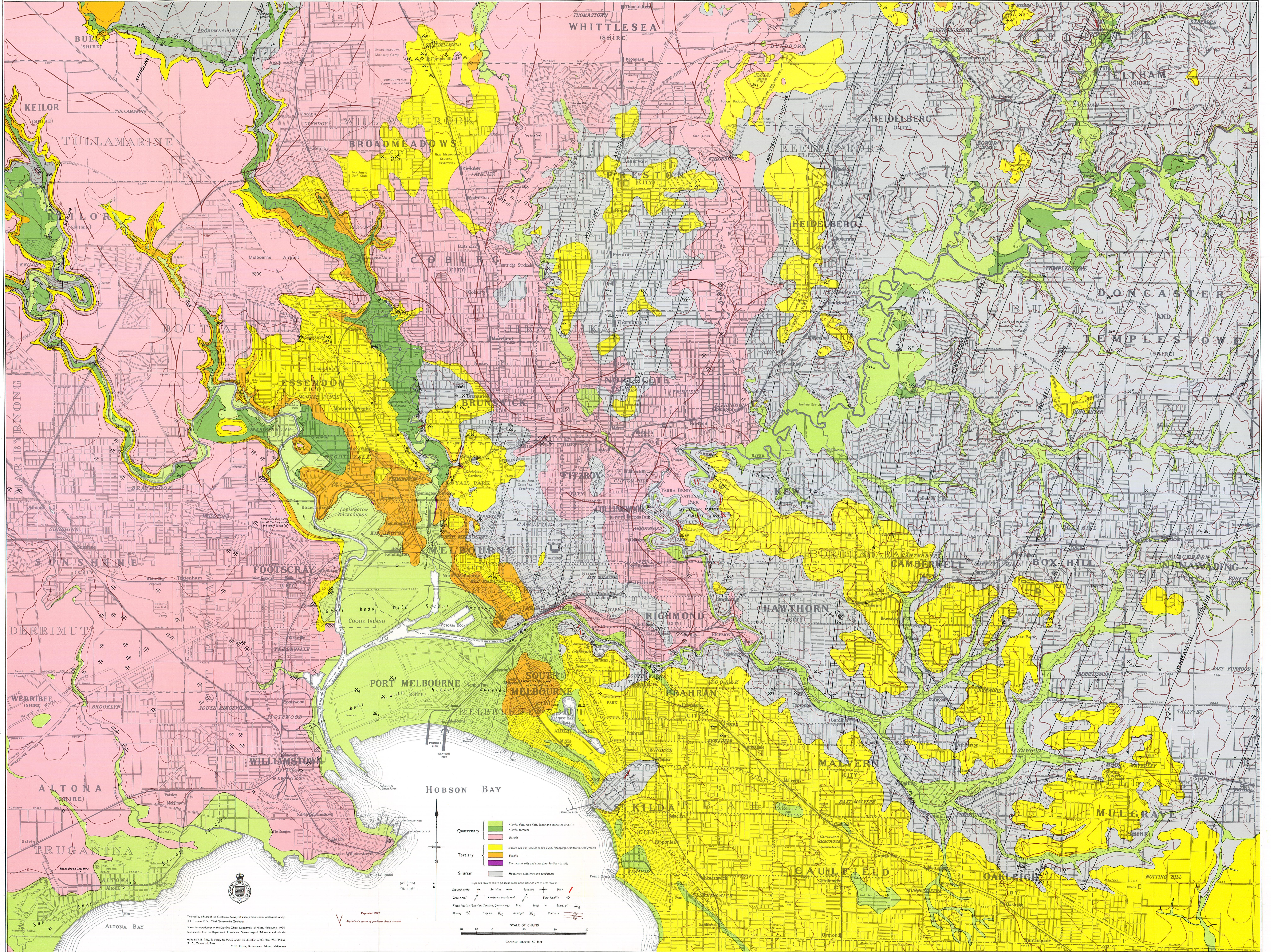


MELBOURNE AND SUBURBS



Modified by officers of the Geological Survey of Victoria from earlier geological surveys.
 D. G. Hoare, D.S., Chief Geologist's Catalogue
 Drawn for reproduction in the Drawing Office, Department of Mines, Melbourne, 1970
 from a map from the Department of Lands and Survey, Melbourne, and Scale
 based by I. B. Tate, Secretary for Mines, under the direction of the Hon. W. J. Mack
 M.L.A., Minister of Mines.
 © R. Bates, Government Printer, Melbourne
 Reprinted 1972
 Approximate points of view from East street