

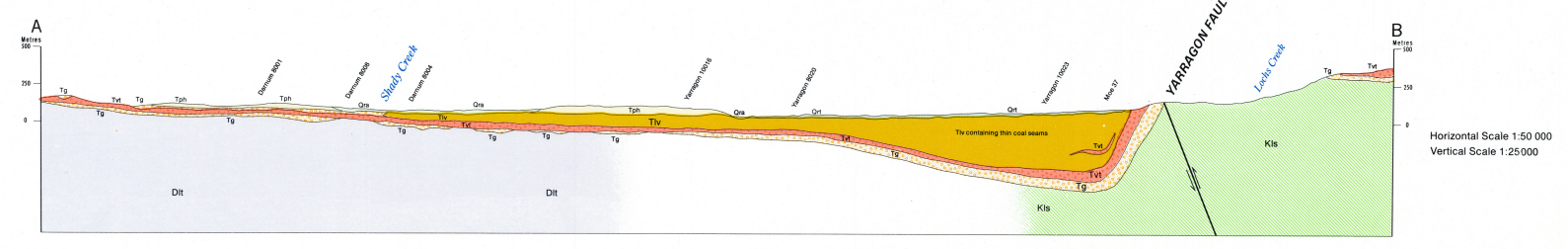
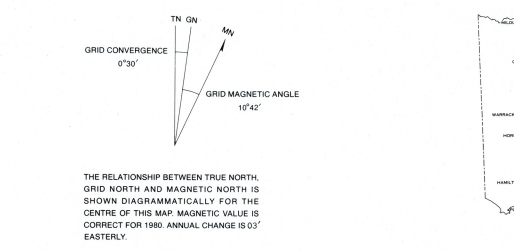
		SEDIMENTARY		IGNEOUS	
		Marine	Non-marine	Extrusive	Intrusive
QUATERNARY	RECENT		Qra Qrc		
	PLEISTOCENE		Qpt		
	PLIOCENE		Tph		
TERTIARY	MIOCENE		Tg		
	OLIGOCENE		Th	Tvt	
	EOCENE				
	Major Unconformity				
CRETACEOUS	LOWER	Aptian	Ks		
	Major Unconformity				
DEVONIAN	MIDDLE	Zichevian	Dz		
		Pragian	Dpr		
	LOWER	Lockhevan	Dlo		
			Dlw		
SILURIAN	UPPER	Priddian	Sus		
		Ladlivan			
	MIDDLE	Wetlockian	Smb		

- Qra** Stream alluvium, very low terraces: brown to dark grey, carbonaceous clay, silt, sand, minor gravel, slight soil development. Flood plain surface displays channels, meanders, scrolls.
- Qrc** Alluvial fan deposits: gravel, sand, silt; often poorly sorted, angular clasts.
- Qpt** Alluvial terrace deposits: brown-grey clay, silt, sand, minor gravel; shallow soil development.
- Qpt** High level alluvial terrace deposits: gravel, sand, silt, clay; terraces deeply dissected, often with sloping surfaces; soils well developed.
- Tph** Haunted Hill Gravels: Gravel, sand, often clayey, minor silt, clay; unconsolidated, intensely mottled to red, a yellow and grey when clayey. Coarse and graded bedding, minor lamination. Contains ferruginous bands, palaeosols.
- Tg** Undifferentiated gravel, sand, silt, clay; carbonaceous, rare brown coal; cross bedded, poorly bedded, basally siltified; (sometimes adjacent to Tvt basalt), ferruginous altered porcellanite; includes Childers formation possibly part of Haunted Hill Gravels, Loddon Valley Coal Measures equivalents.
- Th** Clay, silt, minor gravel, thick brown coal seams to 150m thick, minor interbedded basalt, widespread suburface beneath Upper Cainozoic deposits.
- Tvt** Basalt, olivine basalt, nephelinite, minor tuff, interbedded sandstone, siltstone, often deeply weathered to form deep red franciscan soils with high landscape potential in Narracan area.
- Ks** Undifferentiated Strzelecki Group: sandstone, thin interbedded mudstone, thin black coal, rare muscovite conglomerate, sandstones, siltstones and shales, green-grey in colour when fresh, commonly brown-buff in exposures. Sandstones massive, sometimes thinly bedded, graded; plant fossils.
- Dz** Sandstone, siltstone, rare conglomerate, includes Norton Gully Sandstone comprising massive coarse grained graded sandstone, interbedded, siltstone, and Mory's Hill Formation, comprising structurally coarse siltstone, thinly bedded fine, rippled sandstone; abundant plant fragments.
- Dlo** Black shale, laminated, fossiliferous, contains graptolites.
- Dlw** Siltstone, grey and brown, well bedded to structureless, abundant dolouration; thin quartz-rich and chert bearing sandstone.
- Sus** Sandstone, grey, fine grained, graded, interbedded laminated grey siltstone containing graptolites.
- Smb** Siltstone, grey to yellow colour, massive to laminated, thinly bedded fine sandstone.

- Geological boundary
- Fault, position approximate or inferred
- Fault, reverse
- Syncline
- Syncline, position approximate
- Anticline
- Anticline, position approximate
- Strike with dip
- Government bore
- Quartz reef
- Auriferous reef
- Dyke
- Shaft
- Adit or Tunnel
- Plant fossil, Mesozoic (refer to Geol. Survey Memoir 28)
- Plant fossil (Palaeozoic)
- Fossil fossil
- Oil and Gas pipeline
- Younger Deep Lead, position known
- Younger Deep Lead, position doubtful
- Alluvial Gold Workings
- Contour (20 metre interval)
- Subsurface Brown Coal
- Highway
- Main connecting road
- Other roads
- Trace
- Railway Line
- Power transmission line
- Parish boundary
- Parish name
- Ting Station
- Watercourse
- Drain, channel

INDEX TO ADJOINING SHEETS

NEERIM 8022-2	MOJEE 8122-3	WALHALLA 8122-2
DARNUM 8021-1	TRAFALGAR 8121-4	MOE 8121-1
KORUMBURRA 8021-2	MIRRO MURTH 8121-3	YARRAGON 8121-2



Geology compiled and partly remapped by P. F. Bojler BSc(Hons) and S. P. Carey BSc(Hons) 1979.
Acknowledgements: O. A. L. Whitlaw, A. H. M. Vanden Berg, R. G. Thorne, W. J. R. Blake, State Electricity Commission of Victoria.
Supervising Geologist, Regional Geology: J. G. Douglas MSc, PhD, Acting Director of Geological Survey, P. R. Kenney BSc.
Cartography: C. E. Bennick 1983, Chief Draughting Officer: W. J. Bennett, MAIC.
Base detail courtesy of the Department of Crown Lands and Survey 1972.
Published by the Department of Minerals and Energy.
Printed by G. Anderson Government Printers, 1983.
© Crown (State of Victoria) copyright 1983.
Reproduction without permission is forbidden.