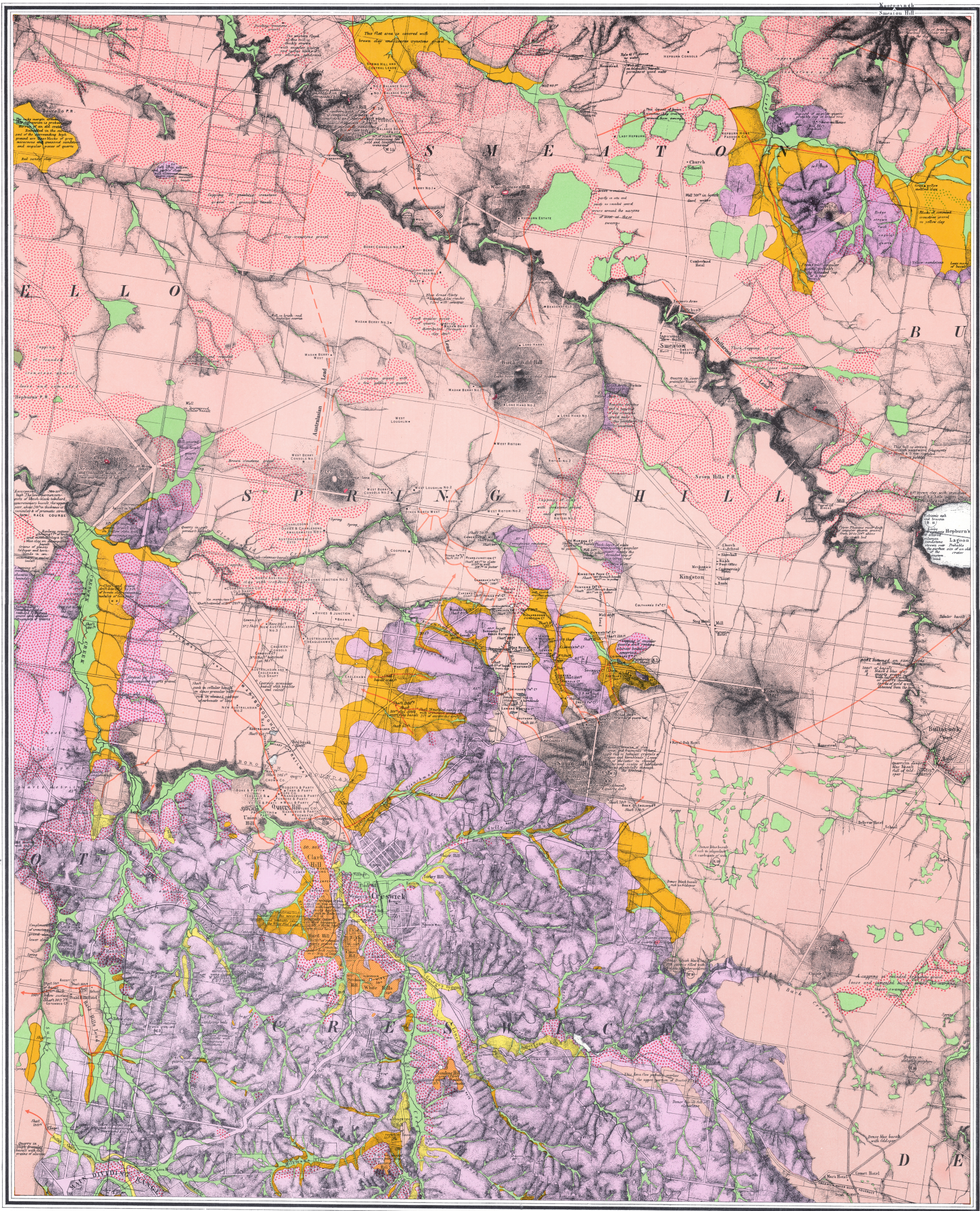
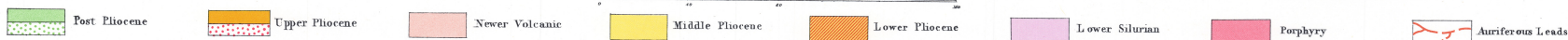


CRESWICK GOLD FIELD



Geologically and Topographically surveyed by Ferdinand M Krauss under the direction of Thos Cushman Secretary for Mines and Chief Mining Surveyor for the Colony of Victoria. The Hon. Robt Clark Minister of Mines.

Lithographed by R. Shepherd. Printed by J. Fooks's Printing Department Melbourne, 1880. Reprinted with additional shaft and lead detail F. D. Atkinson, Government Printer, 1981.



Dip of strata & Quartz Reefs | Points of eruption | Locality and mark of specimen in Mining Department collection | Parish boundary

Note: The Lower Silurian areas are now regarded as Lower Ordovician