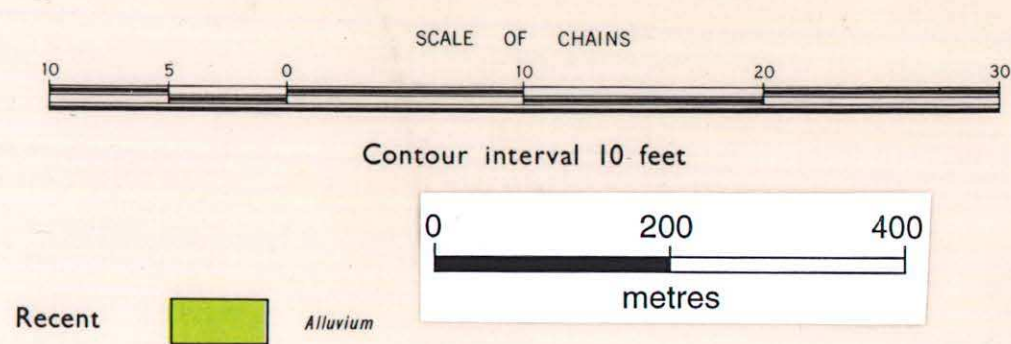


CHEWTON GOLDFIELD

ARISHES OF CASTLEMAINE, CHEWTON, FARADAY AND FRYERS

For continuation, see Northern Portion

1:6336



Recent	Alluvium	
Tertiary	Gravel	
Lower Ordovician	Cs 3	Castlemaine
	Cs 2	
	Cs 1	Chewtan
	Es 4	
	Es 3	Sandgully

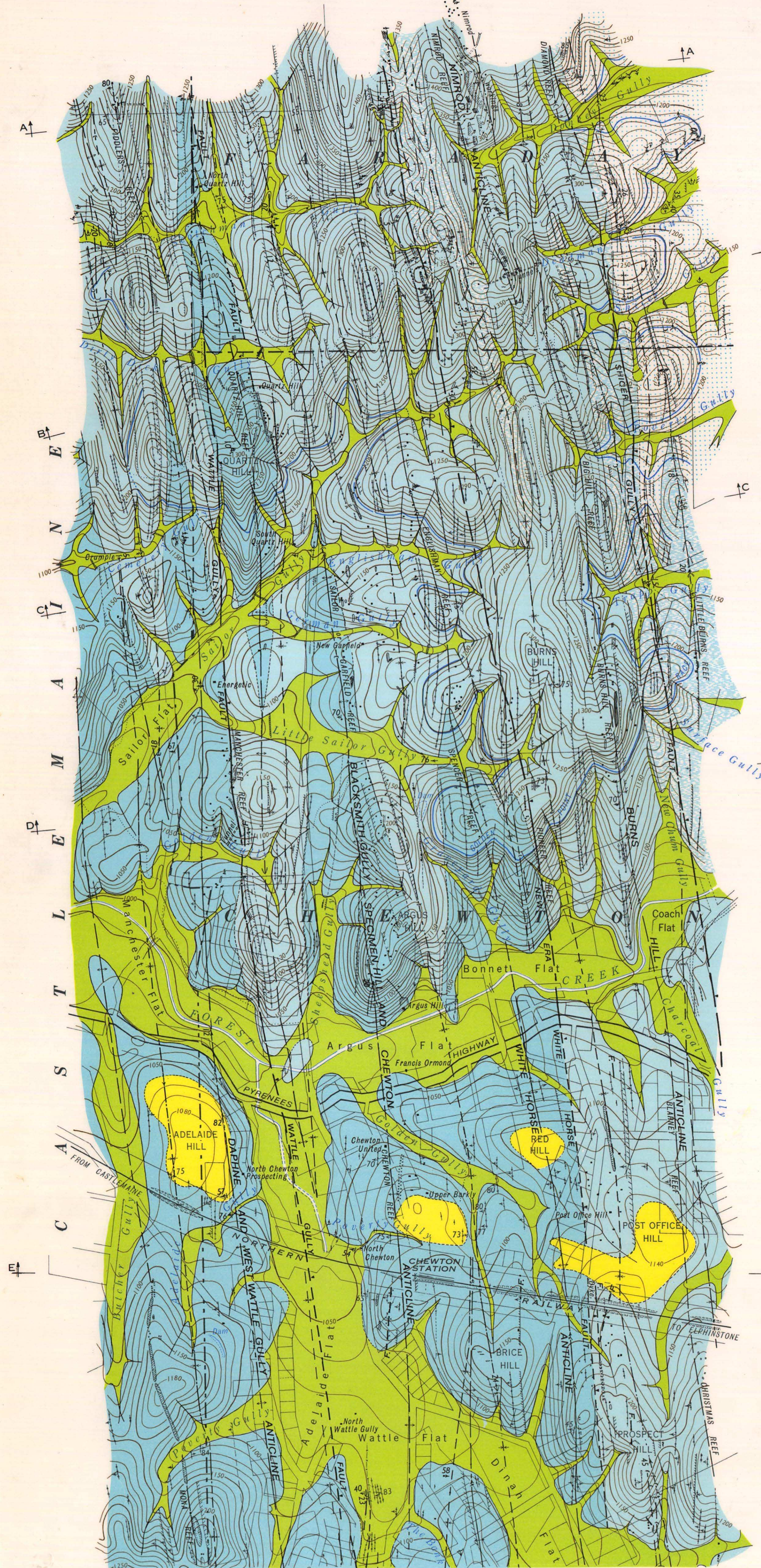
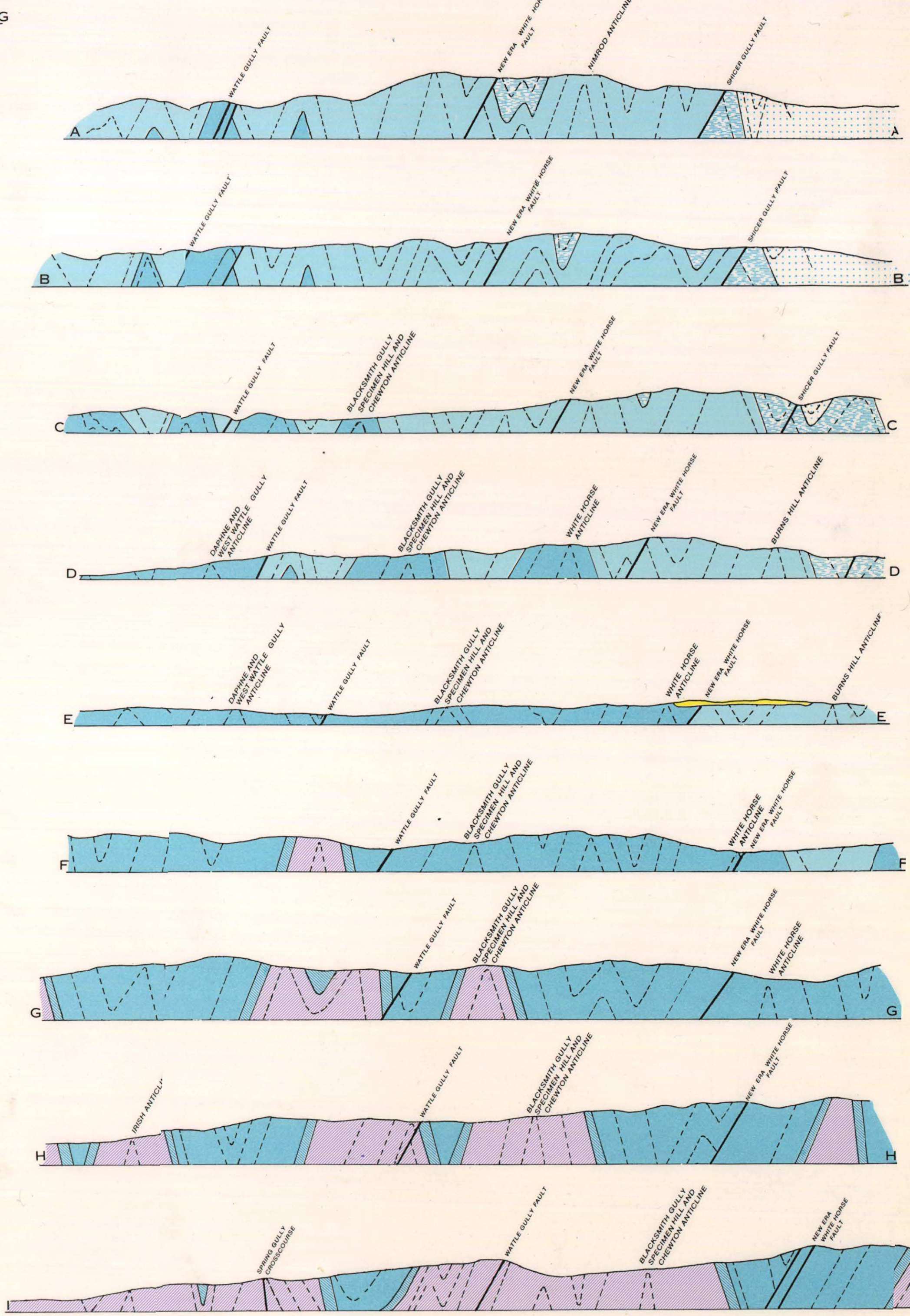
Geologically and topographically surveyed by D E Thomas, B.Sc., in 1942 assisted by J B Munnery, B.C.E., R G Whiting, B.M.E., and D R Dickson, B.Sc. Drawn for reproduction in the Department of Mines, Melbourne, Victoria, by B M Crowe, J.S.I.C., under the direction of D W McInnes, M.A.I.C., Chief Geophysicist, D.S.C., Chief Government Geologist.

Issued by R G Whiting, B.M.E., Secretary for Mines, under the authority of the Hon J C M Balfour, M.L.A., Minister of Mines.

F D Atkinson, Government Printer, 1977

NOTE: This map, although surveyed in 1942 and drawn in 1957, has not previously been published in colour.

- Dip and strike
- Anticlinal axial line
- Anticlinal axial line, position approximate
- Synclinal axial line
- Synclinal axial line, position approximate
- Foot of sub-fold
- Dike
- Fault with dip
- Fault, position approximate
- Fault inferred, probable
- Quartz on surface
- Fossil band, with dip
- Sandstone band, with dip
- Shalt, with dip
- Adit
- Open cut
- Mallock dump
- Sand heap
- Tract
- Dam
- Contours



For continuation, see Southern Portion