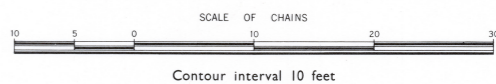


CHEWTON GOLDFIELD

PARISHES OF CASTLEMAINE, CHEWTON, FARADAY AND FRYERS

For continuation, see Northern Portion



Recent	Alluvium	
Tertiary	Gravel	
Lower Ordovician	Cs 3	Castlemainian
	Cs 2	
	Cs 1	Chewtonian
	Cs 0	
	Bs 4	
	Bs 3	Bendigoian

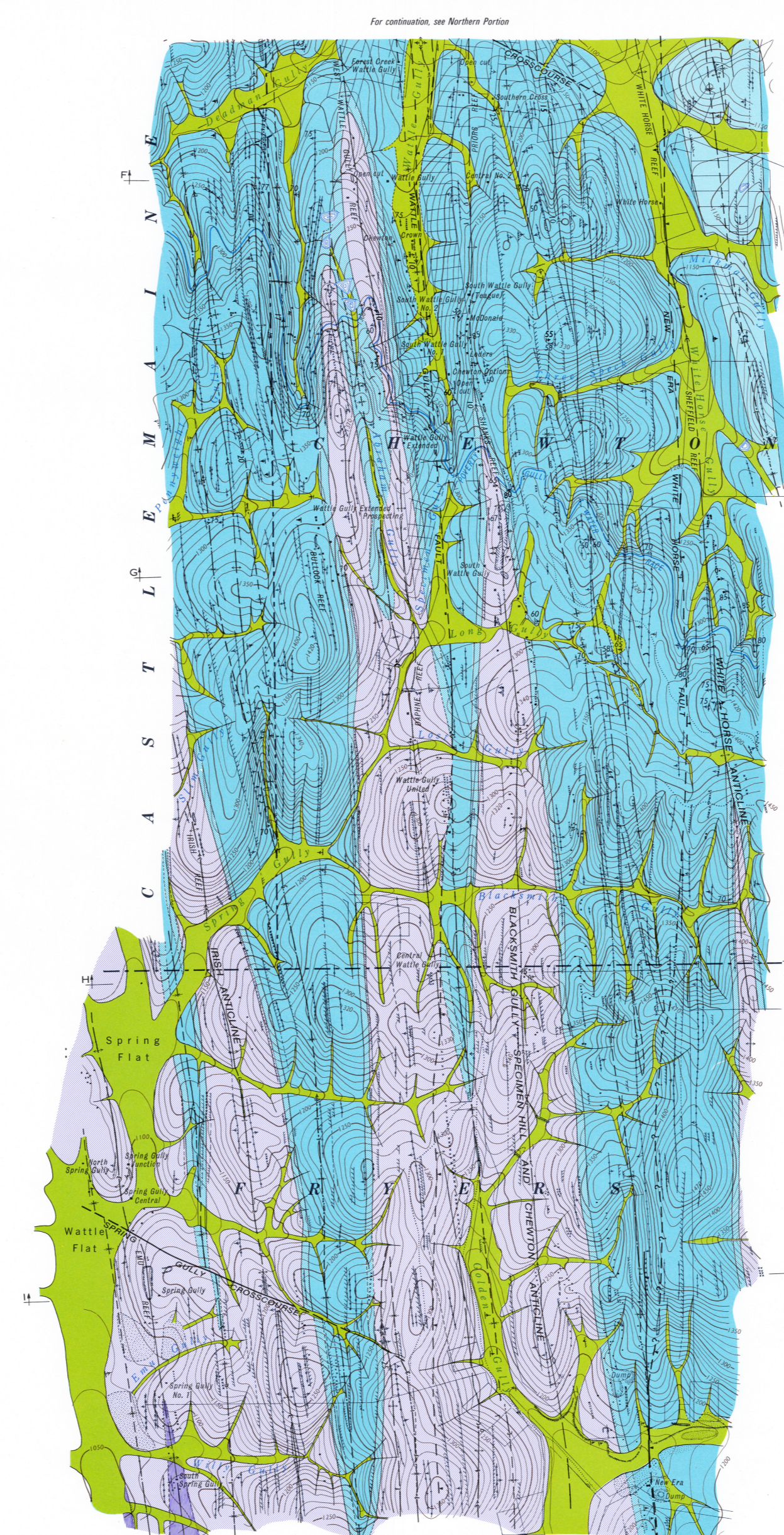
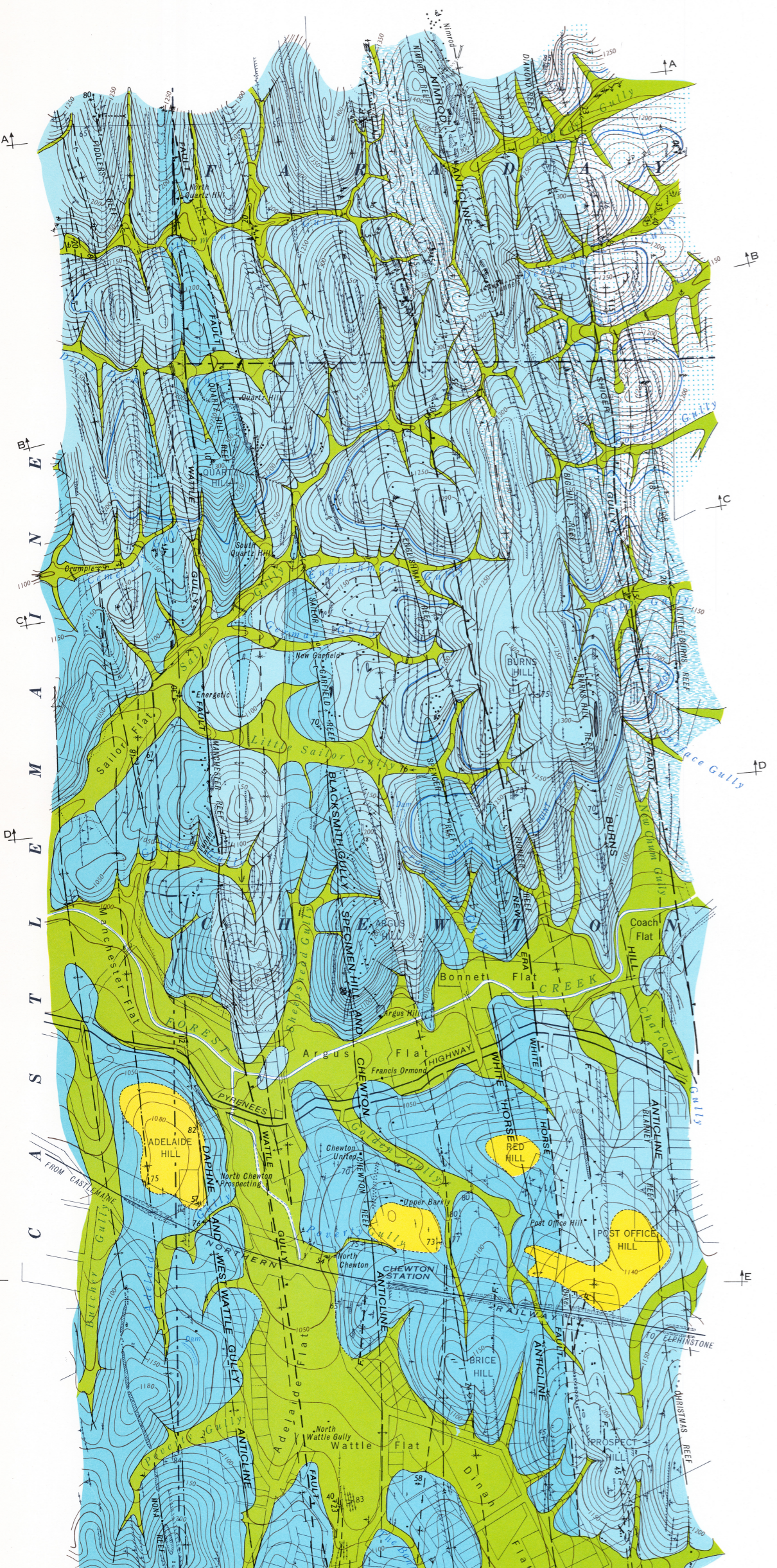
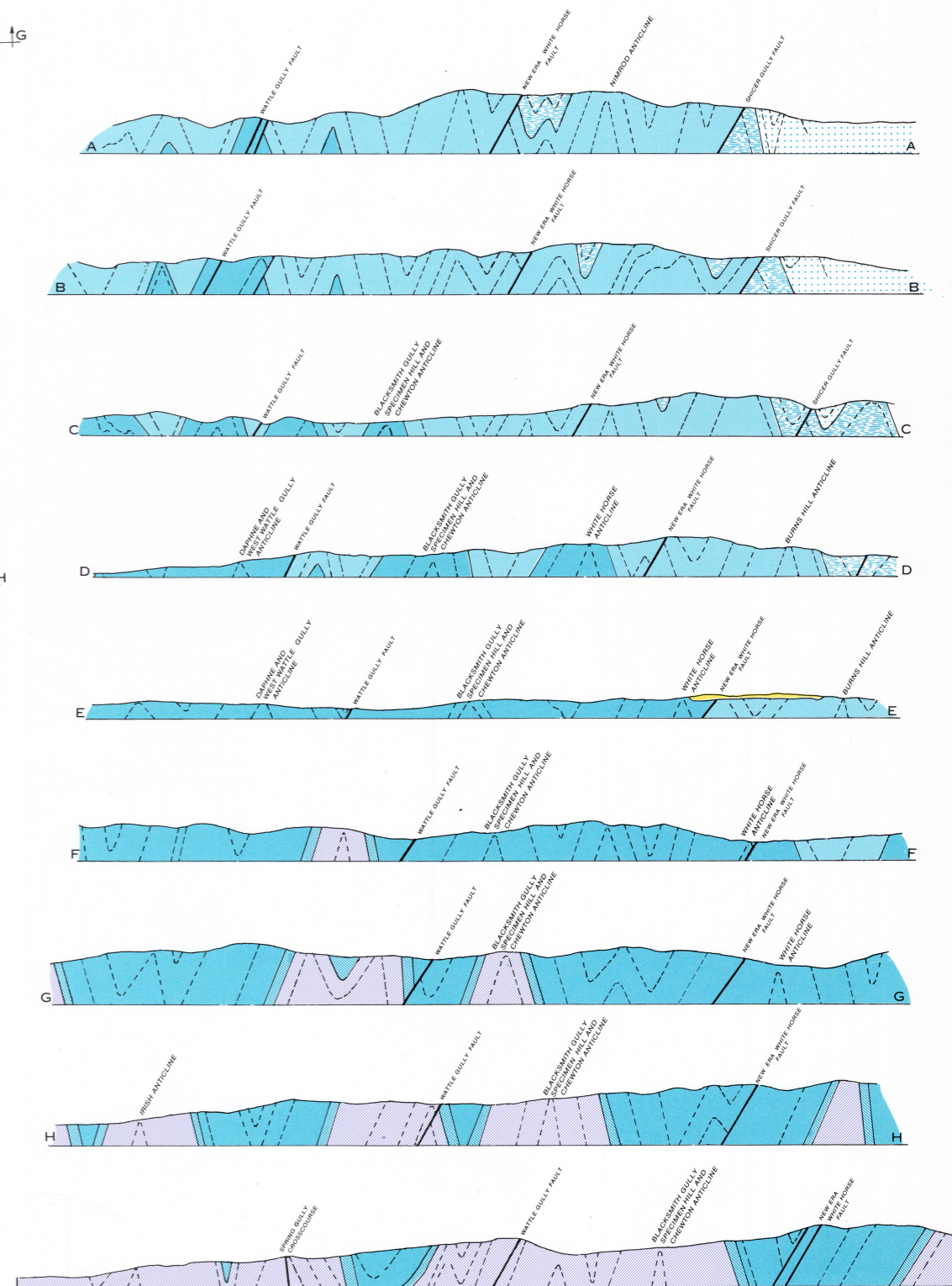


Geologically and topographically surveyed by D. E. Thomas, B.Sc., in 1942, assisted by J. B. Murray, B.Sc., R. D. Whiting, B.M.E., and D. R. Dickson, B.Sc. Drawn for reproduction in the Department of Mines, Melbourne, Victoria, by B. M. Crowley, J.A.I.C., under the direction of G. W. McInnes, M.A.I.C., Chief Draughtsman, 1957.
D. E. Thomas, D.Sc., Chief Government Geologist
Issued by R. G. Whiting, B.M.E., Secretary for Mines, under the authority of the Hon. J. C. McCallum, M.L.A., Minister of Mines.
F. D. Atkinson, Government Printer, 1957.

NOTE: This map, although surveyed in 1942 and drawn in 1957, has not previously been published in colour.

	Dip and strike		Fault with dip		Shalt with dip
	Anticline axial line		Fault, position approximate		Adit
	Anticline axial line, position approximate		Fault inferred, probable		Open cut
	Syncline axial line		Quartz on surface		Mollock dump
	Syncline axial line, position approximate		Dike		Sand heap
	Pitch of sub-feld		Fossil bed, with dip		Track
	Dane		Sandstone band, with dip		Dun
					Contours

Note: Alluvial gold workings are not shown.



For continuation, see Southern Portion