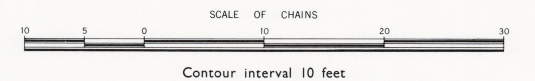


# CHEWTON GOLDFIELD

## PARISHES OF CASTLEMAINE, CHEWTON, FARADAY AND FRYERS

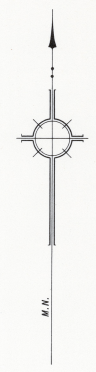
For continuation, see Northern Portion



Geology and topography surveyed by D E Thomas, B.Sc., in 1942, assisted by B Mowery, B.Sc., R G Whiting B.M.S. and D H Dickson, B.Sc. Drawn for reproduction in the Department of Mines, Melbourne, Victoria, by B M Cowley, J.R.C., under the direction of D W Atkinson, M.A.I.C., Chief Draughtsman 1957.  
D E Thomas, D.Sc., Chief Government Geologist  
Issued by R G Whiting, B.M.S., Secretary for Mines, under the authority of the Hon J C W Ballour, M.L.A., Minister of Mines.  
© D Atkinson Government Printer, 1957

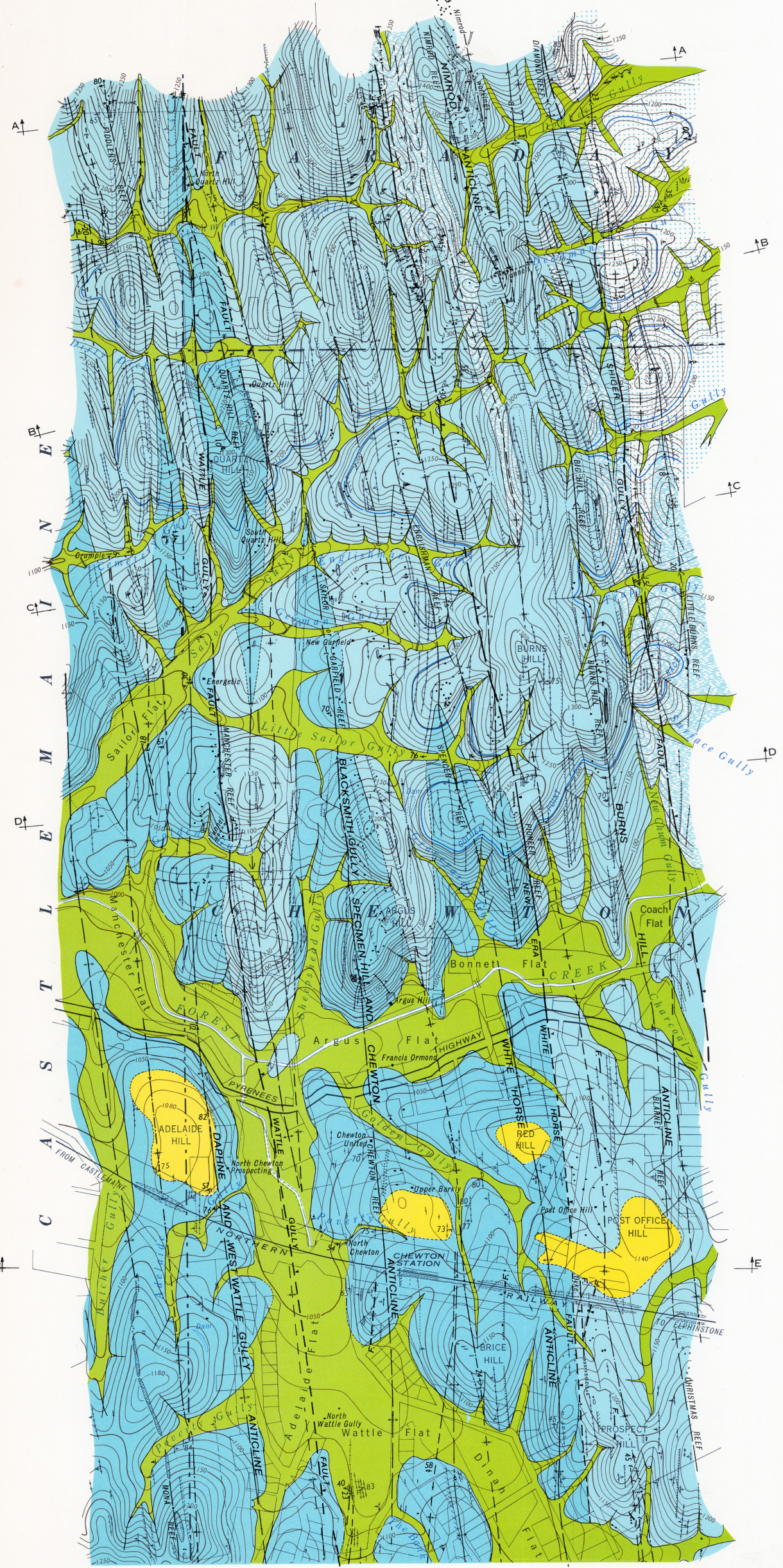
NOTE: This map, although surveyed in 1942 and drawn in 1957, has not previously been published in colour.

Recent	Alluvium
Tertiary	Gravels
Lower Ordovician	Ca 3
	Ca 2
	Ca 1
Chertonian	Cb 2
	Cb 1
	Cb 3
	Bendigoian



Dip and strike	Fault with dip	Shaft, with dip
Anticlinal axial line	Fault, position approximate	Add
Anticlinal axial line, position approximate	Fault inferred, probable	Open cut
Synclinal axial line	Quartz on surface	Mullock dump
Synclinal axial line, position approximate	Dyke	Sand heap
Pitch of sub-hill	Fossil band, with dip	Track
Dome	Sandstone band, with dip	Dam
		Contours

Note: Alluvial gold workings are not shown.



For continuation, see Southern Portion

