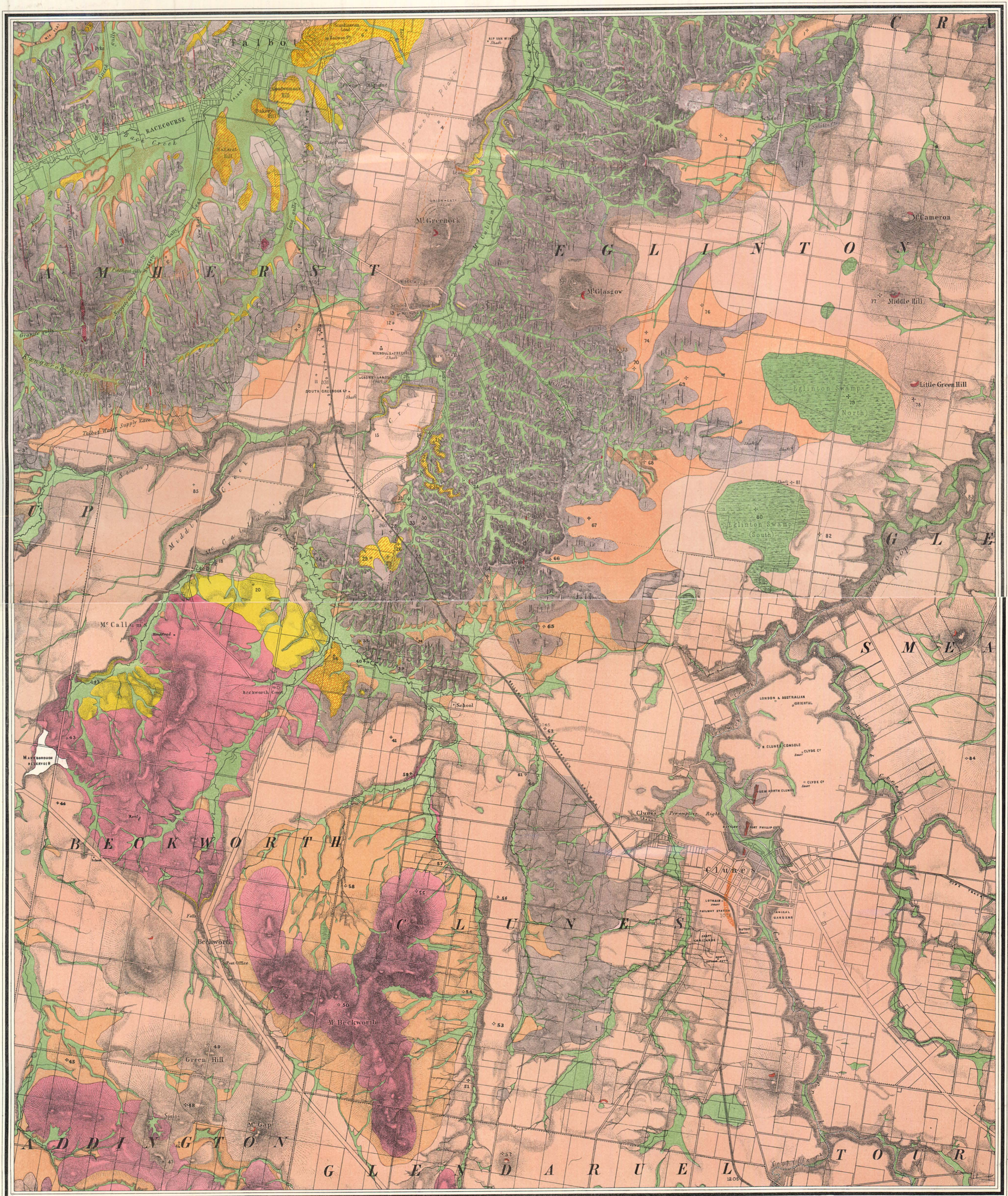


CLUNES M<sup>c</sup>GREENOCK AND TALBOT GOLD FIELDS.



CARALUZ

IGIE

NGOWER

TON

ELLO

Geologically and Topographically surveyed by Norman Taylor and R. A. F. Murray under the direction of The Secretary for Mines and Water Supply, and Chief Mining Surveyor for the Colony of Victoria.

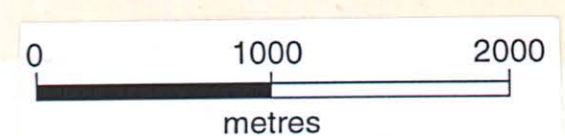
Lithographed by R. Shepherd, Printed by J. Finnis, Mining Department Melbourne 1883.

SCALE 40 CHAINS TO AN INCH

- Alluvial (Thin coverage)
- Post-Pliocene (Thin coverage)
- Newer Volcanic
- Upper Pliocene (Thin coverage)
- Lower Pliocene
- Lower Silurian
- Granite
- Trappean
- Gold Workings

The greater portion of the Newer Volcanic area as well as the Northern & Eastern boundaries of the Granite formation are covered with thin deposits of Post-Pliocene Clays, Gravel, Pisolitic Iron, Cement &c. subsequent to the Newer Volcanic

Outcrops of Quartz reefs / Quartz reefs proved auriferous / Strike and dip of rocks / Points of volcanic eruption / Note references + 10 ft. Heights above sea level in feet 1076. Parish boundary.....



GF23