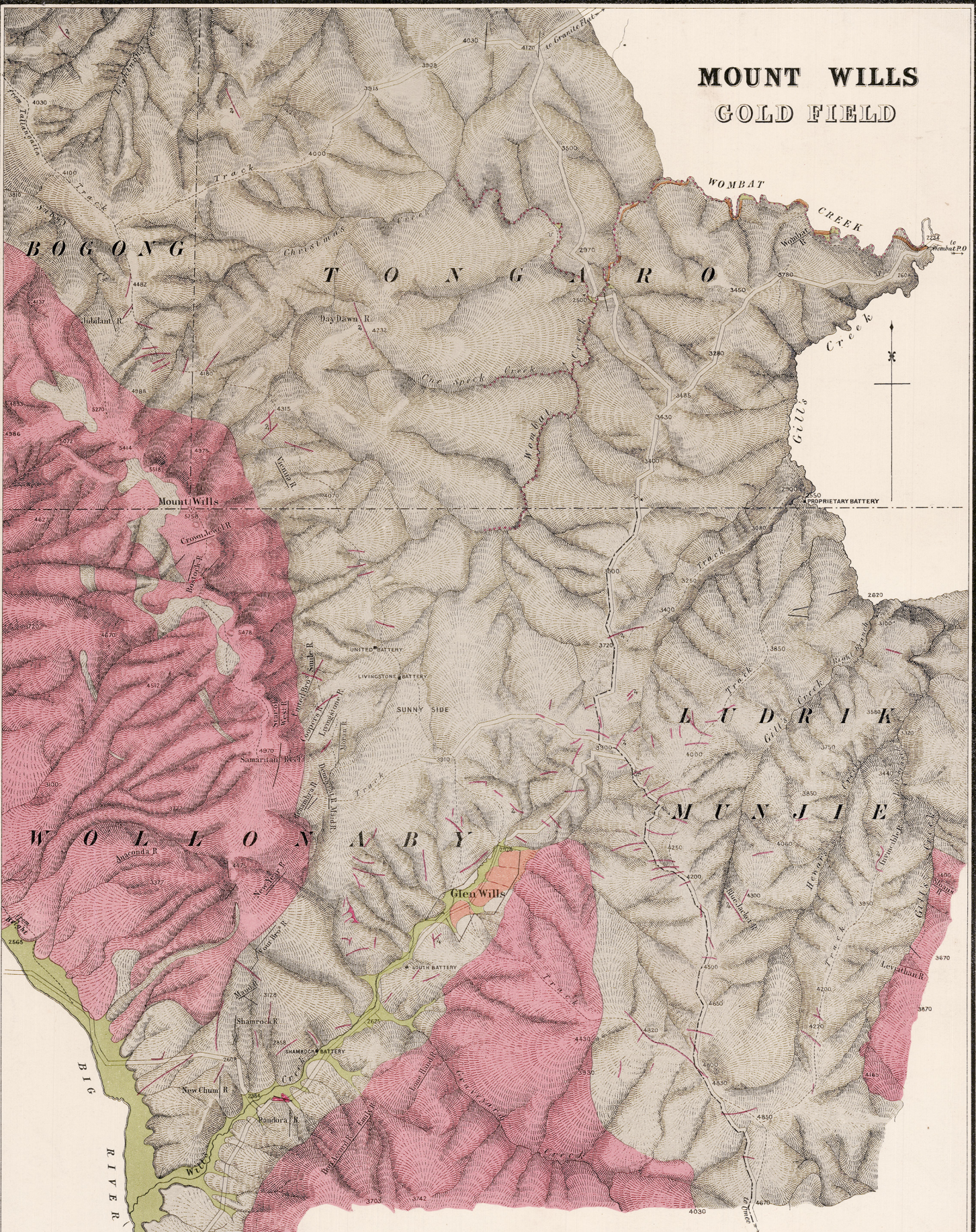


MOUNT WILLS GOLD FIELD



INDEX

- | | | | |
|-------------------|--------------|------------------------|-------------------------|
| ALLUVIAL | RECENT DRIFT | METAMORPHOSED SILURIAN | GRANITE |
| | | | |
| Alluvial Workings | Dykes | Auriferous Keels | Terrace Wash |
| | | 2 in. | Dip, 25 Contorted, 4000 |

Scale, 40 Chains to an Inch.

Published under the direction of A.W. Howitt, F.G.S., Secretary for Mines, The Hon. H. Foster, Minister of Mines, July, 1885.

Surveyed by Ernest Ludwig, Assst. Field Geologist, under the supervision of E.A.E. Murray, F.G.S., Government Geologist.

Tricks by C. G. Jones