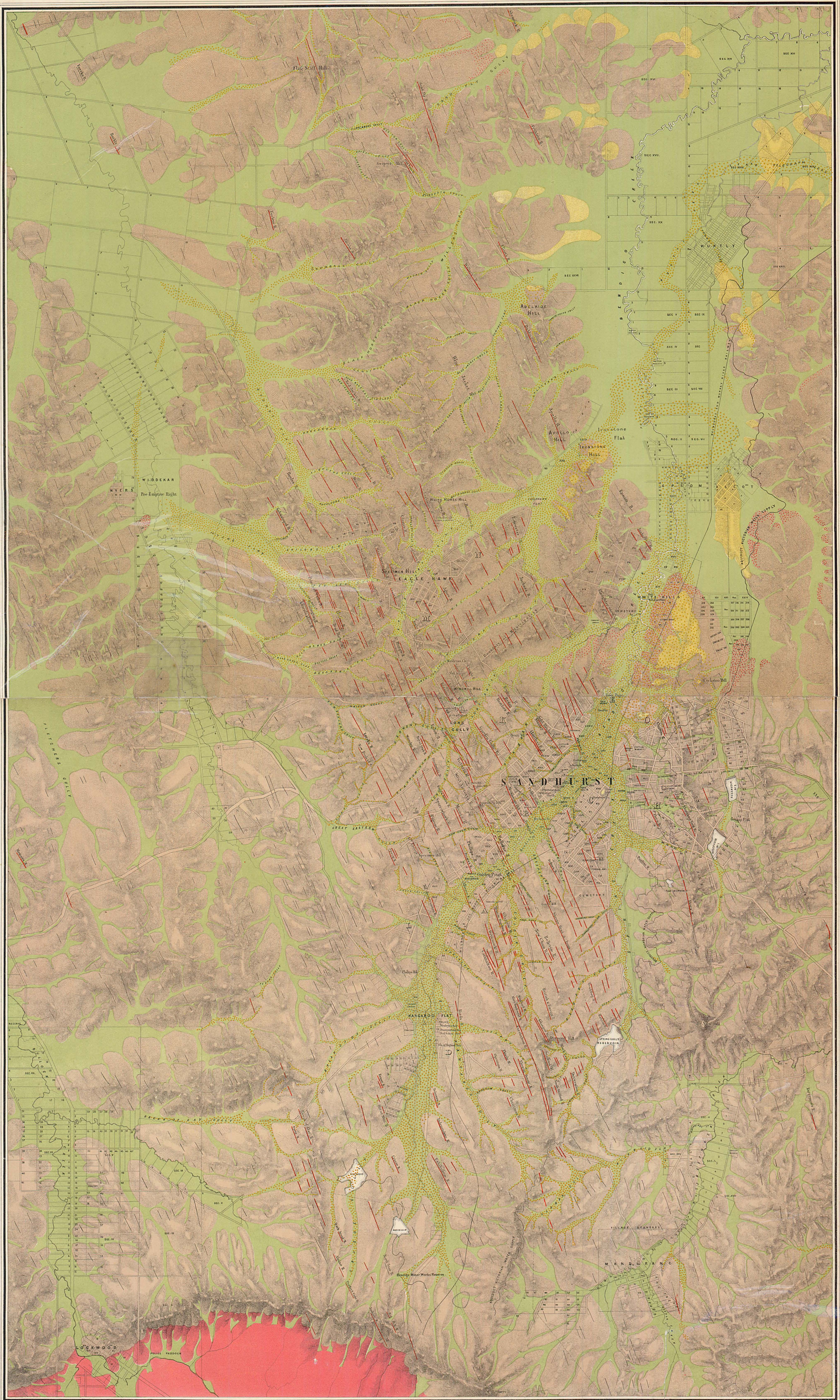


SANDHURST GOLD FIELD.



Surveyed and compiled under the direction of E. Bragg, South F.S. and Assoc. Inst. C.B. Secretary for Mines and the Colonial Chief Mining Surveyor, The Honorable Angus Mackay M.P. Minister of Mines, additions made to the Survey and the map subsequently altered under the same direction by Eng. A. F. Harvey April 1873.

SCALE 40 CHAINS TO AN INCH.

- | | | | |
|----------------|--|----------------|--|
| Post Pliocene | <i>Clay, gravel, &c., occupying gullies and flats.</i> | Newer Pliocene | <i>Gravel, clay, &c., on slopes and extremities of spurs, deposited during denudation of Older Pliocene.</i> |
| Older Pliocene | <i>Gravel and coarsest of White Hills and Hasty deep loam.</i> | Lower Silurian | Granite |
| | Gold workings. | | <i>Quartz reefs where proved or inferred.</i> |

