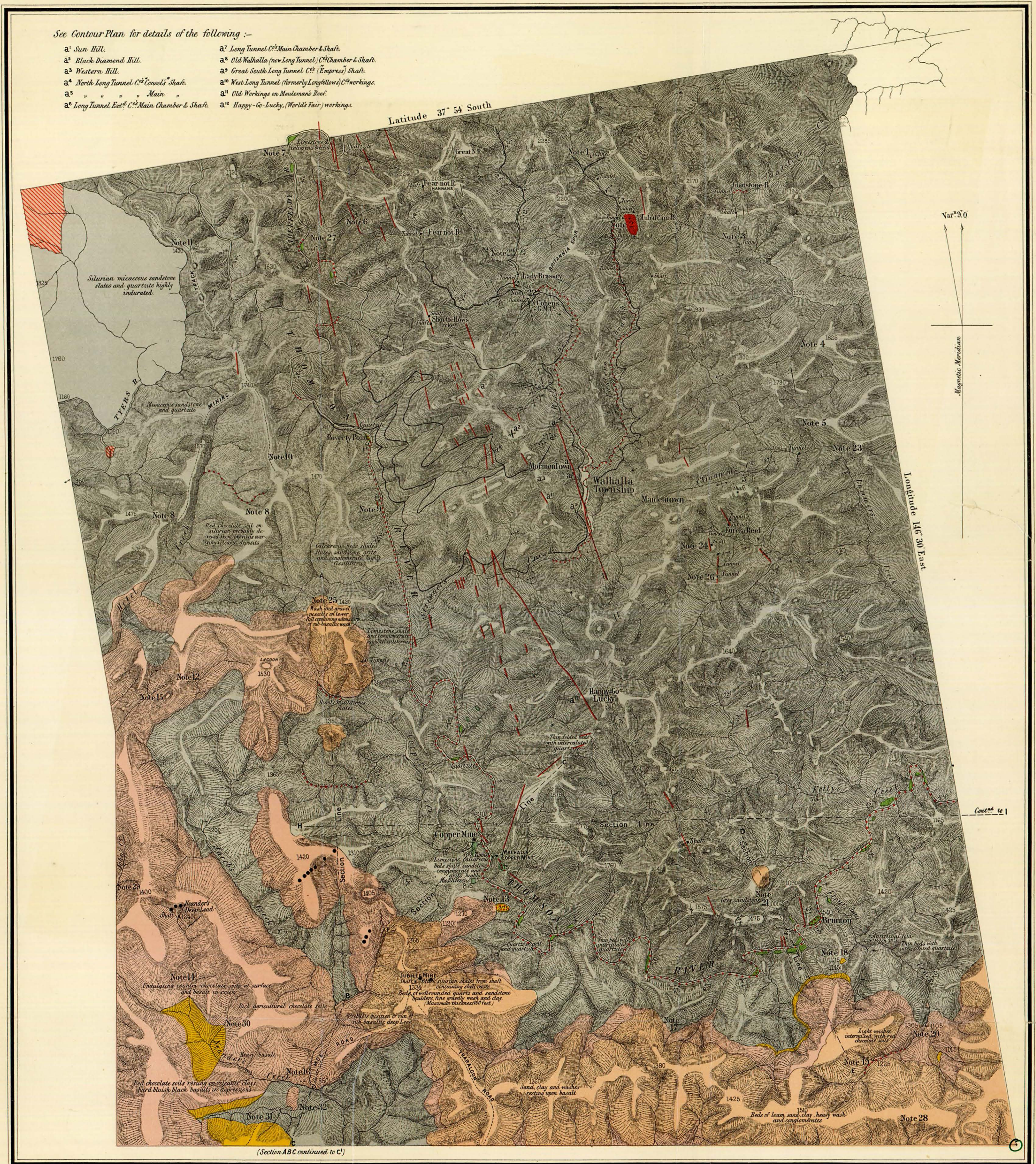


# Geological and Topographical Plan OF WALHALLA GOLD FIELD AND SURROUNDING COUNTRY

See Contour Plan for details of the following :-

- a<sup>1</sup> Sun Hill.
- a<sup>2</sup> Black Diamond Hill.
- a<sup>3</sup> Western Hill.
- a<sup>4</sup> North Long Tunnel C<sup>2</sup> Consols' Shaft.
- a<sup>5</sup> " " " Main " "
- a<sup>6</sup> Long Tunnel East C<sup>2</sup> Main Chamber & Shaft.
- a<sup>7</sup> Long Tunnel C<sup>2</sup> Main Chamber & Shaft.
- a<sup>8</sup> Old Walhalla (new Long Tunnel) C<sup>2</sup> Chamber & Shaft.
- a<sup>9</sup> Great South Long Tunnel C<sup>2</sup> (Empress) Shaft.
- a<sup>10</sup> West Long Tunnel (formerly Longfellow's) C<sup>2</sup> workings.
- a<sup>11</sup> Old Workings on Moutlemans Reef.
- a<sup>12</sup> Happy-go-Lucky, (World's Fair) workings.



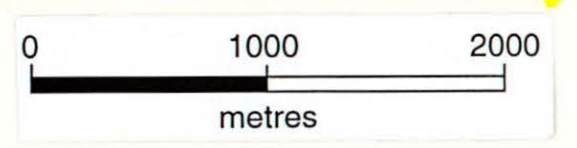
Surveyed by O.A.L. Whitelaw, under the supervision of H. Lerman, B.C.E., F.G.S., Acting Gov<sup>r</sup> Geologist, 1901.

Lithographed by C. Cover.

- Recent
- Pleistocene
- ?Pliocene
- Volcanic (?Eocene)
- ?Eocene
- Upper Silurian
- Quartz-Mica-Diorite. (Lower Devonian).

Scale, Two Inches to a Mile.

- Bore.
- Reef.
- Dyke.
- Synclinal Fold.
- Anticlinal Fold.
- Dip and Strike.
- Alluvial Gold.
- 1300 Barometer Heights.
- Shaft.
- Tunnel.
- Tramway.



456097mE  
5794751mN