

GEOLOGICAL AND TOPOGRAPHICAL PLAN OF THE WOOD'S POINT GOLD-FIELD.

Geological Survey of Victoria, Memoirs, No 3.

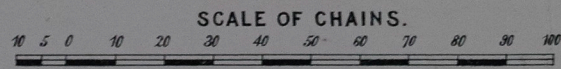
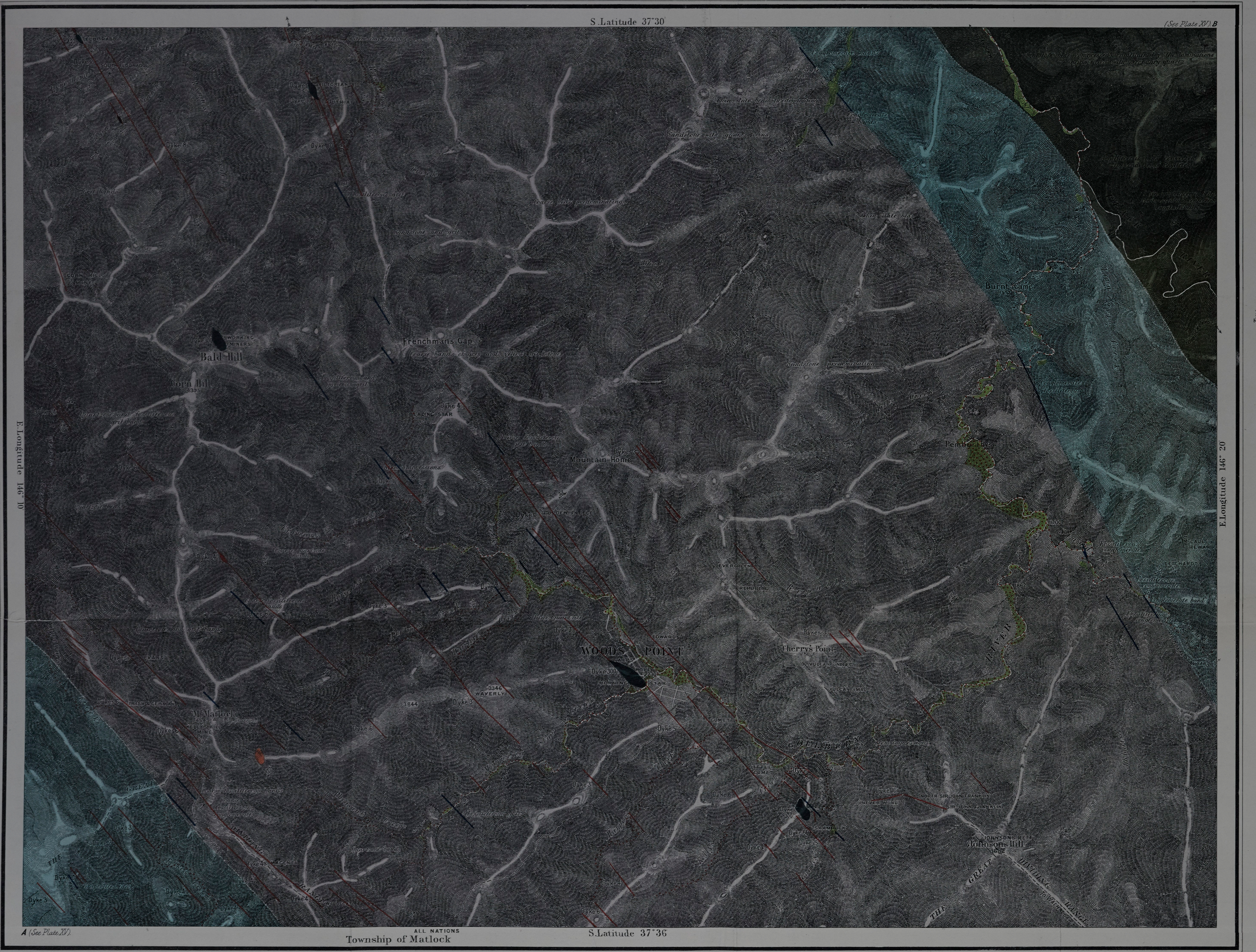


PLATE No XIV.



Surveyed by O.A.L. Whitelaw, under the supervision of Professor J.W. Gregory, F.R.S., D.Sc., Director of Geological Survey, May, 1902.

Lithographed by C. Glover.

