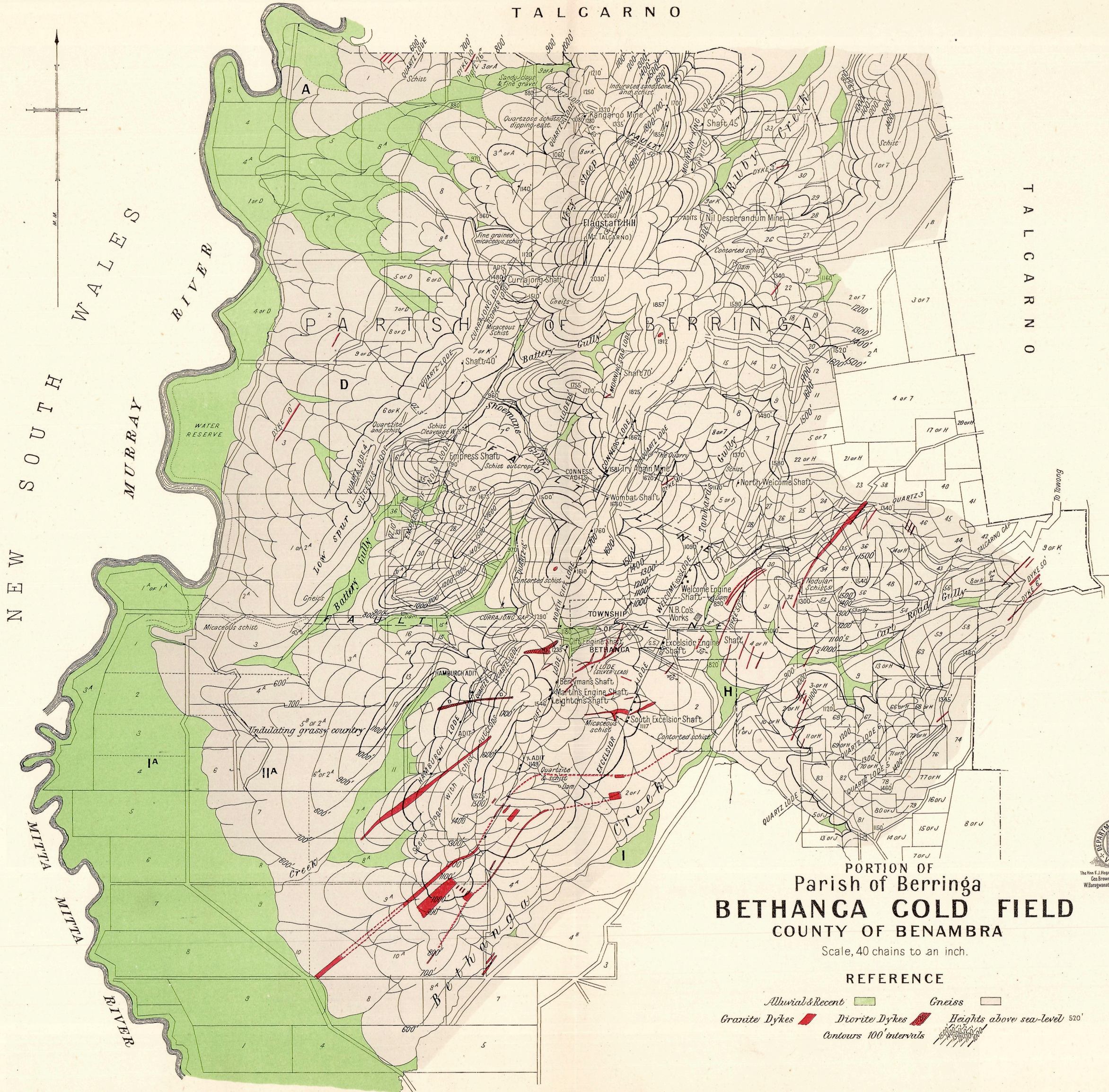


TALCARNO



PORTION OF
Parish of Berringa
BETHANGA GOLD FIELD
COUNTY OF BENAMBRA

Scale, 40 chains to an inch.

REFERENCE

- Alluvial & Recent
- Granite Dykes
- Diorite Dykes
- Gneiss
- Heights above sea-level 520'
- Contours 100' intervals

