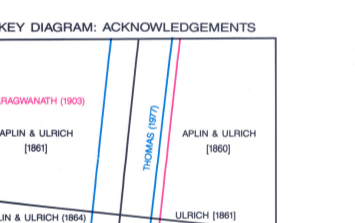




MINING COMPANY

Alma	1
Alma	2
Alma	3
Alma	4
Alma	5
Alma	6
Alma	7
Alma	8
Alma	9
Alma	10
Alma	11
Alma	12
Alma	13
Alma	14
Alma	15
Alma	16
Alma	17
Alma	18
Alma	19
Alma	20
Alma	21
Alma	22
Alma	23
Alma	24
Alma	25
Alma	26
Alma	27
Alma	28
Alma	29
Alma	30
Alma	31
Alma	32
Alma	33
Alma	34
Alma	35
Alma	36
Alma	37
Alma	38
Alma	39
Alma	40
Alma	41
Alma	42
Alma	43
Alma	44
Alma	45
Alma	46
Alma	47
Alma	48
Alma	49
Alma	50

- LOCALITIES OF INTEREST
- 1 The 'Archeological Field' - a south-south-eastern extension of the main goldfield.
 - 2 Castlemaine Grandditch - original tunneling and boring largely destroyed by rising groundwater.
 - 3 Castlemaine Supergroup - exposed by alluvial mining, showing both bedding-controlled veins and faults.
 - 4 Major fault associated with the Quartz Hill open cut.
 - 5 Point Castlemaine Supergroup sandstone package.
 - 6 North Hill - a large mine shaft.



RESPONSIBILITIES AND ACKNOWLEDGEMENTS

Geology and compilation: C.E. Wilton, 1993-1995 & 1992-1993

Administrative: C.E. Wilton, 1993-1995 & 1992-1993

Published mapping: Aplin, C.D.H. & Lurich, G. (1985). Quarter sheet 10 000/23. 1 mile to two inches geological map. Geological Survey of Victoria.

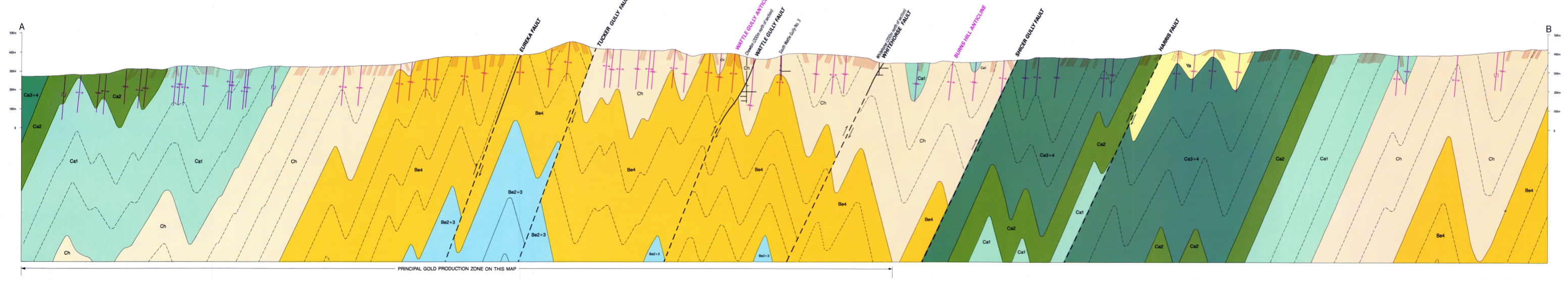
Unpublished mapping: C.E. Wilton, 1993-1995 & 1992-1993

Cartography: S. Hall (1995)

The base map is Crown Copyright and is reproduced by permission of the Department of Finance and Consumer and Natural Resources.

Published by the Department of Agriculture, Energy & Minerals

Reproduction without permission is forbidden



STRATIGRAPHIC LEGEND

PERIOD	EPOCH	STAGE	Marine	Non-marine	Intrusive												
QUATERNARY	RECENT	PLEISTOCENE	Alluvial	Cul	Cul												
						FLUOCENE	Cul	Cul									
									Cul	Cul							
TERTIARY	MIOCENE	OLIGOCENE	Ths	Ths	Ths												
						Eocene	Ths	Ths									
									Palaeocene	Ths	Ths						
												Ths	Ths				
JURASSIC	UPPER	Nonconformity	Nonconformity	Nonconformity	Nonconformity												
						Nonconformity	Nonconformity	Nonconformity									
DEVONIAN	UPPER	Nonconformity	Nonconformity	Nonconformity	Dgh												
						Nonconformity	Nonconformity	Nonconformity									
OROVICAN	LOWER	Cambrian	Cul	Cul	Cul												
						Castlemaine Supergroup	Cul	Cul									
									Castlemaine Zone 1	Cul	Cul						
												Castlemaine Zone 2	Cul	Cul			
															Castlemaine Zone 3	Cul	Cul
Castlemaine Zone 5	Cul	Cul															
			Castlemaine Zone 6	Cul	Cul												
Castlemaine Zone 7	Cul	Cul															
			Castlemaine Zone 8	Cul	Cul												
Castlemaine Zone 9	Cul	Cul															
			Castlemaine Zone 10	Cul	Cul												

Geology

Geological boundary

Geological boundary, concealed

Bedding trend showing dip (after Thomas, 1977)

Reverse fault, triangles on upthrown side, position unaccommodated

Fault: UD indicate relative movement, upthrown position indicated

Shallowly fault, arrows indicate relative horizontal movement, position unaccommodated

Anticline, position unaccommodated

Anticline, position indicated

Syncline, position unaccommodated

Pericline, for couple merging into line of adjacent fold, position unaccommodated

Minor possible beds, indicative of a fold fringe

Stratigraphic plunging direction

Bedding orientation, individual

Bedding orientation with plunging distribution

Bedding orientation with plunging of S.W. lineation

Change orientation, individual

Quartz vein

SYMBOL LEGEND

Geological boundary

Geological boundary, concealed

Bedding trend showing dip (after Thomas, 1977)

Reverse fault, triangles on upthrown side, position unaccommodated

Fault: UD indicate relative movement, upthrown position indicated

Shallowly fault, arrows indicate relative horizontal movement, position unaccommodated

Anticline, position unaccommodated

Anticline, position indicated

Syncline, position unaccommodated

Pericline, for couple merging into line of adjacent fold, position unaccommodated

Minor possible beds, indicative of a fold fringe

Stratigraphic plunging direction

Bedding orientation, individual

Bedding orientation with plunging distribution

Bedding orientation with plunging of S.W. lineation

Change orientation, individual

Quartz vein

TOPOGRAPHY

Road, street, road reserve

Vehicle track

Railway line

State Forest boundary

Parish boundary

Parish name

River, stream

Water channel, drain

Dam

Water race

Mullock heap

Mine tailings heap (battery 'sands')

Underground mine workings (section only)

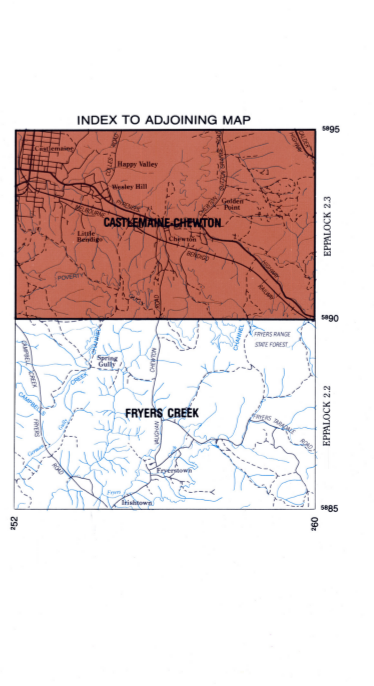
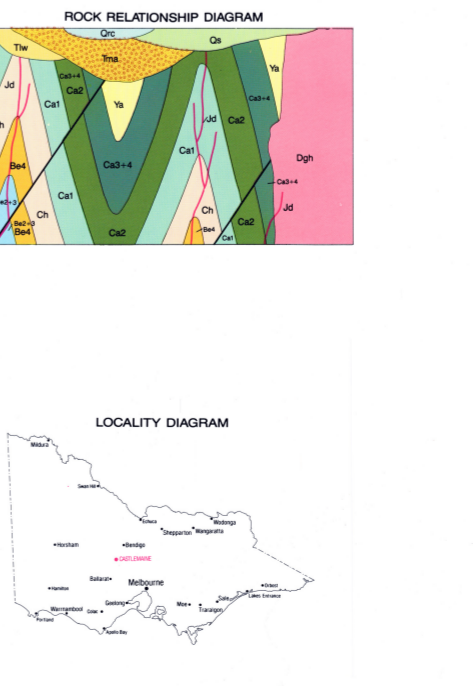
Alluvial diggings, operator named where known

Excursion locality number

Bedding line (section only)

Approximate limit of contact metamorphism

Hornfels, spotted site and quartzite



SECTION SCALE

Horizontal Scale: 1:10 000

Vertical Scale: 1:10 000

GEOLOGICAL SURVEY OF VICTORIA
1:10 000 Geological Map Series
CASTLEMAINE GOLDFIELD
CASTLEMAINE-CHEWTON
EPPALOCK 10 000/23

Department of Agriculture, Energy & Minerals
Government of Victoria