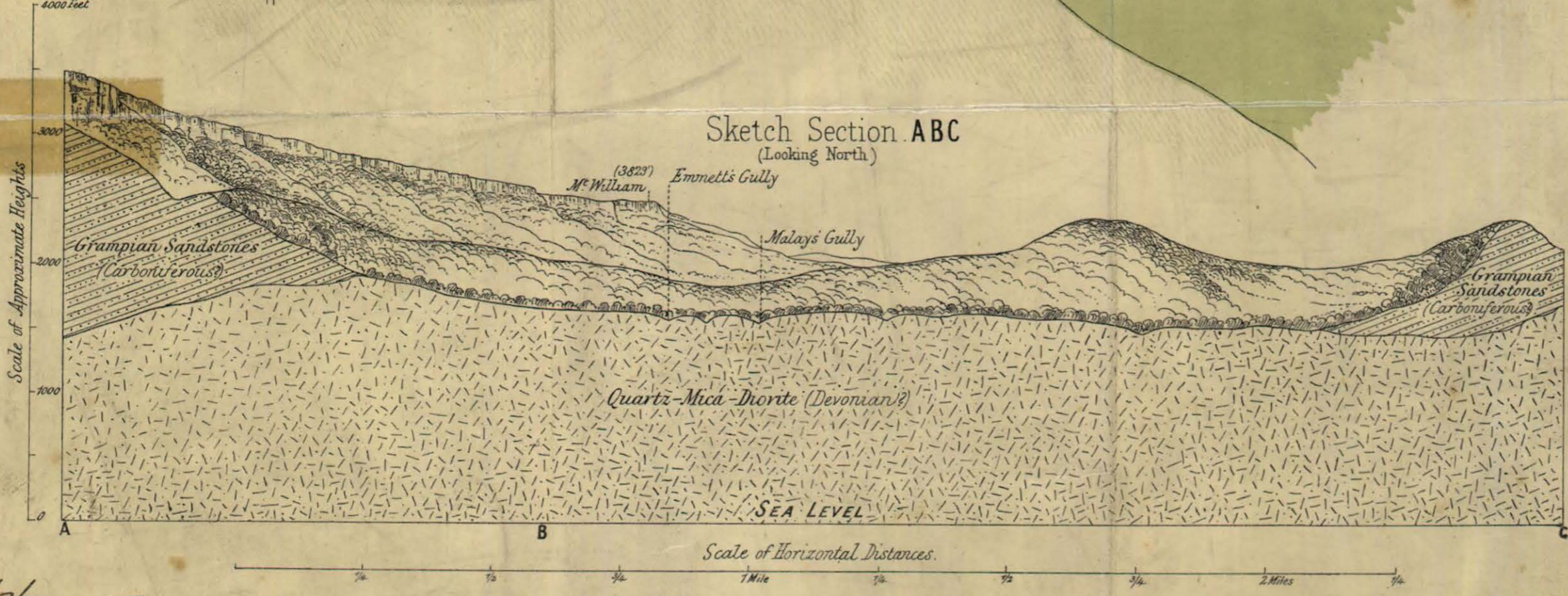


# Sketch Plan M<sup>t</sup> WILLIAM GOLD FIELD

Scale, 20 Chains to the Inch.

## REFERENCE

- Quartz-Mica-Diorite (Devonian?)
- Grampian Sandstones (Carboniferous)
- Upper Pliocene & Recent
- Alluvial Gold Workings, 2100 Approx. Heights (above Sea Level.)



*H. Hermann  
Acting Geologist  
8/9/00*

