

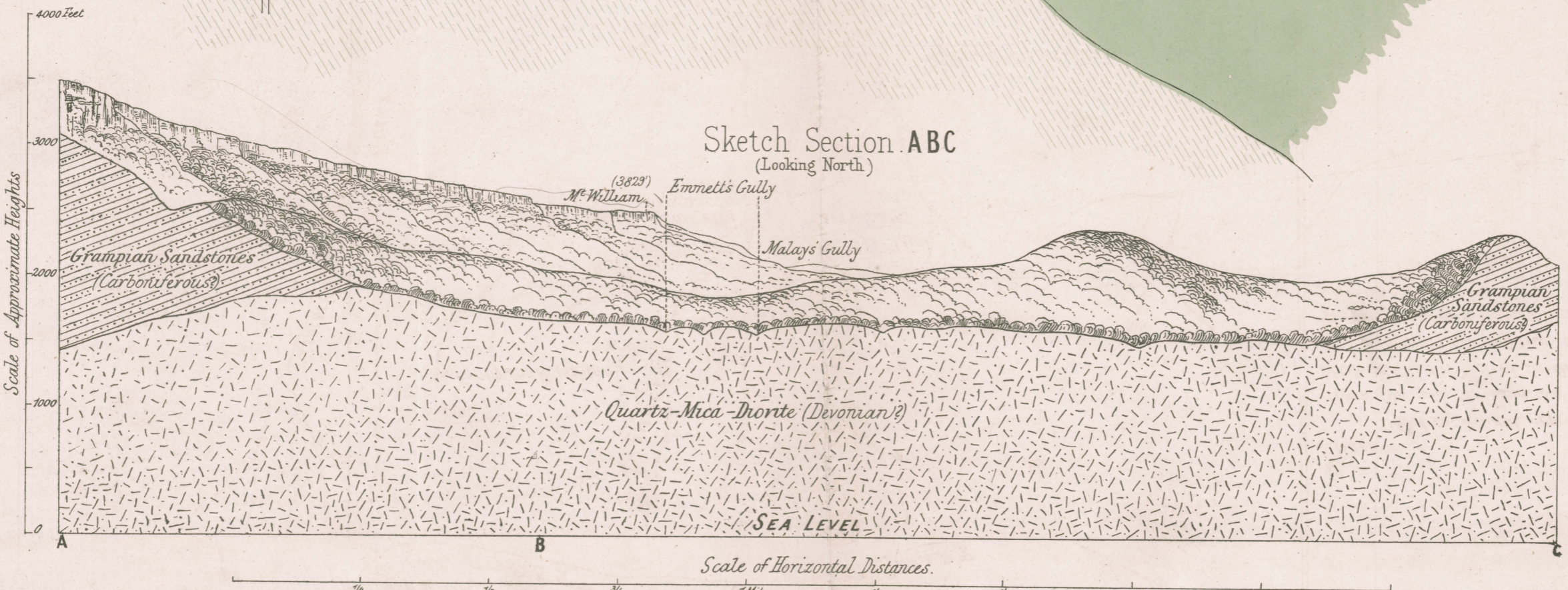
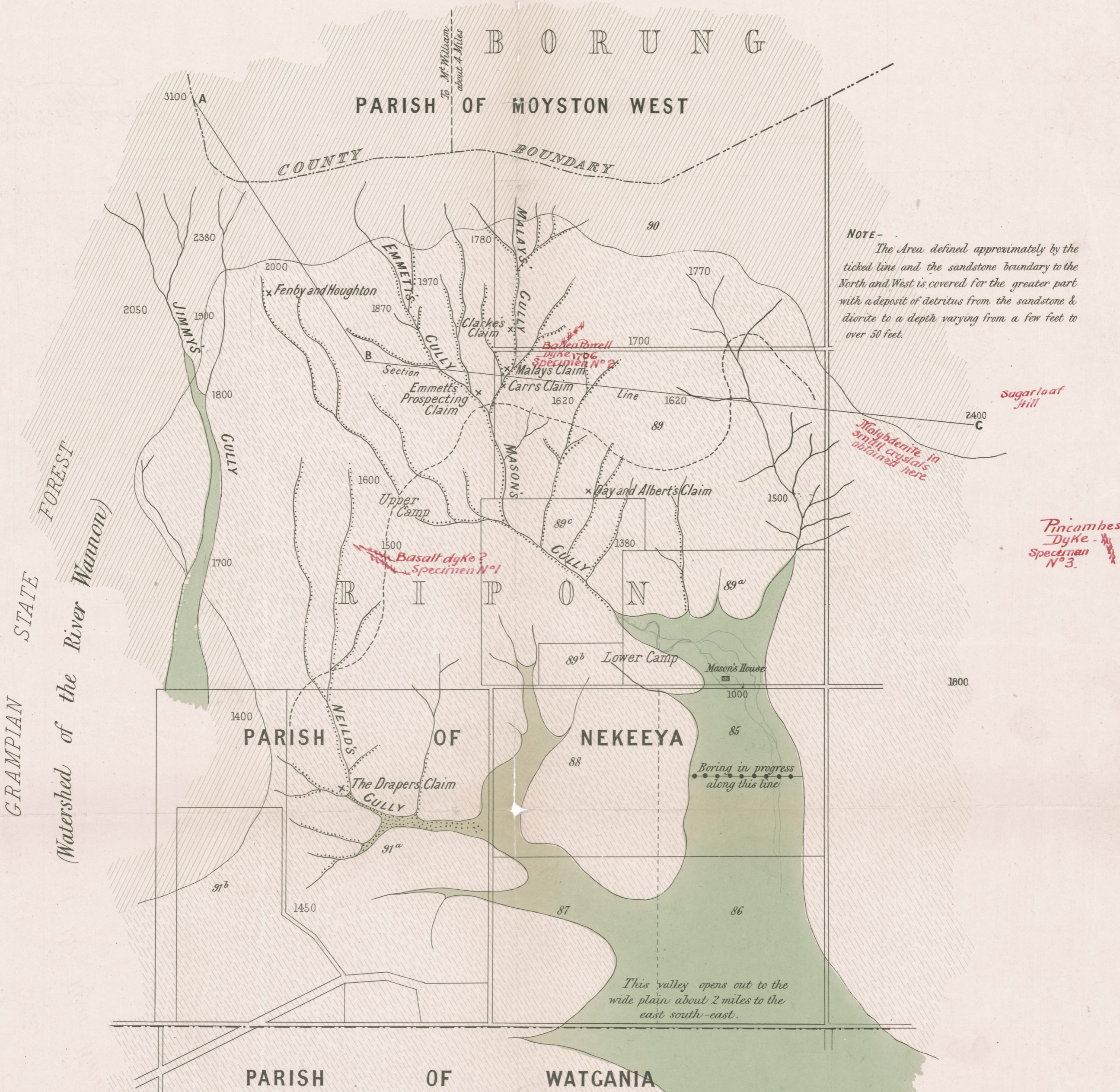
Sketch Plan

Mt. WILLIAM GOLD FIELD

Scale, 200 Feet to the Inch.

REFERENCE

- Quartz-Mica-Diorite (Devonian?)
- Grampian Sandstones (Carboniferous?)
- Upper Pliocene & Recent
- Alluvial Gold Workings, 2100 Approx. Heights (above Sea Level.)



*H. Herman
Acting Exp. Geologist
8/19/00*