

REFERENCE.

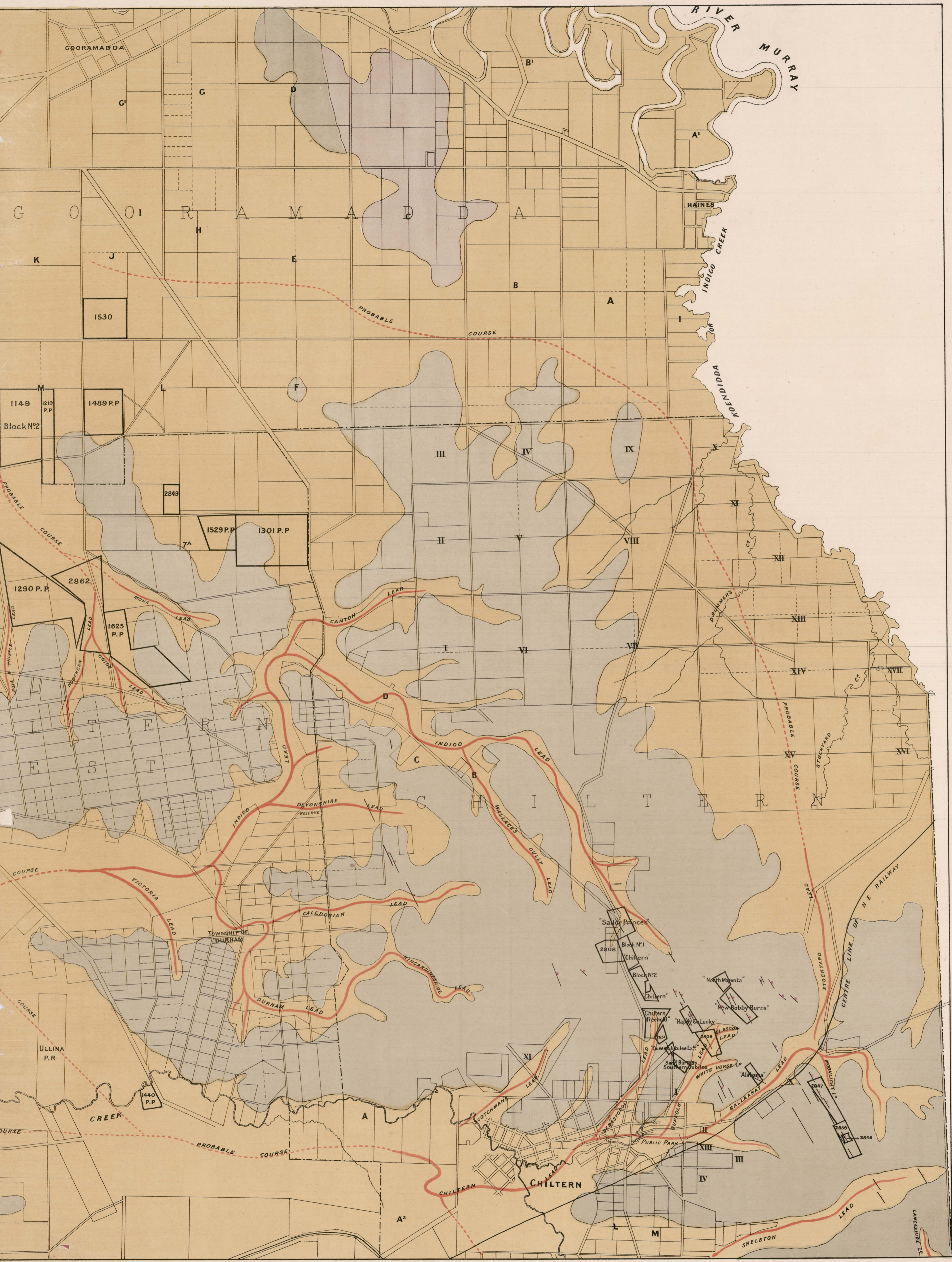
- Alluvial - - - - - [light green box]
- Tertiary - - - - - [yellow box]
- Glacial Conglomerate - - - - - [brown box]
- Lower Silurian - - - - - [grey box]
- Metamorphic - - - - - [dark grey box]
- Leads - - - - - [red line]
- Quartz Reefs - - - - - [dashed line]
- Auriferous Quartz Reefs - - - - - [dashed line with dots]

NOTE. The Reefs North West of Chiltern are not yet laid down.

GEOLOGICAL SKETCH MAP

CHILTERN AND RUTHERGLEN GOLD FIELDS.

SCALE, 40 CHAINS TO ONE INCH.



COORAMADDA

RIVER MURRAY

G O O I R A M A D D A

HAINES

INDIGO CREEK

1530

PROBABLE COURSE

1149 1219 P.P. 1489 P.P. Block N°2

2849

1529 P.P. 1301 P.P.

1290 P.P. 2862

1625 P.P.

CANTON LEAD

L T E R N E S T

INDIGO LEAD

DEVONSHIRE LEAD

INDIGO LEAD

WALLACE'S GULLY LEAD

VICTORIA LEAD

CALEDONIAN LEAD

TOWNSHIP OF DURHAM

DURHAM LEAD

KINCARDINESHIRE LEAD

ULLINA P.R.

1440 P.P.

CREEK

PROBABLE COURSE

"Savior Princes" Block N°1

"Chiltern" Block N°2

"Chiltern"

"North Magenta"

"New Bobby Burns"

"Happy & Lucky"

"GLASGOW LEAD"

"Queens Jubilee Ext."

"Sally Burgess Southern Jubilee"

"WHITE HORSE Ld"

"Albany"

SCOTCHMAN'S LEAD

SEASTON

SUTOLF

BALLARAT LEAD

2847

2848

CHILTERN

CHILTERN

SKELETON LEAD

LANCASHIRE L.R.