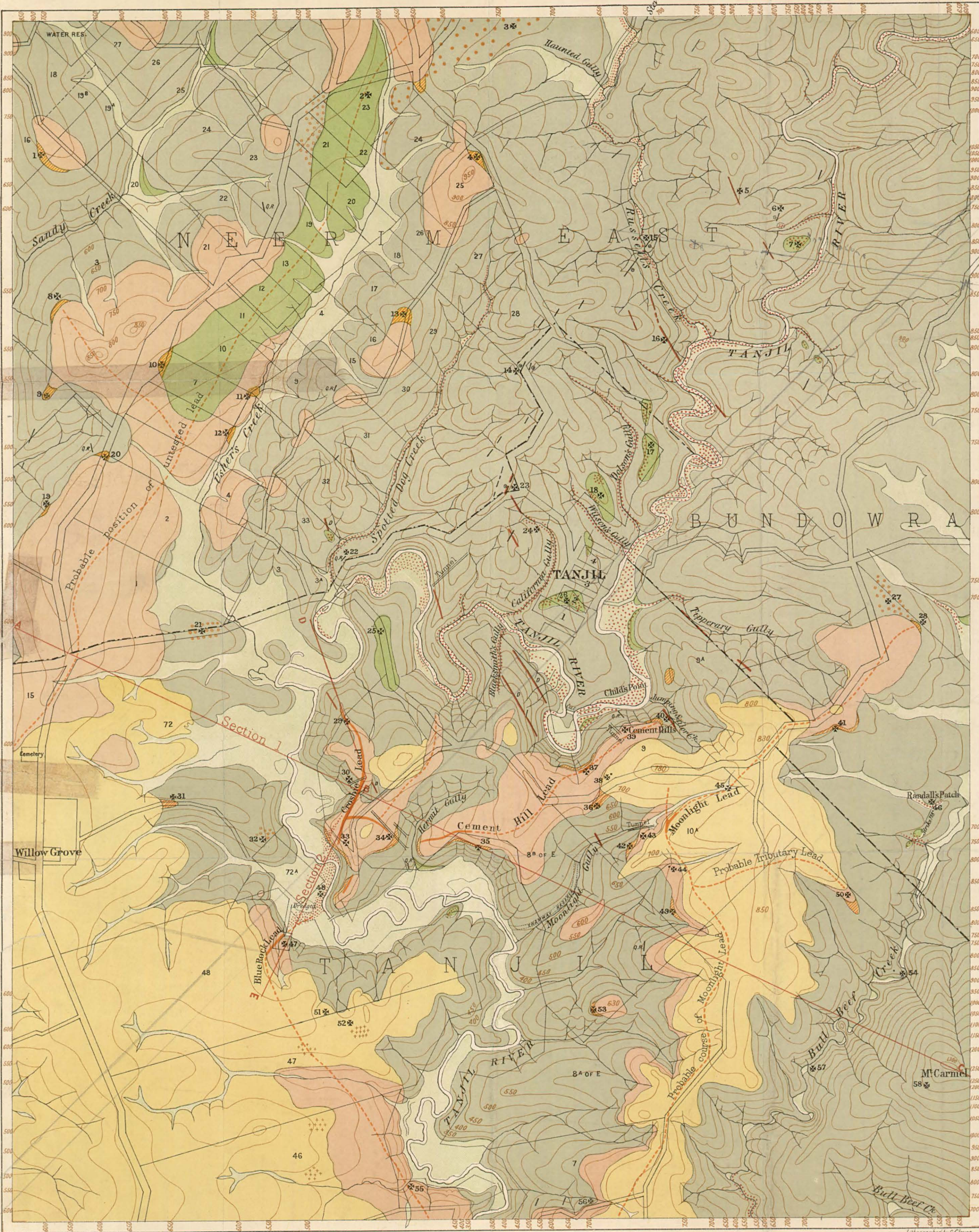


GEOLOGICAL PLAN OF TANJIL GOLDFIELD

Scale - 20 Chains to One Inch



Geologically and topographically surveyed by R.A.F. Murray, Published 1915

Lithographed by C. Glover

- Recent (Clays, sands, gravels & in river, creek & gully flats)
- Terrace Deposits (Clays, sands, gravels & on banks, points and terraces and covering older deposit)
- Upper Tertiary (Clays, sands, sand rock and gravels immediately subsequent to Older Volcanic)
- Older Volcanic (Basaltic and dense where unaltered, passing through various stages of decomposition into reddish and mottled clays)
- Lower Tertiary (Clays, sands, gravels, ferruginous conglomerate and breccia, cement, also dense hard flinty quartzite often passing into conglomerate & breccia)
- Silurian (Argillaceous sandstones, mudstones, in parts fossiliferous or slaty with occasional quartzite bands)
- Capping of Terrace Deposits, Lower Tertiary
- Dykes
- Quartz reefs
- Auriferous reefs
- Alluvial gold
- Sub basaltic auriferous leads (worked)
- Quartz gravel
- Contour lines (approximate only)
- References to notes in Report

GEOLOGICAL SURVEY DEPARTMENT OF MINES VICTORIA

GF T2

