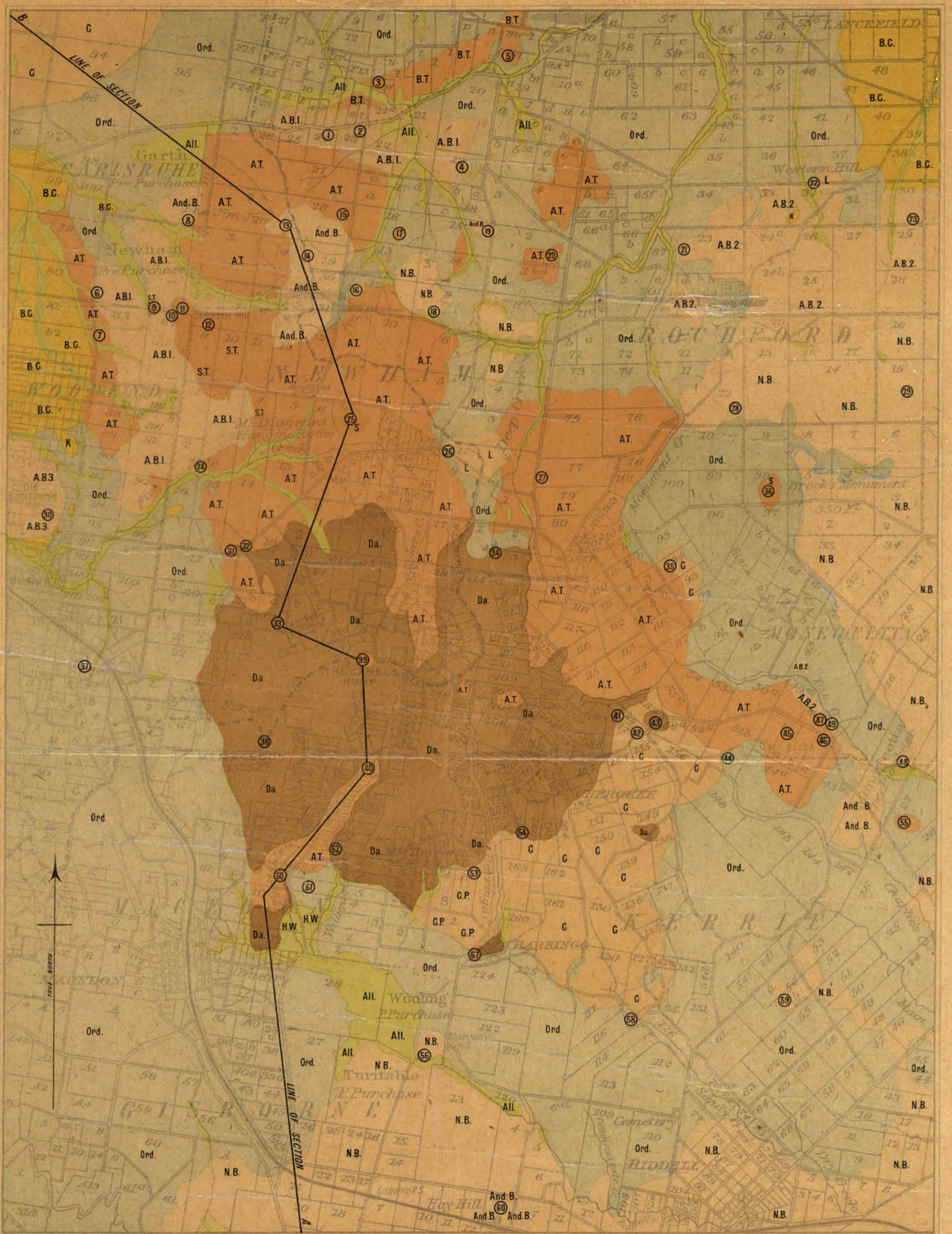


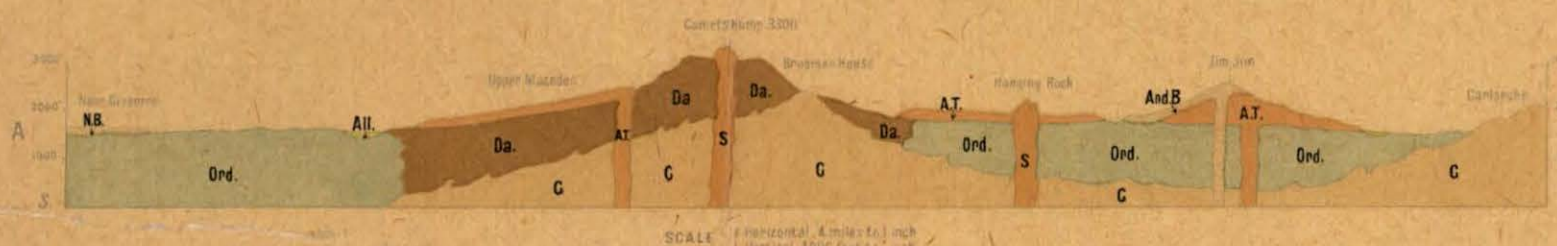
GEOLOGICAL MAP OF THE MACEDON DISTRICT

SCALE 1 Mile to 1 inch



Geologically surveyed by Professor E.W. Skene, D.S. F.G.S. and W.S. Lunn, M.S.C.

SECTION A B FROM S. TO N. THROUGH MT MACEDON



SCALE 1 Horizontal 4 miles to 1 inch
1 Vertical 4000 feet to 1 inch

REFERENCE

Ail. Alluvium	H.W. Hill Wash	K Kainozoic Grits and Quartzites	Ord. Ordovician Slates, Sandstones, and Conglomerates	B.C. Buckshot Gravel	And. B. Andesitic Basalt	N.B. Normal Basalt	L Limburgite	A.B.3. Woodendite
A.B.2. Macdonite	A.B.1. Amphoclase Basalt	B.T. Olivine Amphoclase Trachyte	S.T. Amphoclase Olivine Trachyte	S Solvsbergite	A.T. Amphoclase Trachyte	G.P. Granodiorite Porphyry	G Granodiorite	Da Dacite

