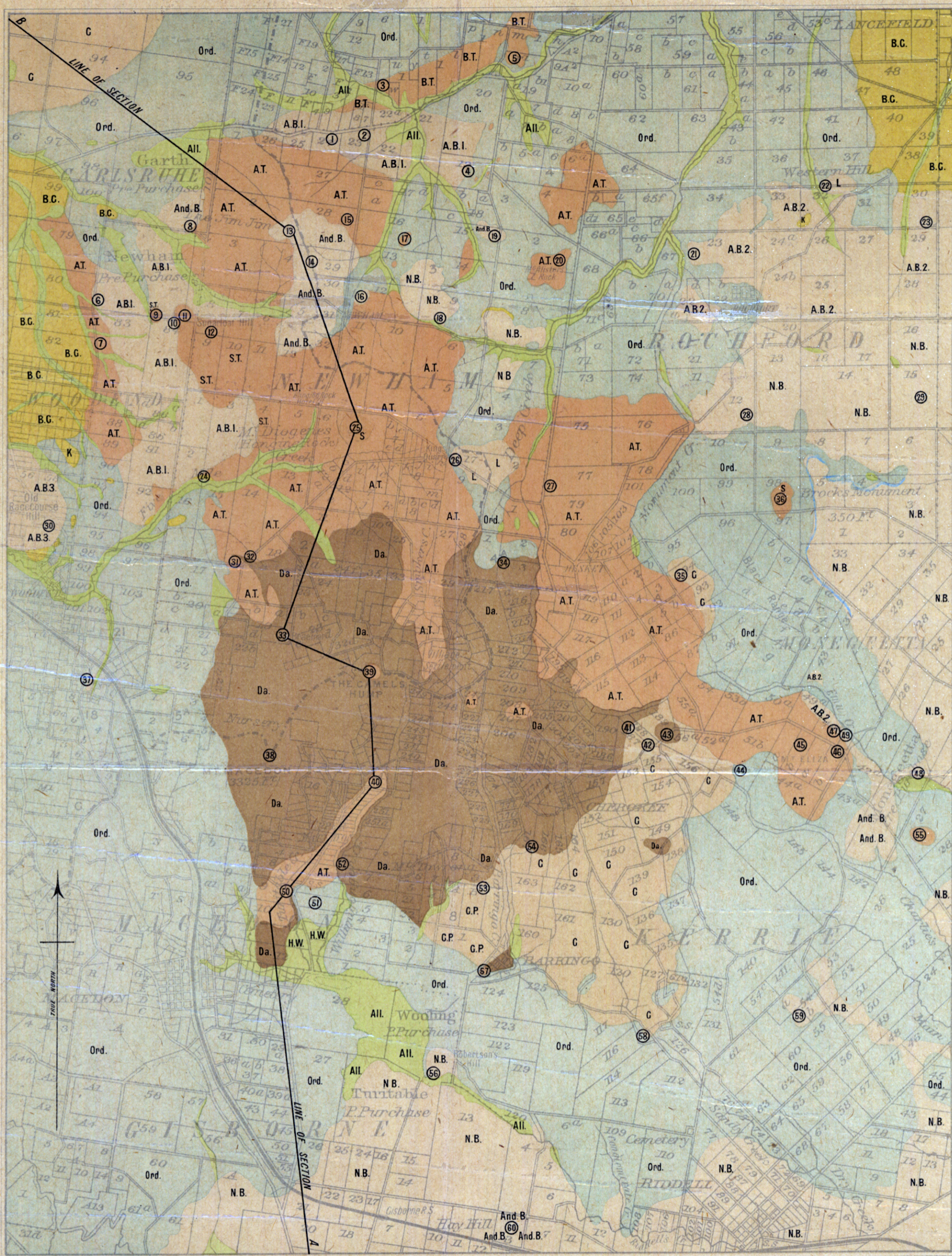


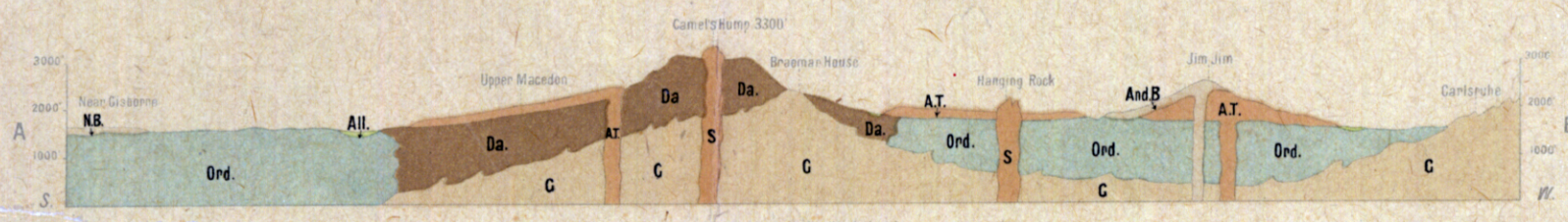
GEOLOGICAL MAP OF THE MACEDON DISTRICT

SCALE 1 Mile to 1 inch



Geologically surveyed by Professor E.W. Shears, D.Sc. F.G.S. and H.S. Summers, M.Sc.

SECTION A B FROM S. TO N. THROUGH M^t MACEDON



REFERENCE

All Alluvium	H.W. Hill Wash	K Kainozoic Grits and Quartzites	Ord. Ordovician Slatas Sandstones and Conglomerates	B.C. Buckshot Gravel	And.B. Andesitic Basalt	N.B. Normal Basalt	L Limburgite	A.B.3. Woodendite
A.B.2. Macedonite	A.B.1. Aenothoclase Basalt	B.T. Olivine Aenothoclase Trachyte	S.T. Aenothoclase Olivine Trachyte	S Solvserbergite	A.T. Aenothoclase Trachyte	C.P. Granodiorite Porphyry	G Granodiorite	Da Dacite

