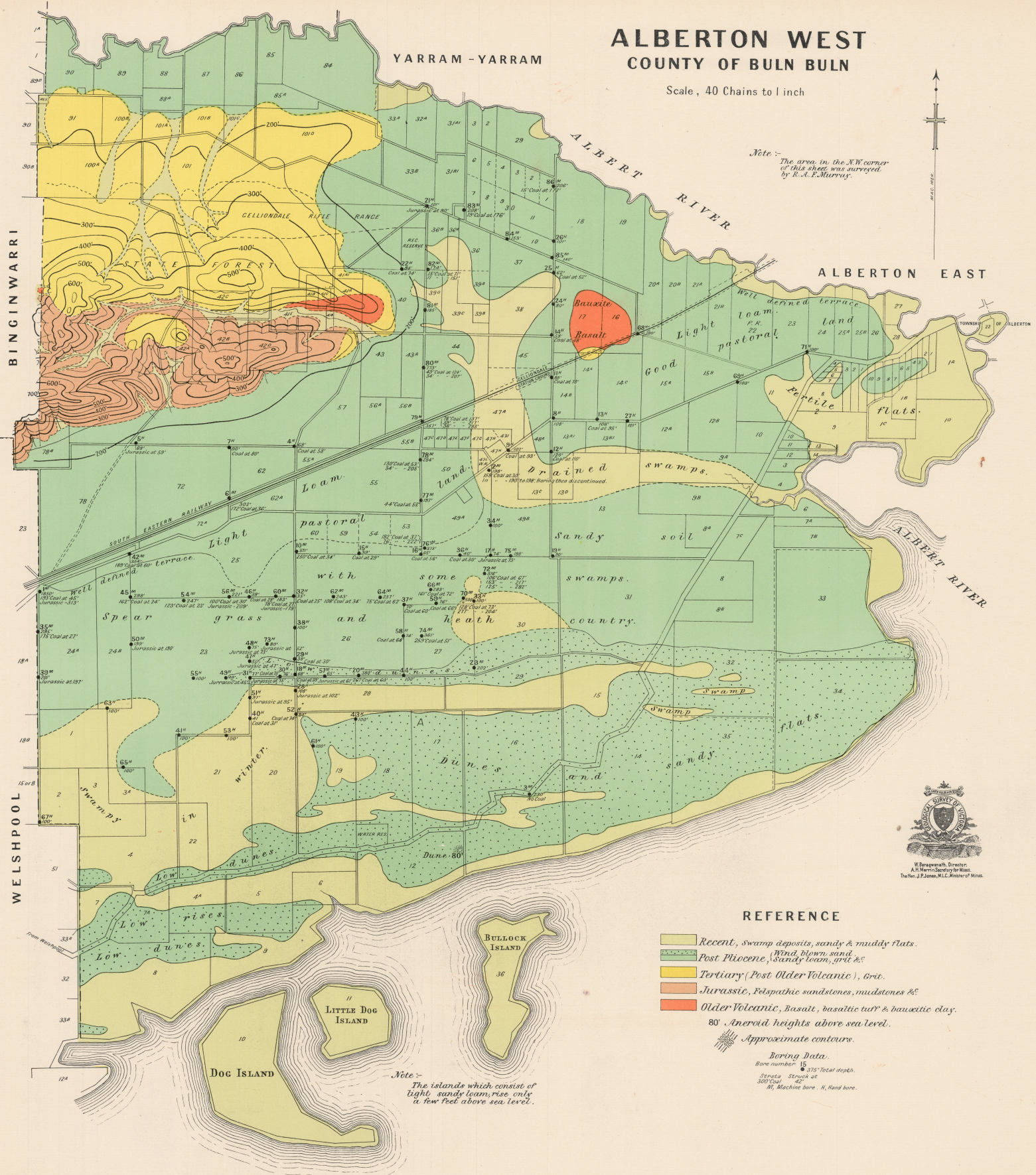


ALBERTON WEST COUNTY OF BUL BUL

Scale, 40 Chains to 1 inch

Note:-
The area in the NW corner
of this sheet was surveyed
by R. A. F. Murray.



REFERENCE

- Recent, swamp deposits, sandy & muddy flats.
- Post Pliocene, Wind blown sand & loam, silt & gravel.
- Tertiary (Post Older Volcanic), Grt.
- Jurassic, Felspathic sandstones, mudstones &c.
- Older Volcanic, Basalt, basaltic tuff & basaltic clay.
- 80' Aneroid heights above sea level.
- Approximate contours.

Boring Data.
Bore number 15
Strata struck at 375' total depth.
300' Coal 42'
M. Machine bore. H. Hand bore.

Note:-
The islands which consist of
light sandy loam, rise only
a few feet above sea level.



W. Ferguson, Draughtsman.
A. H. Murray, Secretary for Plans.
Thos. J. Jones, M.L.C., Minister of Mines.