

U/R 1954/63.

U/R 1954/63

44 CM

# PARISH OF ARGYLE COUNTY OF GRENVILLE

PARISH OF CARNHAM

SCALE OF CHAINS  
Crown Lands Dep. Melbourne.

PARISH OF NANIMIA

PARISH OF MORTCHUP

COUNTY OF RIPON

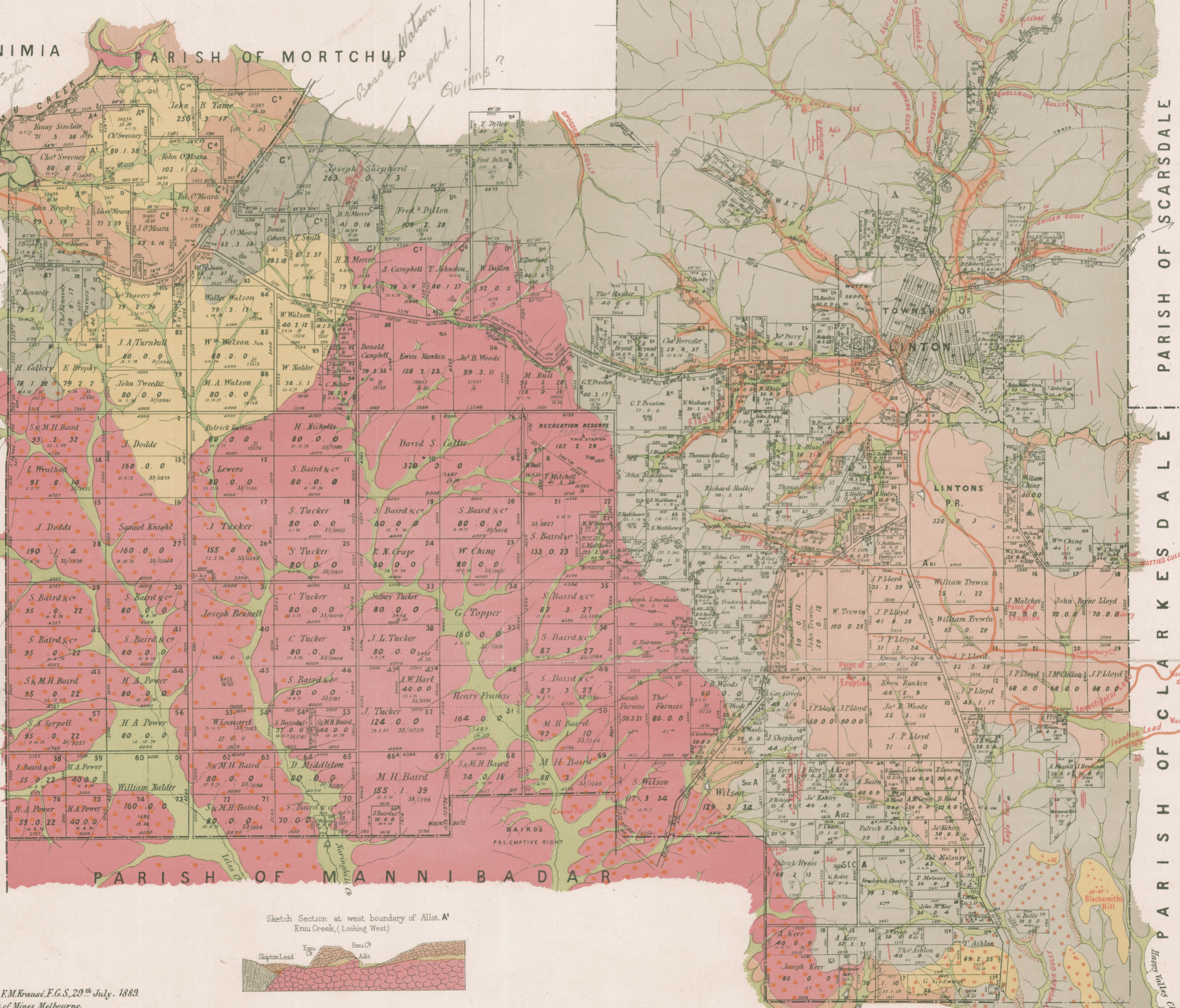
PARISH OF SKIPTON  
COUNTY OF HAMPDEN

PARISH OF SCARSDALE  
PARISH OF CLARKESDALE  
PARISH OF MANNIBADAR

### REFERENCE

- Post Pliocene
- Upper Pliocene
- Middle Pliocene
- Lower Pliocene
- Silturian
- Newer Volcanic
- Granite

(Quartz Reefs, +s Shafts)



Sketch Section at west boundary of Allot A' Emu Creek, (Looking West)



Geologically surveyed by E.M. Krause, F.G.S., 29<sup>th</sup> July, 1889.  
Department of Mines, Melbourne.