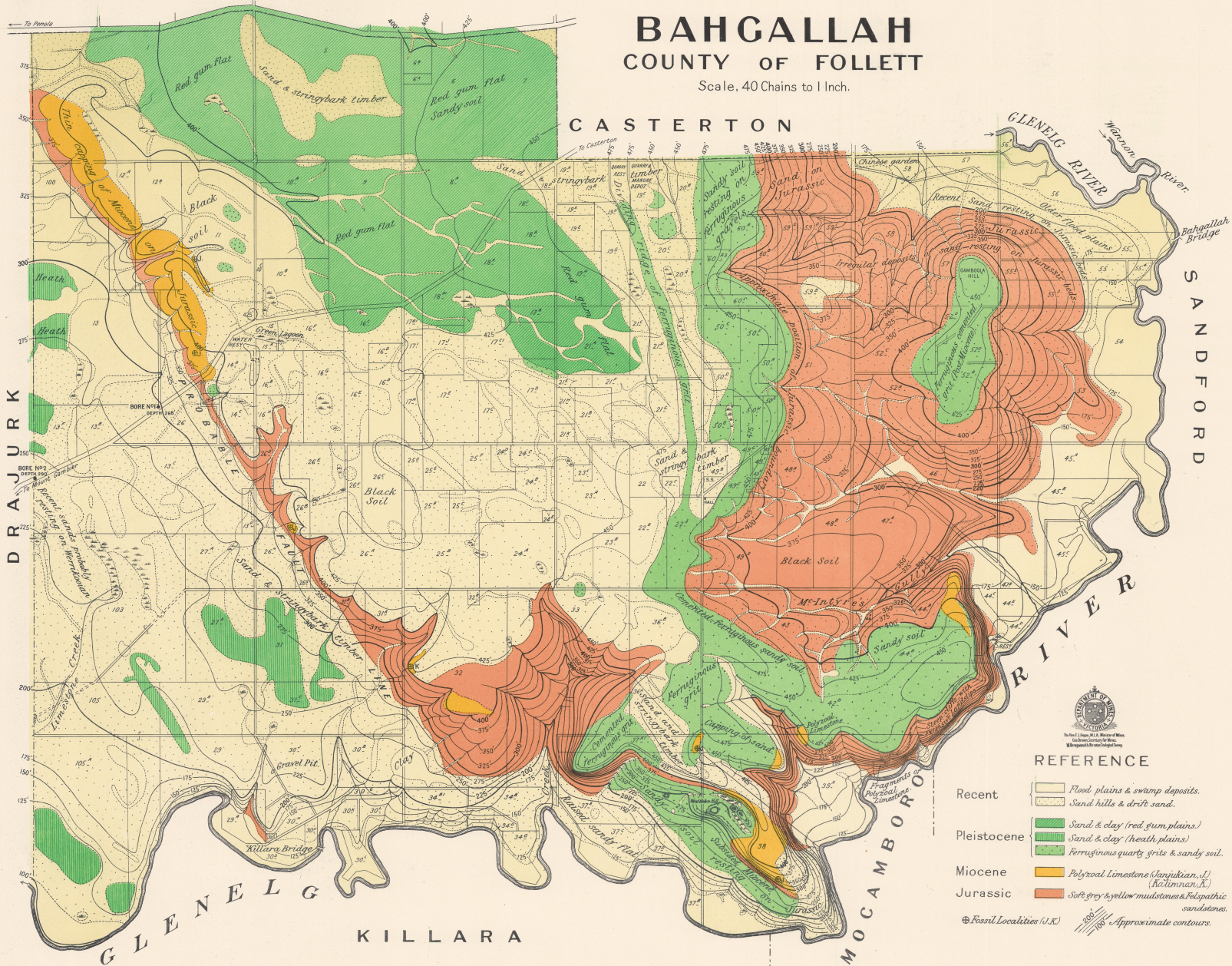


BAHGALLAH COUNTY OF FOLLETT

Scale, 40 Chains to 1 Inch.



REFERENCE

- | | | |
|-------------|--|--|
| Recent | | Flood plains & swamp deposits. |
| | | Sand hills & drift sand. |
| Pleistocene | | Sand & clay (red gum plains.) |
| | | Sand & clay (heath plains) |
| | | Ferrous quartz grits & sandy soil. |
| Miocene | | Polyzoal Limestone (<i>Saryjukian</i> , <i>L. Kallinman</i> & <i>L.</i>) |
| Jurassic | | Soft grey & yellow mudstones & felspathic sandstones. |
- ⊕ Fossil Localities (U.K.) Approximate contours.