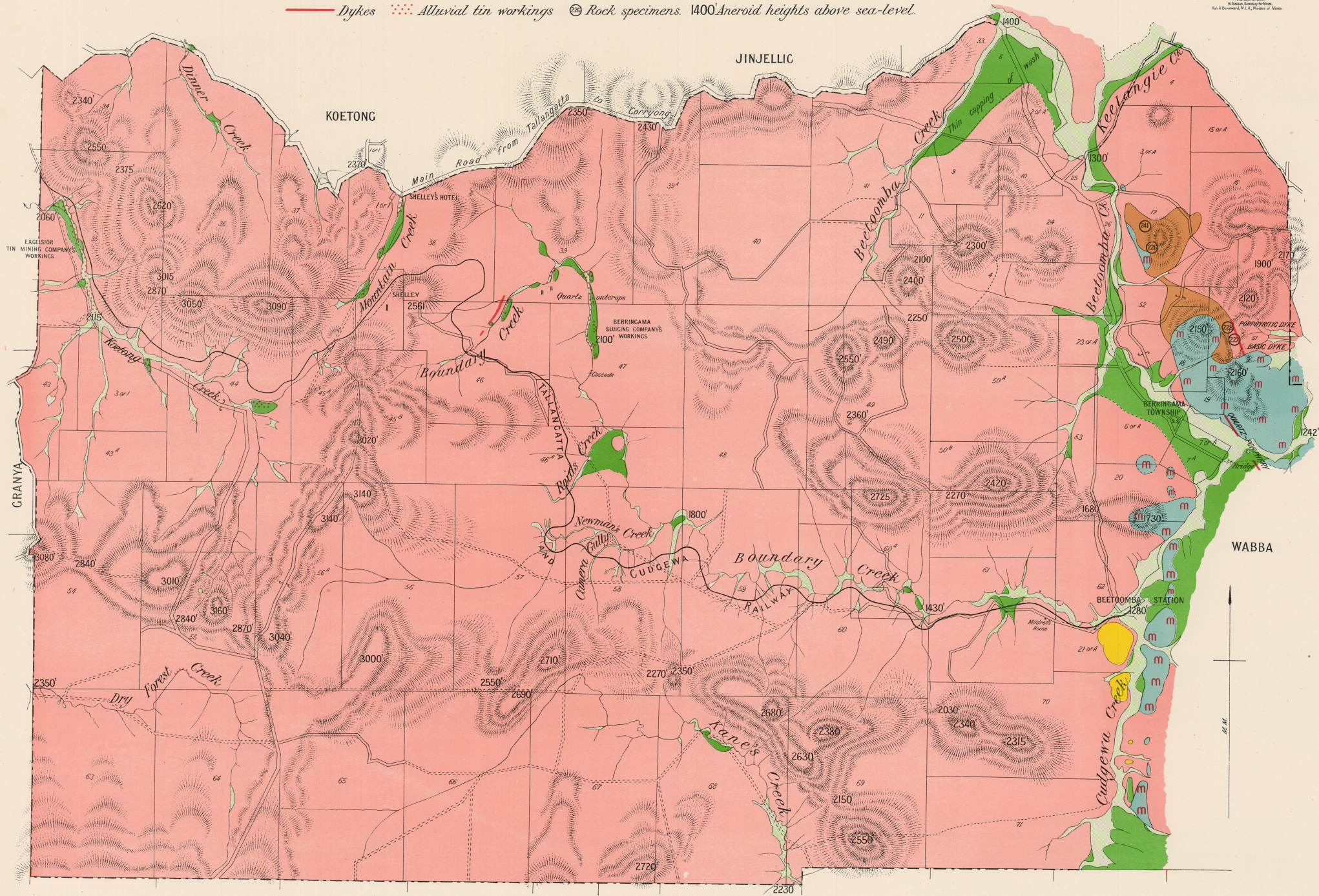


BERRINGAMA

Scale - 40 Chains to 1 Inch.

- Recent (Alluvial flats and hill-talus)
 Post Pliocene (Terraces of coarse gravel, sands and clays)
 Newer Pliocene (Older terraces of cemented well-rounded quartz pebbles)
 ?Devonian (Quartz-porphry and felsite)
 m m Metamorphosed Ordovician (Schists and indurated sandstones)
 Granite.
- Dykes
 Alluvial tin workings
 Rock specimens. 1400' Aneroid heights above sea-level.



Geologically surveyed by J.G.Euston, Assistant Field Geologist.

CANABORE

Published 1917, Lith'd by A.L.S.