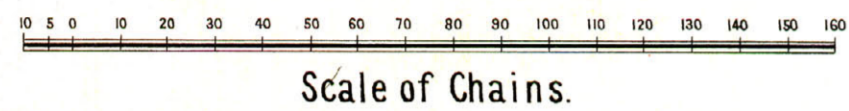


PARISH OF BET BET

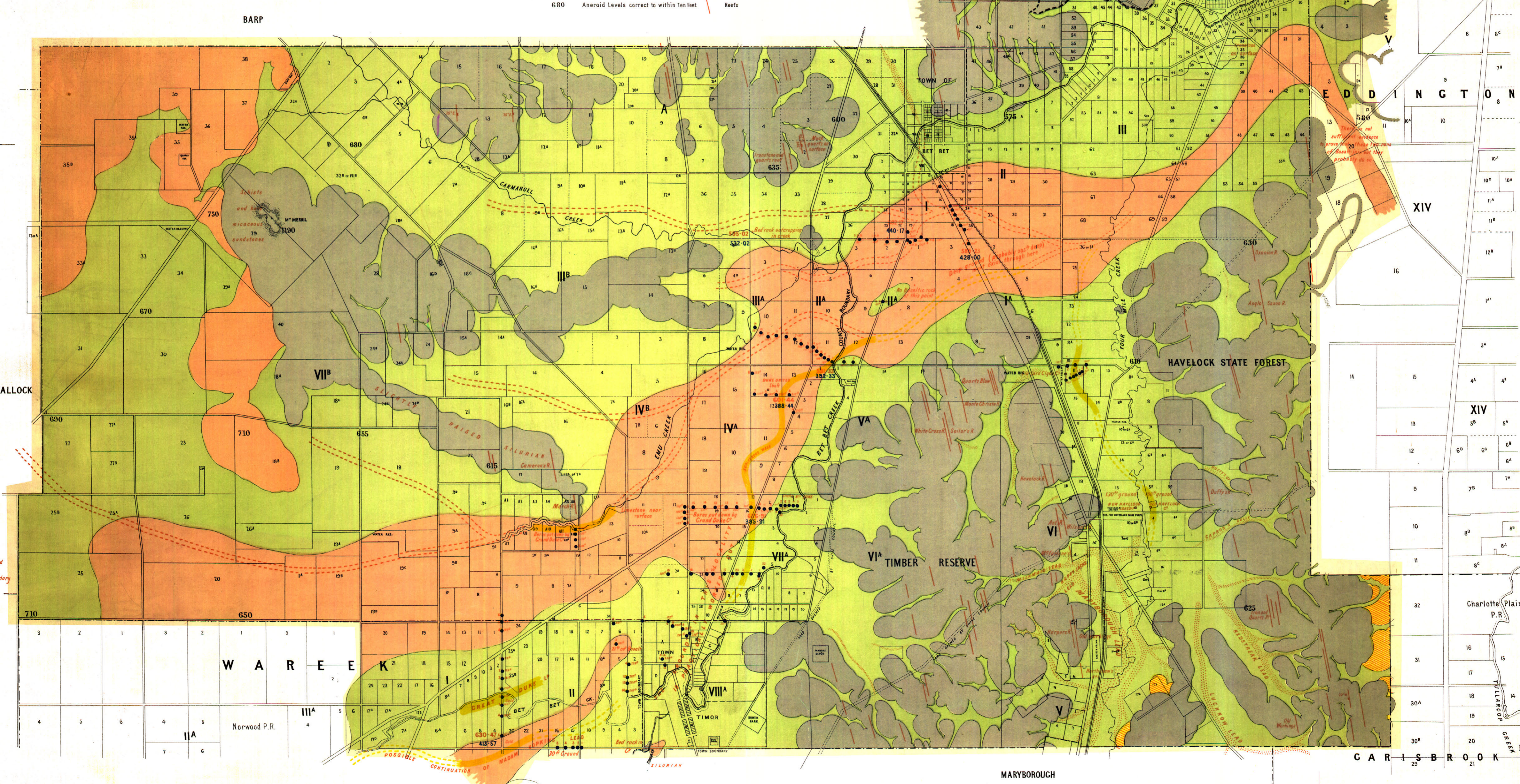
Counties of Gladstone and Talbot



REFERENCE

- GRANITE (Grey)
- SILURIAN Consisting of Schists, Sandstones, Slates and Reefs
- TERTIARY - - Alluvial flats &c
- " " Basaltic flows "Pliocene"
- " " Cement beds not necessarily auriferous
- " " Old Alluvial workings (Shallow)
- Approximate position of unworked Leads
- Known " " not necessarily auriferous
- Suggested position of Tributaries & portions of Leads of which there is no reliable data to fix the course
- 585-00 (Correct Surface Levels) Datum Sea Level Hobson's Bay
- 423-17 Bed rock
- 680 Aneroid Levels correct to within ten feet
- Reefs

Note. The portions within ticked lines should have been colored green (Tertiary)



Silurian and granite close to boundary

Charlotte Plains P.R.
TULLAGOON CREEK

MARYBOROUGH