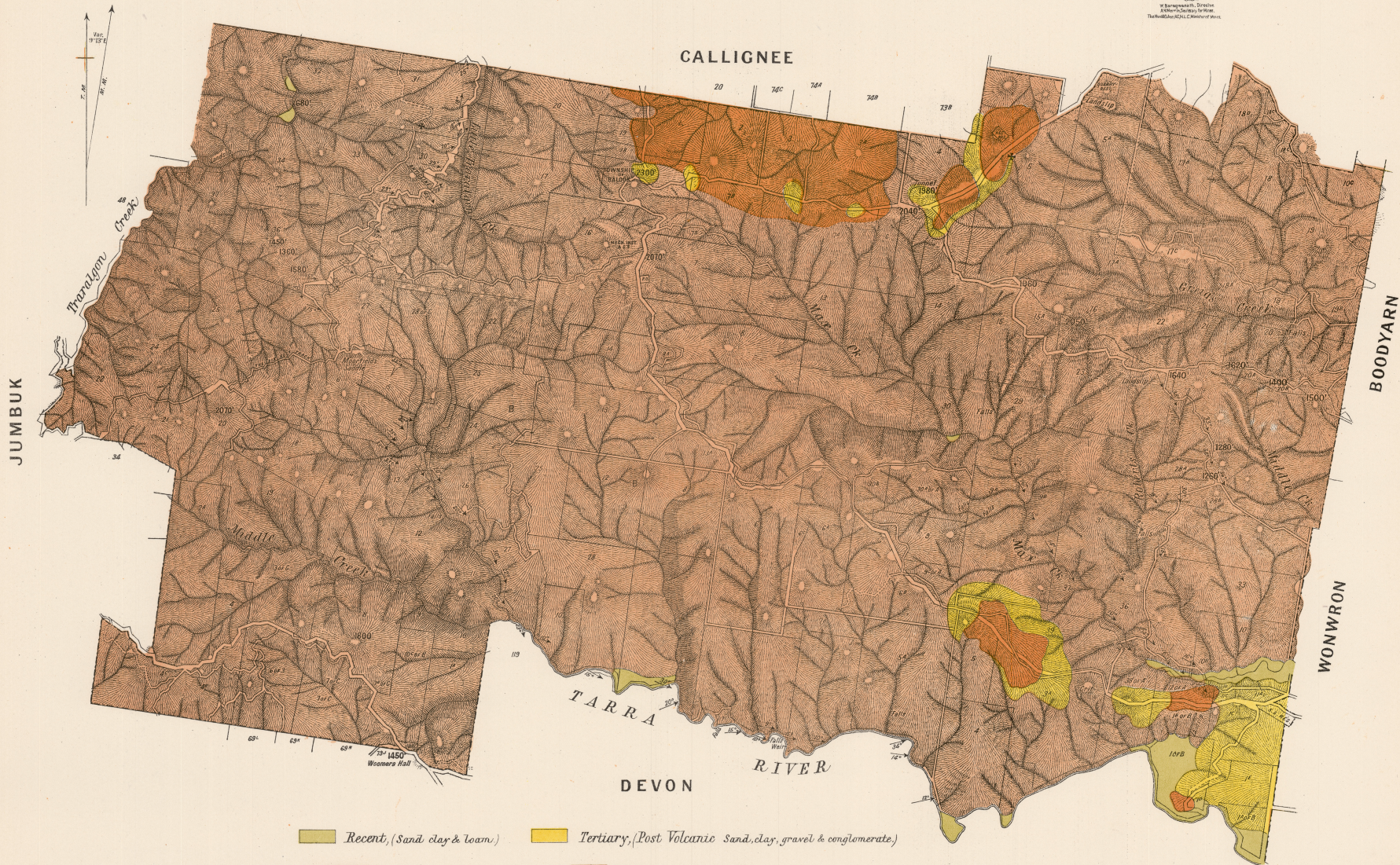


# BULGA COUNTY OF BULN-BULN

Scale, 40 Chains to 1 inch



- Recent, (Sand, clay & loam.)
- Tertiary, (Post Volcanic Sand, clay, gravel & conglomerate.)
- Volcanic, (Basalt, tuffs & clays)
- Jurassic, (Mudstone, shales & sandstones)

$\nabla$  Dip of strata. \* Springs. 2160' Aneroid heights above sea level.

NOTE, On the areas which are under dense scrub the work shown has been sketched only