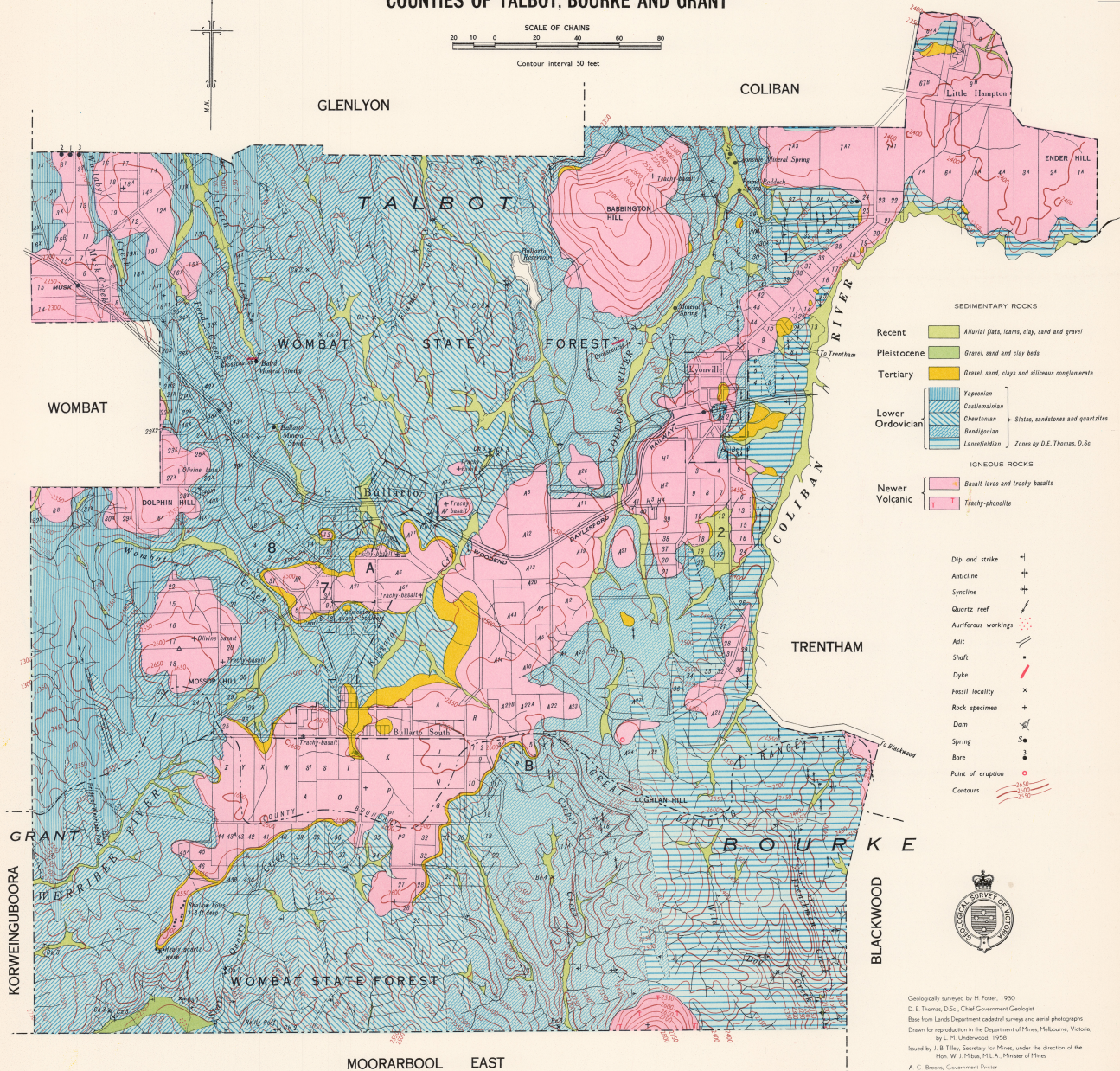
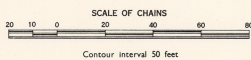


BULLARTO

COUNTIES OF TALBOT, BOURKE AND GRANT



- SEDIMENTARY ROCKS
- Recent ■ Alluvial flats, loams, clay, sand and gravel
 - Pleistocene ■ Gravel, sand and clay beds
 - Tertiary ■ Gravel, sand, clays and siliceous conglomerates
 - Lower Ordovician ■ Yapeanien } Slates, sandstones and quartzites
 - Castlemainian }
■ Chertonian }
■ Banningtonian }
■ Lowerfeldian } Zones by D.E. Thomas, D.Sc.
- IGNEOUS ROCKS
- Newer Volcanic ■ Basalt lavas and trachy basalts
 - Trachy-phonolite

- Dip and strike +
- Anticline + +
- Syncline + -
- Quartz reef /
- Auriferous workings •••••
- Aoic x
- Shaft |
- Dyke /
- Fossil locality x
- Rock specimen +
- Dam X
- Spring S
- Bore •
- Point of eruption o
- Contours —



Geologically surveyed by H. Foster, 1900.
 D. E. Thomas, D.Sc., Chief Government Geologist
 Base from Lands Department cadastral surveys and aerial photographic
 Drawn for reproduction in the Department of Mines, Melbourne, Victoria,
 by H. M. Underwood, 1958.
 Issued by J. B. Tilley, Secretary for Mines, under the direction of the
 Hon. W. J. Peab, M.L.A., Minister of Mines
 A. C. Brodie, Government Printer