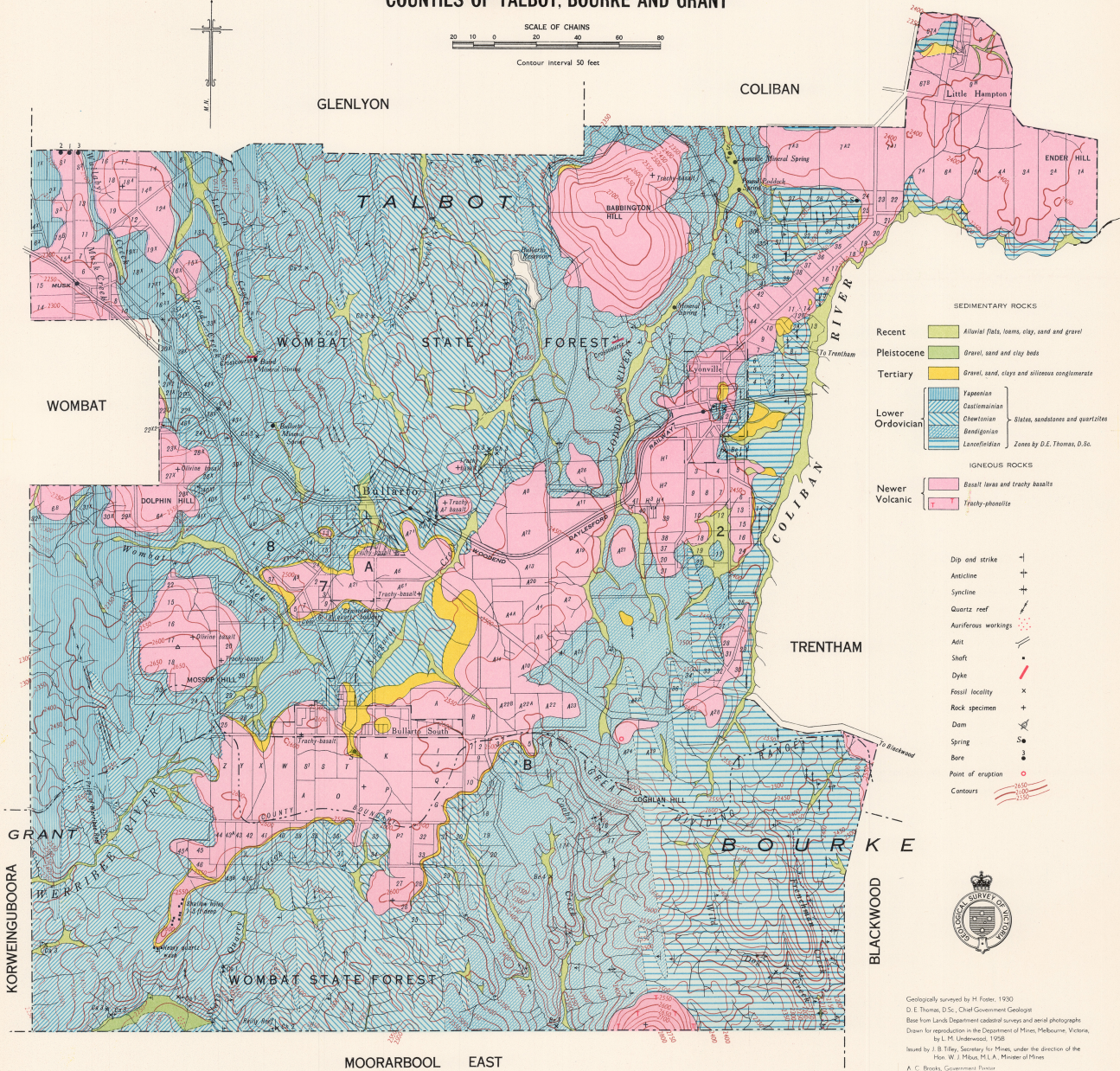
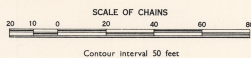


BULLARTO

COUNTIES OF TALBOT, BOURKE AND GRANT



- SEDIMENTARY ROCKS
- Recent █ Alluvial flats, loams, clay, sand and gravel
 - Pleistocene █ Gravel, sand and clay beds
 - Tertiary █ Gravel, sand, clays and siliceous conglomeration
- Lower Ordovician
- █ Yapeenian
 - █ Castlemainian
 - █ Chewonian
 - █ Benettonian
 - █ Lancelfieldian
- } Slates, sandstones and quartzites
Zones by D.E. Thomas, D.Sc.
- IGNEOUS ROCKS
- Newer Volcanic █ Basalt lavas and trachy basalts
 - █ Trachy-andalite

- Dip and strike +
- Anticline +
- Syncline +
- Quartz reef +
- Auriferous workings +
- Adit +
- Shaft +
- Dyke +
- Fossil locality +
- Rock specimen +
- Dam +
- Spring +
- Bore +
- Point of eruption +
- Contours +



Geologically surveyed by H. Foster, 1930
 D. E. Thomas, D.Sc., Chief Government Geologist
 Based on Lands Department cadastral surveys and aerial photographs
 Drawn for reproduction in the Department of Mines, Melbourne, Victoria,
 by L. H. Lindemann, 1958
 Issued by J. B. Eiler, Secretary for Mines, under the direction of the
 Hon. W. J. M'Gill, M.L.A., Minister of Mines
 A. C. Brooks, Government Printer