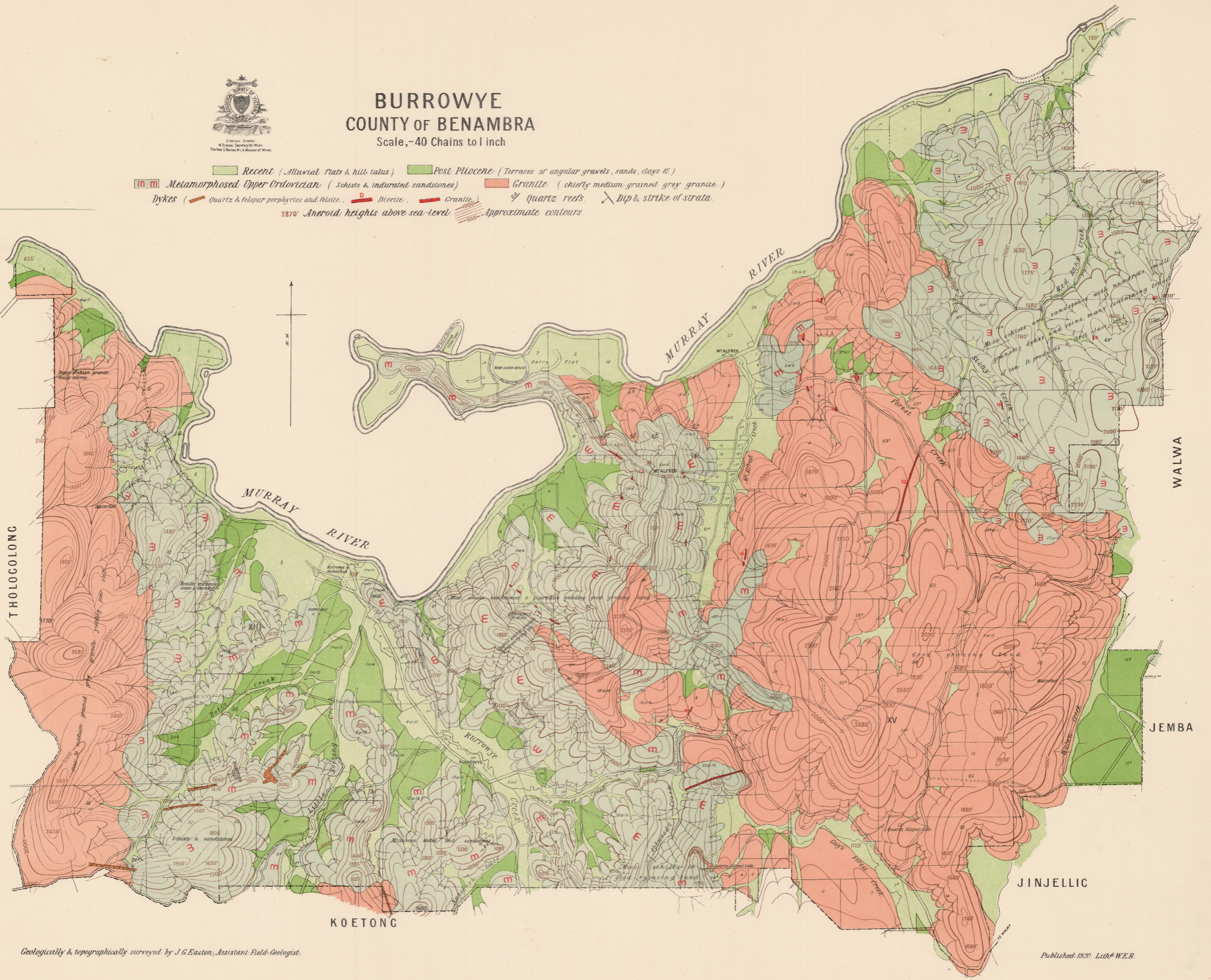




# BURROWYE COUNTY OF BENAMBRA

Scale, -40 Chains to 1 inch

Recent (Alluvial flats & hill talus)    Post Pliocene (Terraces of angular gravels, sands, clays & c.)  
 Metamorphosed Upper Ordovician (Schists & indurated sandstones)    Granite (chiefly medium grained grey granite.)  
 Dykes ( Quartz & felspar porphyries and felsite,    Diorite,    Granite )    Quartz reefs.    Dip & strike of strata.  
 Aneroid heights above sea-level.    Approximate contours



Geologically & topographically surveyed by J.G. Easton, Assistant Field Geologist.