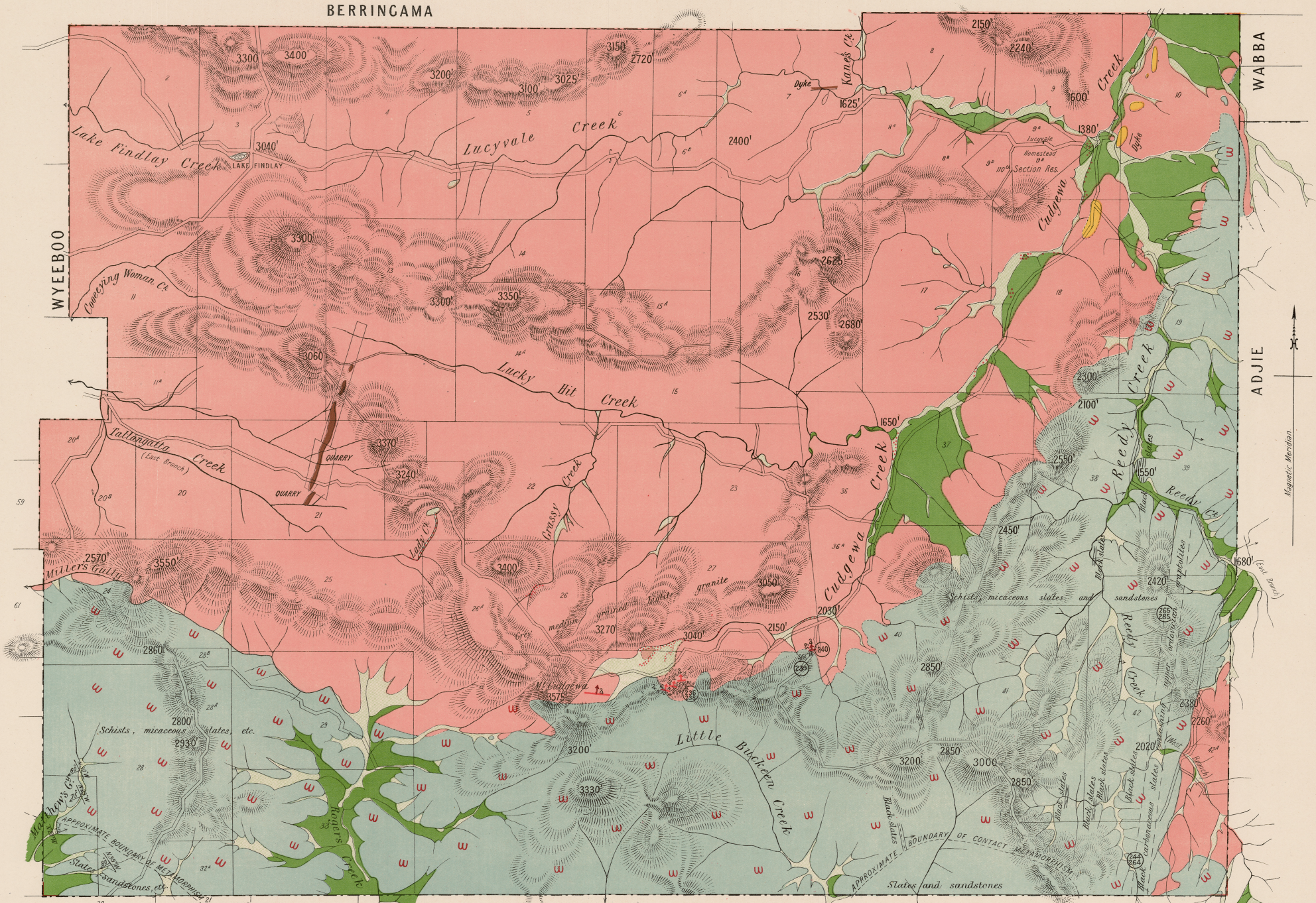


CANABORE

Scale—40 Chains to 1 Inch.



- Recent (Alluvial flats and hill talus)
- Post Pliocene (Terraces of gravels, sands and clays)
- Newer Pliocene (Older terraces of well-rounded quartz gravels)
- Upper Ordovician (Slates and sandstones)
- Metamorphosed Upper Ordovician (Schists and indurated sandstones)
- Granite
- Porphyritic dykes, Tin lodes, Alluvial tin workings, Rock specimens, 2600' Aneroid heights above sea-level.



KEELANGIE

Geologically surveyed by J. G. Easton. Published 1917.

Lith. by A. L. Smith.

