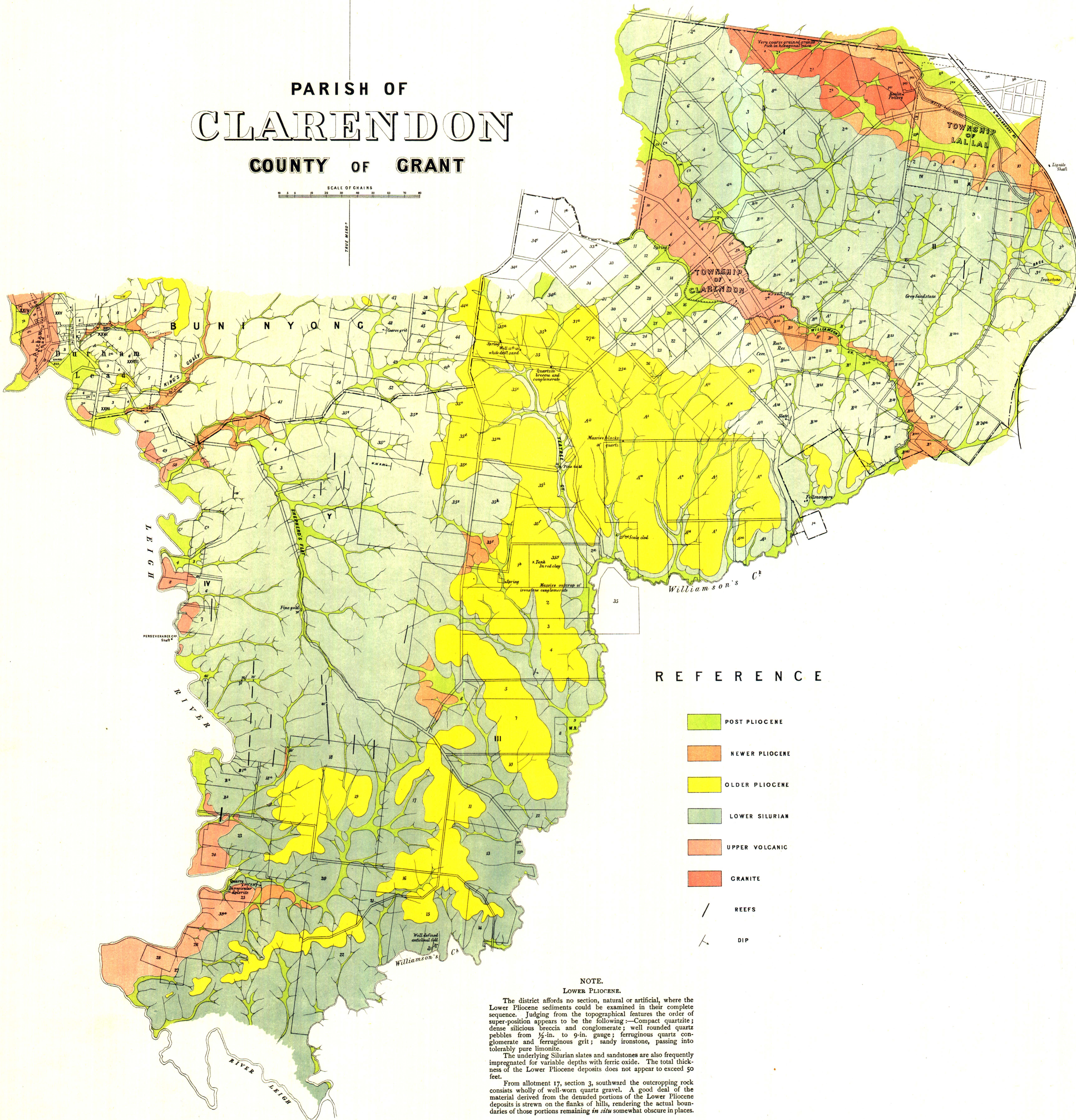


PARISH OF CLARENDON COUNTY OF GRANT

SCALE OF CHAINS
0 5 10 20 30 40 50 60 70 80

TRUE MERO



R E F E R E N C E

- POST PLOCIENE
- NEWER PLOCIENE
- OLDER PLOCIENE
- LOWER SILURIAN
- UPPER VOLCANIC
- GRANITE
- REEFS
- DIP

NOTE. LOWER PLOCIENE.

The district affords no section, natural or artificial, where the Lower Pliocene sediments could be examined in their complete sequence. Judging from the topographical features the order of super-position appears to be the following:—Compact quartzite; dense silicious breccia and conglomerate; well rounded quartz pebbles from ½-in. to 9-in. gauge; ferruginous quartz conglomerate and ferruginous grit; sandy ironstone, passing into tolerably pure limonite.

The underlying Silurian slates and sandstones are also frequently impregnated for variable depths with ferric oxide. The total thickness of the Lower Pliocene deposits does not appear to exceed 50 feet.

From allotment 17, section 3, southward the outcropping rock consists wholly of well-worn quartz gravel. A good deal of the material derived from the denuded portions of the Lower Pliocene deposits is strewn on the flanks of hills, rendering the actual boundaries of those portions remaining *in situ* somewhat obscure in places.