

DOOMBURRIM

COUNTY OF BUL BUL

Scale - 40 Chains to an inch.

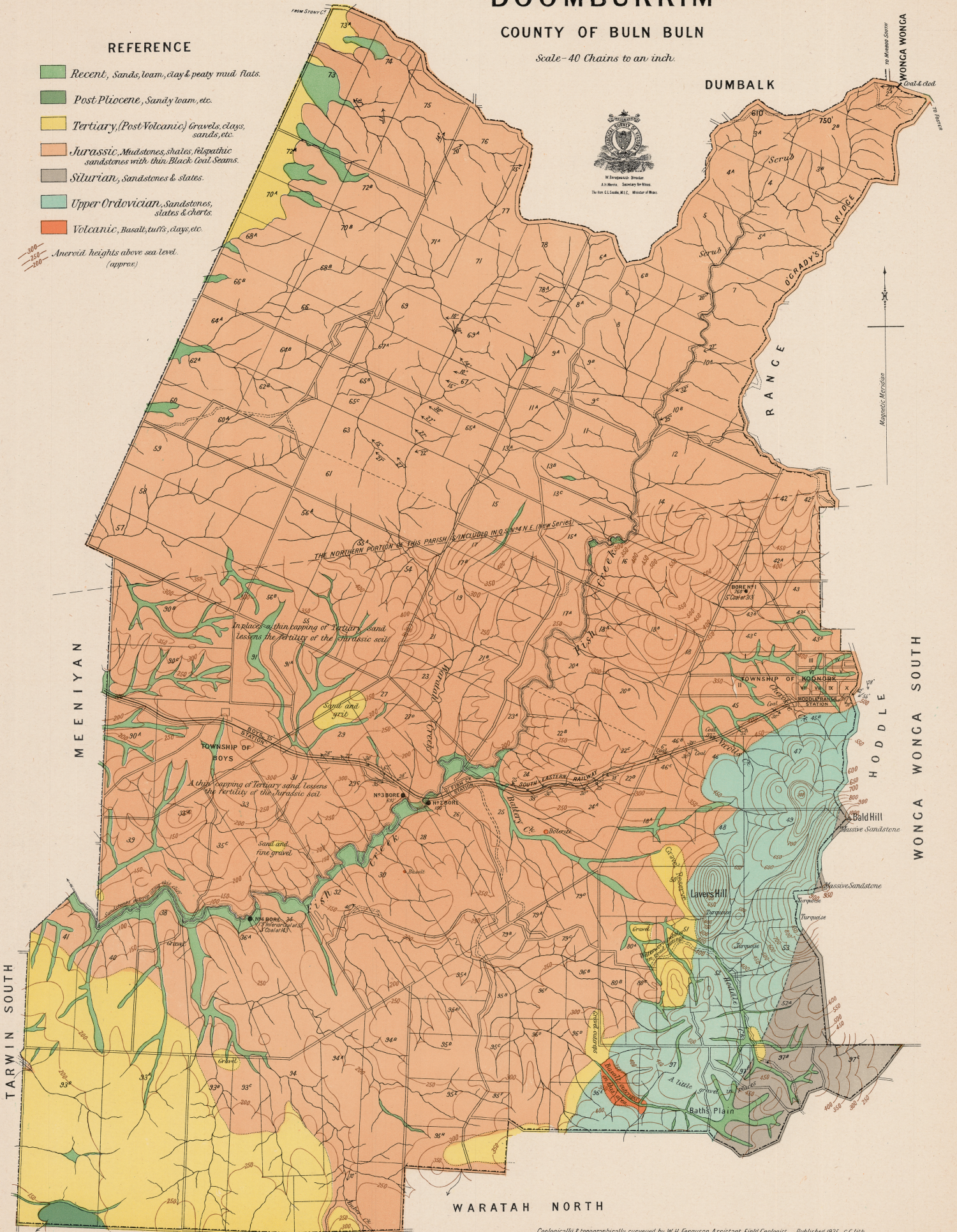
REFERENCE

- Recent, Sands, loam, clay & peaty mud flats.
- Post Pliocene, Sandy loam, etc.
- Tertiary, (Post-Volcanic) Gravels, clays, sands, etc.
- Jurassic, Mudstones, shales, felspathic sandstones with thin Black Coal Seams.
- Silurian, Sandstones & shales.
- Upper Ordovician, Sandstones, shales & cherts.
- Volcanic, Basalt, tuffs, clays, etc.

Aneroid heights above sea level. (approx)



W. Ferguson, Director
A. H. Moore, Secretary for Mines
The Hon. C. Cook, M.L.C., Minister of Mines



WARATAH NORTH