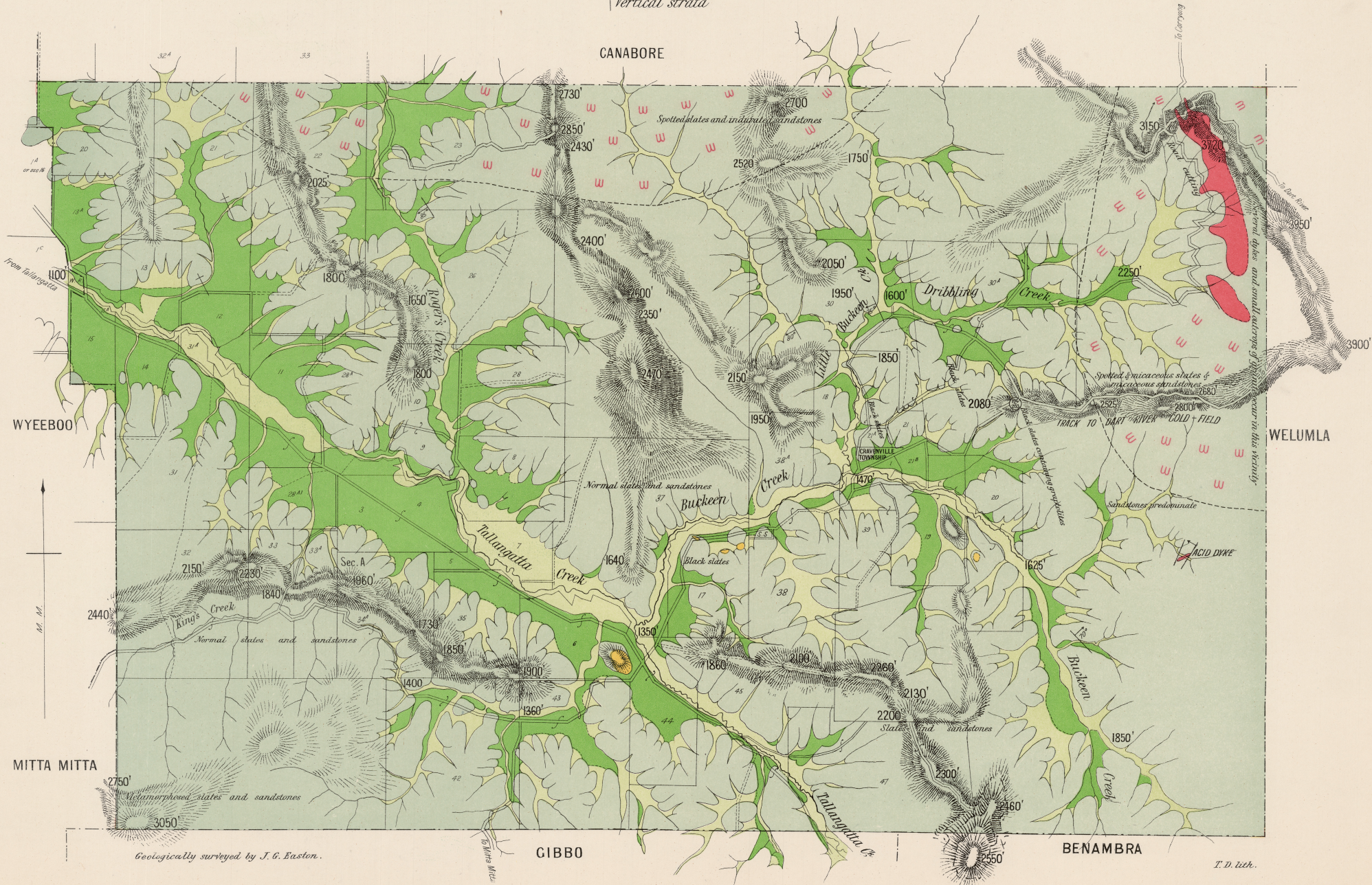


KEELANGIE

Scale—40 Chains to 1 Inch.



- Recent. (Alluvial flats & hill-talus)
- Post-Pliocene. (Newer terraces of rounded & angular gravels & clays)
- Newer Pliocene. (Older terraces of rounded gravels)
- Ordovician. (Slates & sandstones)
- Metamorphosed Ordovician. (Micaceous & spotted slates, micaceous sandstones, schists etc.)
- Granite.
- Rock specimens
- 3950' Aneroid heights above sea-level
- Dip & strike of strata.
- Vertical strata



Geologically surveyed by J. G. Easton.

T. D. Lith.