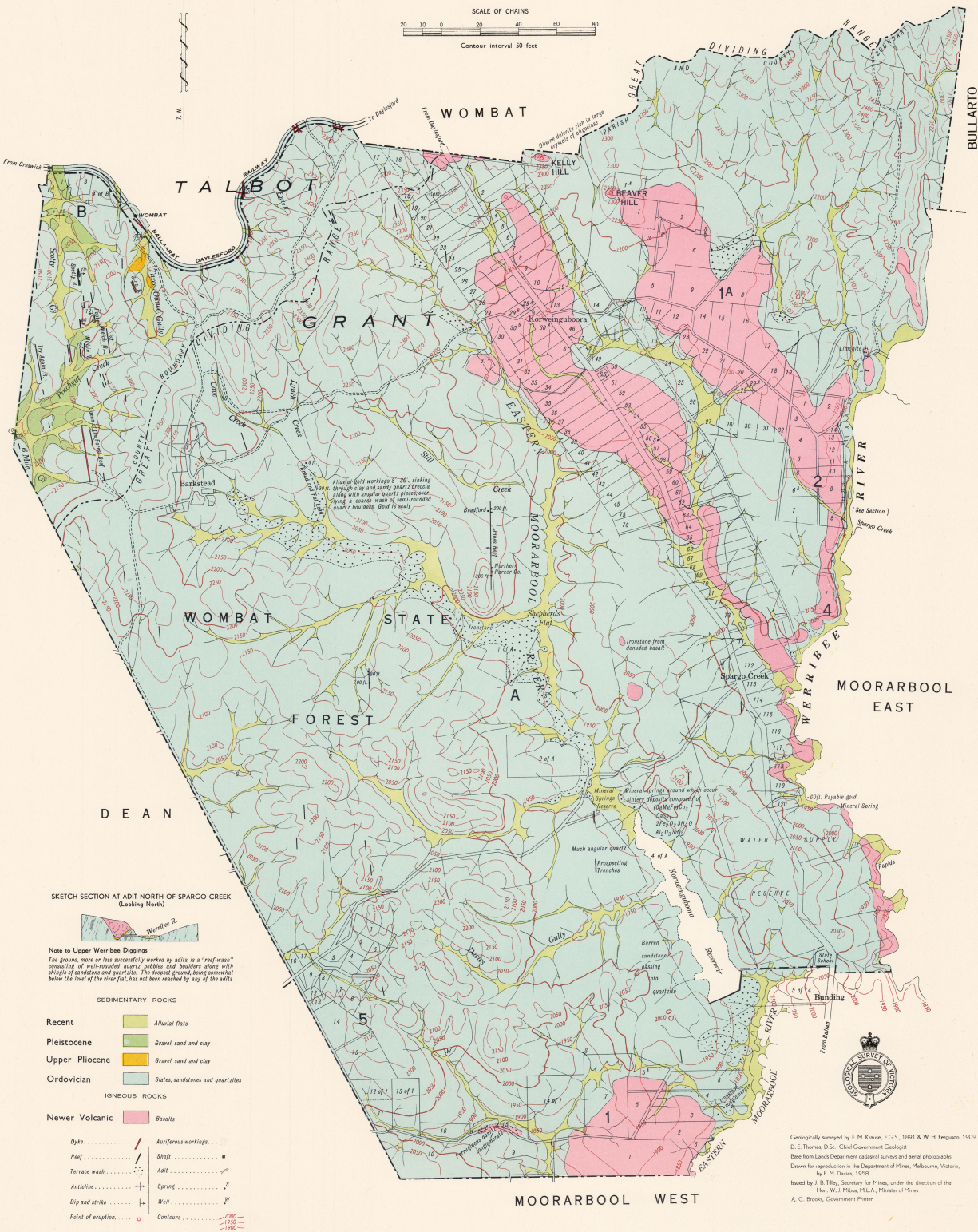


KORWEINGUBOORA COUNTIES OF GRANT AND TALBOT

SCALE OF CHAINS



Contour interval 50 feet



DEAN

SKETCH SECTION AT ADIT NORTH OF SPARGO CREEK (Looking North)



Note to Upper Werriffe Diapir
The ground more or less successfully worked by adits, is a "reef-wash" consisting of well-rounded quartz pebbles and boulders along with shreds of ironstone and quartzite. The deepest ground, being somewhat below the level of the river flat, has not been reached by any of the adits

SEDIMENTARY ROCKS

- Recent Alluvial flats
- Pleistocene Gravel, sand and clay
- Upper Pliocene Gravel, sand and clay
- Ordovician Slates, sandstones and quartzites

IGNEOUS ROCKS

- Newer Volcanic Basalts

- Dyke
- Reef
- Terrace wash
- Anticline
- Dip and strike
- Point of eruption
- Auriferous workings
- Shaft
- Adit
- Spring
- Well
- Contours

Geologically surveyed by F. M. Krause, F.G.S., 1891-4. W. H. Ferguson, 1907
D. E. Thomas, D.Sc., Chief Government Geologist
Base from Lands Department cadastral surveys and aerial photographs
Drawn for reproduction in the Department of Mines, Melbourne, Victoria,
by E. M. Davies, 1958
Issued by J. B. Tiley, Secretary for Mines, under the direction of the
Hon. W. J. H. Miles, M.L.A., Minister of Mines
A. C. Brooks, Government Printer