

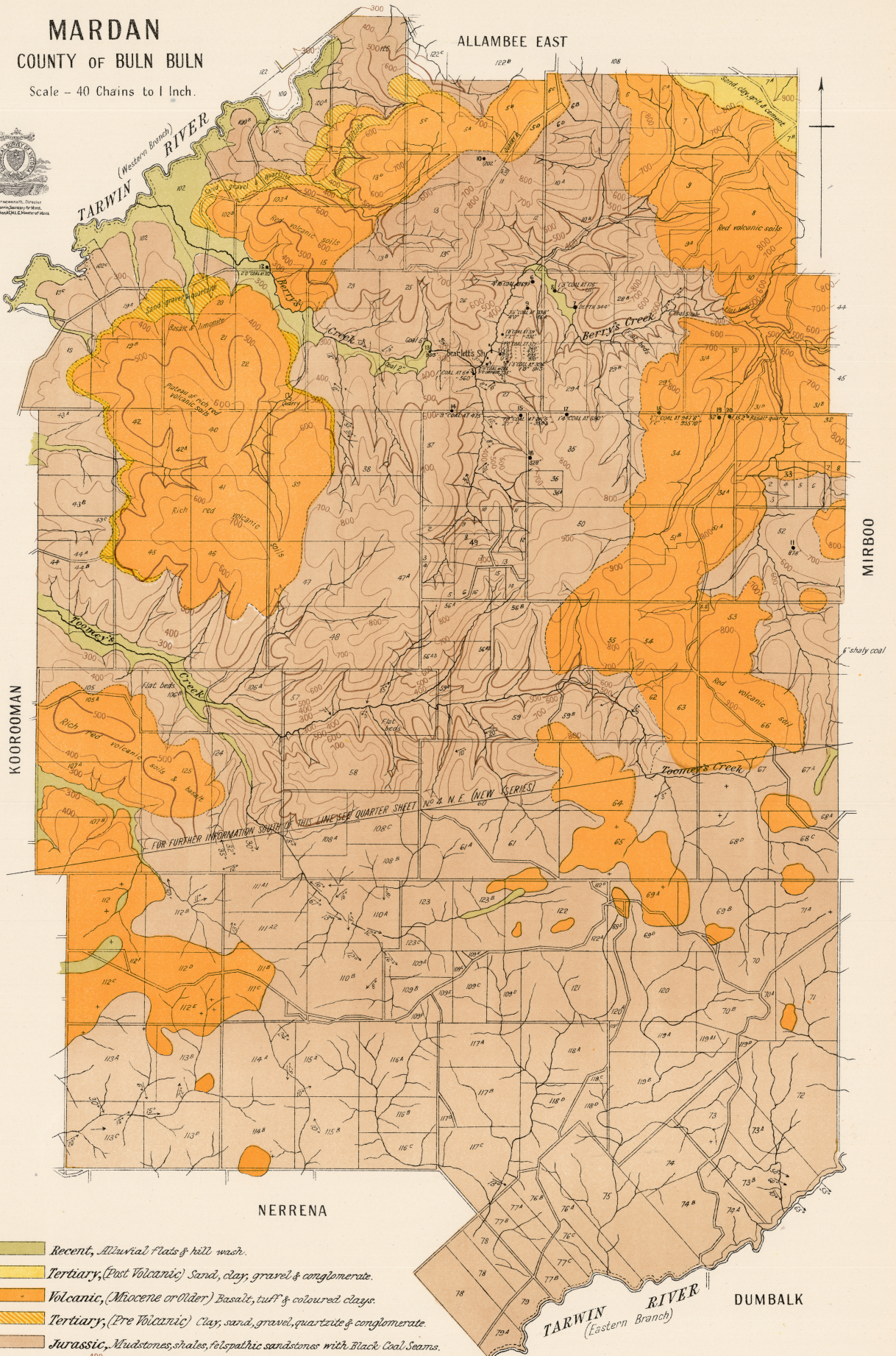
# MARDAN

## COUNTY OF BULN BULN

Scale - 40 Chains to 1 Inch.



By Appointment, Surveyor  
General and Geologist of Western  
Australia, 1901 & Director of Mines



- Recent, Alluvial flats & hill wash.
  - Tertiary, (Post Volcanic) Sand, clay, gravel & conglomerate.
  - Volcanic, (Miocene or older) Basalt, tuff & coloured clays.
  - Tertiary, (Pre Volcanic) Clay, sand, gravel, quartzite & conglomerate.
  - Jurassic, Mudstones, shales, felspathic sandstones with Black Coal seams.
- 400  
 500  
 600  
 Approximate aneroid contours above sea level.

Geologically & topographically surveyed by O. A. L. Whitlam, Field Geologist, 1923.  
Published 1923. T. D. Leth.