

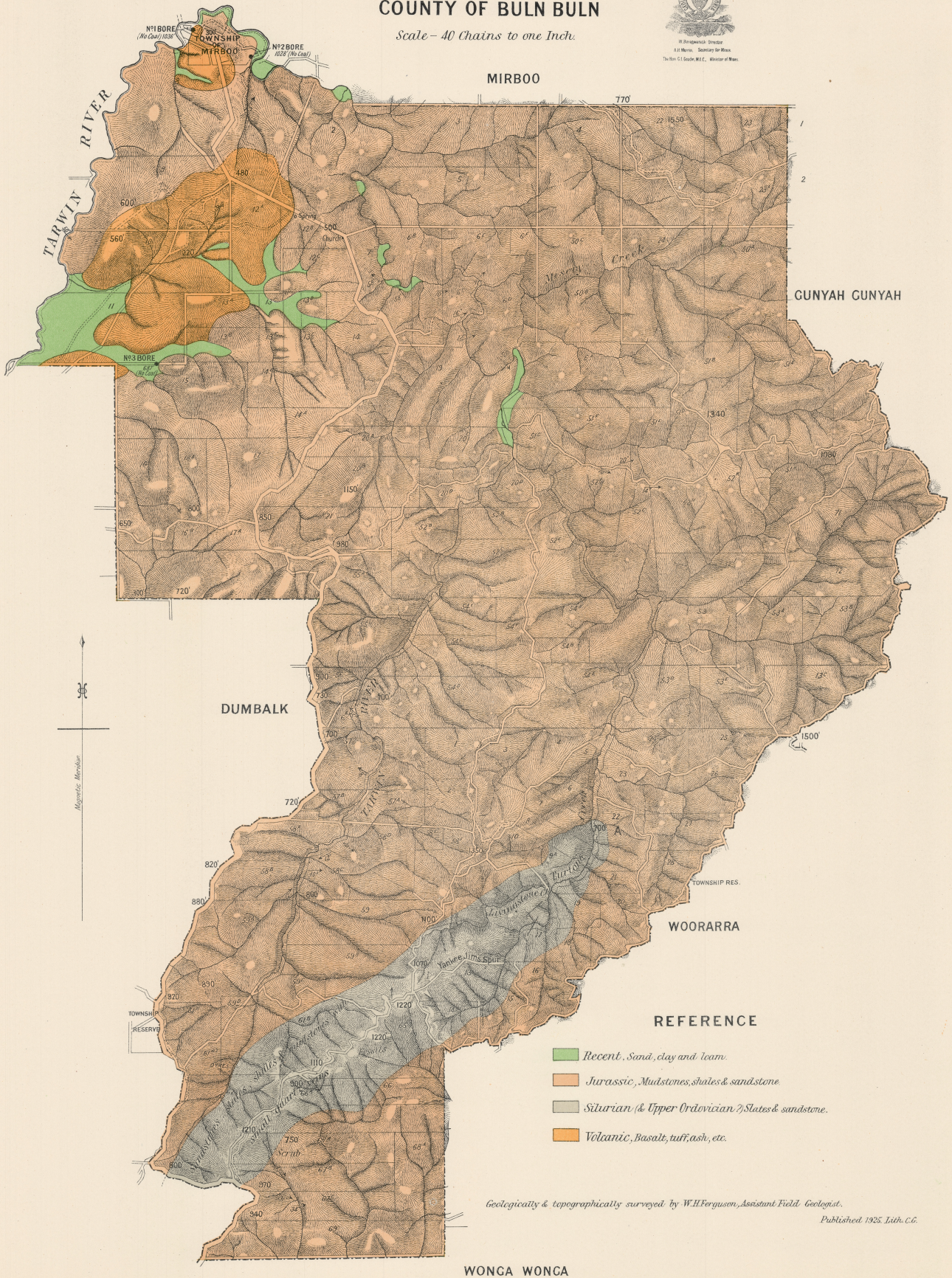
MIRBOO SOUTH

COUNTY OF BULN BULN

Scale - 40 Chains to one Inch.



H. Bingham, Director
 G. E. Murray, Secretary for Mines
 The Hon. G. E. Mearns, M.L.C., Minister of Mines



REFERENCE

- Recent, Sand, clay and loam.
- Jurassic, Mudstones, shales & sandstone.
- Silurian (& Upper Ordovician) Slates & sandstone.
- Volcanic, Basalt, tuff, ash, etc.

Geologically & topographically surveyed by W.H. Ferguson, Assistant Field Geologist.

Published 1925. Lith. C.G.