

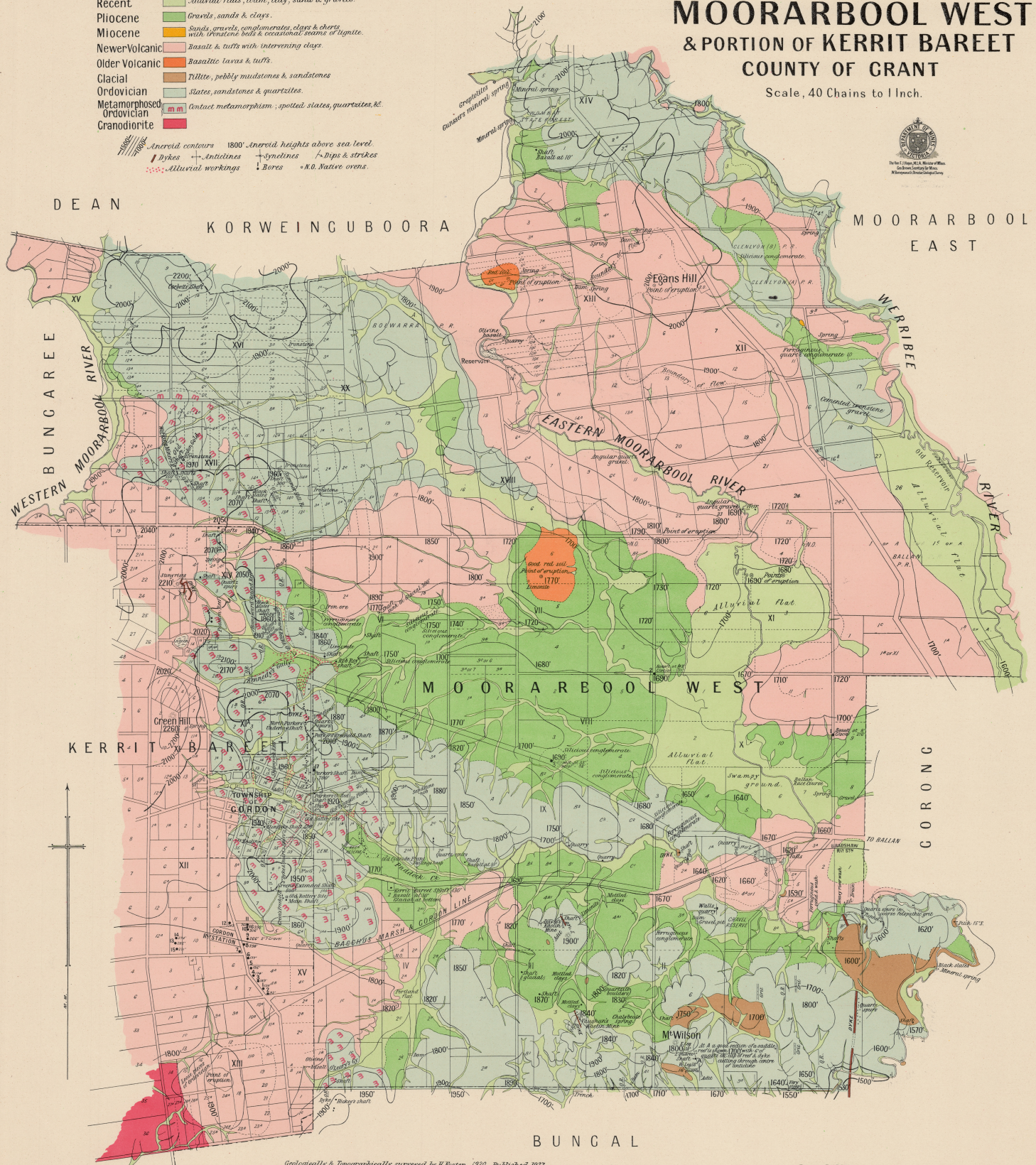
MOORARBOOL WEST & PORTION OF KERRIT BAREET COUNTY OF GRANT

Scale, 40 Chains to 1 Inch.



REFERENCE

- | | |
|--------------------------|--|
| Recent | ■ Alluvial flats, loam, clay, sand & gravels. |
| Pliocene | ■ Gravels, sands & clays. |
| Miocene | ■ Sands, gravels, conglomerates, clays & cherts with ironstone beds & occasional seams of lignite. |
| Newer Volcanic | ■ Basalt & tufts with intervening clays. |
| Older Volcanic | ■ Basaltic lavas & tufts. |
| Clacial | ■ Tillite, pebbly mudstones & sandstones. |
| Ordovician | ■ Slates, sandstones & quartzites. |
| Metamorphosed Ordovician | ■ Contact metamorphism, spotted slates, quartzites, &c. |
| Granodiorite | ■ |
-
- | | | | | |
|-------|-------------------|------|-------|---------------------------------|
| —•—•— | Aneroid contours | 1800 | —•—•— | Aneroid heights above sea level |
| —▲—▲— | Dykes | + | —▲—▲— | Anticlines |
| —•—•— | Alluvial workings | + | —•—•— | Synclines |
| —▲—▲— | Bore | + | —▲—▲— | Dips & strikes |
| | | | | N.O. Native ovens. |



Geologically & Topographically surveyed by E. Roster. 1920. Published 1937.

Drawn by H.E.B.