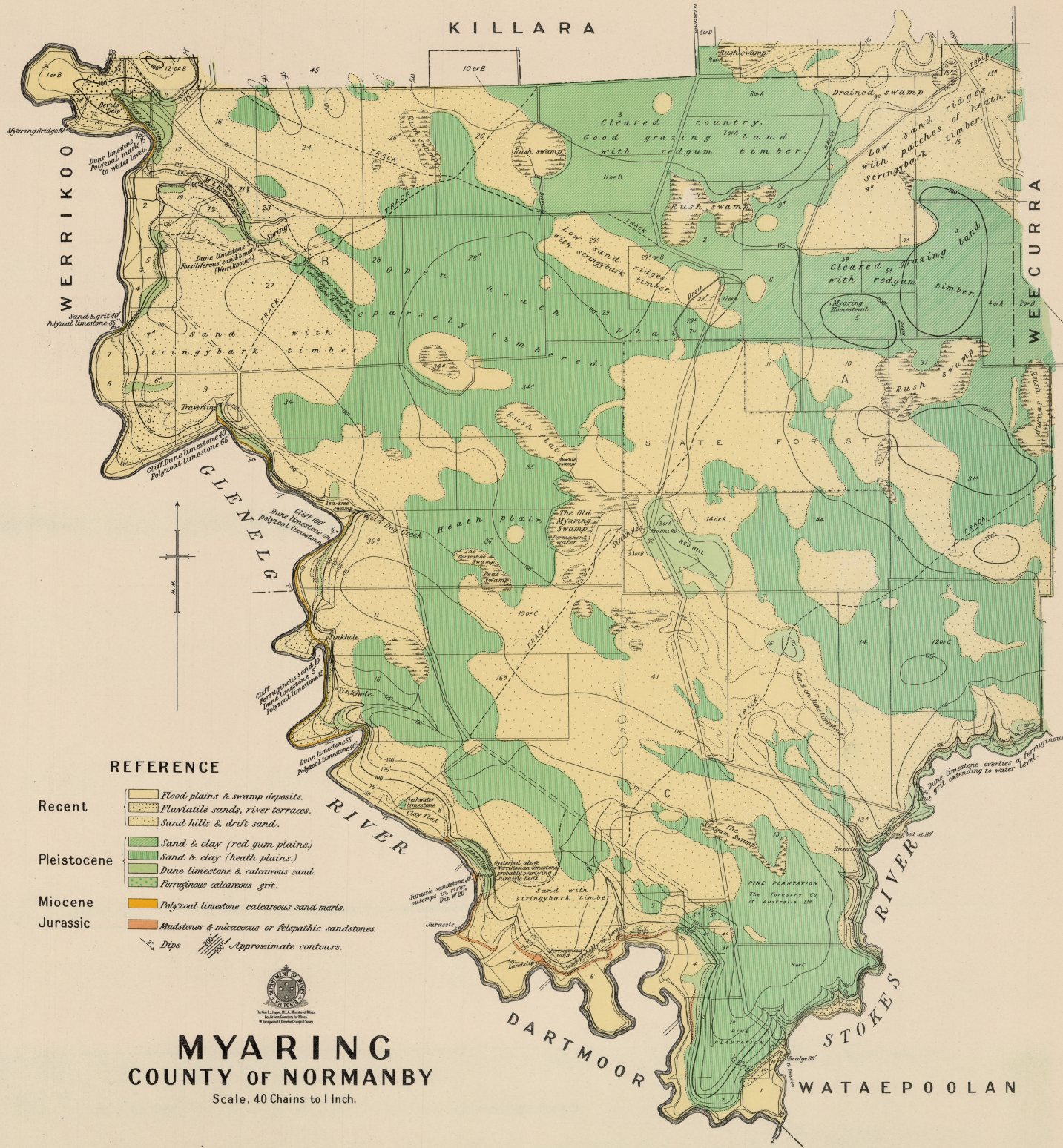


KILLARA



REFERENCE

- Recent
 - Flood plains & swamp deposits.
 - Fluvialite sands, river terraces.
 - Sand hills & drift sand.
 - Pleistocene
 - Sand & clay (red gum plains.)
 - Sand & clay (heath plains.)
 - Dune limestone & calcareous sand.
 - Feruginous calcareous grit.
 - Miocene
 - Polyzoal limestone calcareous sand marts.
 - Jurassic
 - Mudstones & micaceous or felspathic sandstones.
- Dips
 Approximate contours.



MYARING
COUNTY OF NORMANBY

Scale, 40 Chains to 1 Inch.

Geologically & Topographically surveyed by J. R. L. Kenny B.C.E. Field Geologist, assisted by L. S. McEachern, 1930. Published 1937.

Drawn by R.M.C.