

CORNELLA

GOBARUP

REDCASTLE

COUNTIES OF DALHOUSIE AND RODNEY

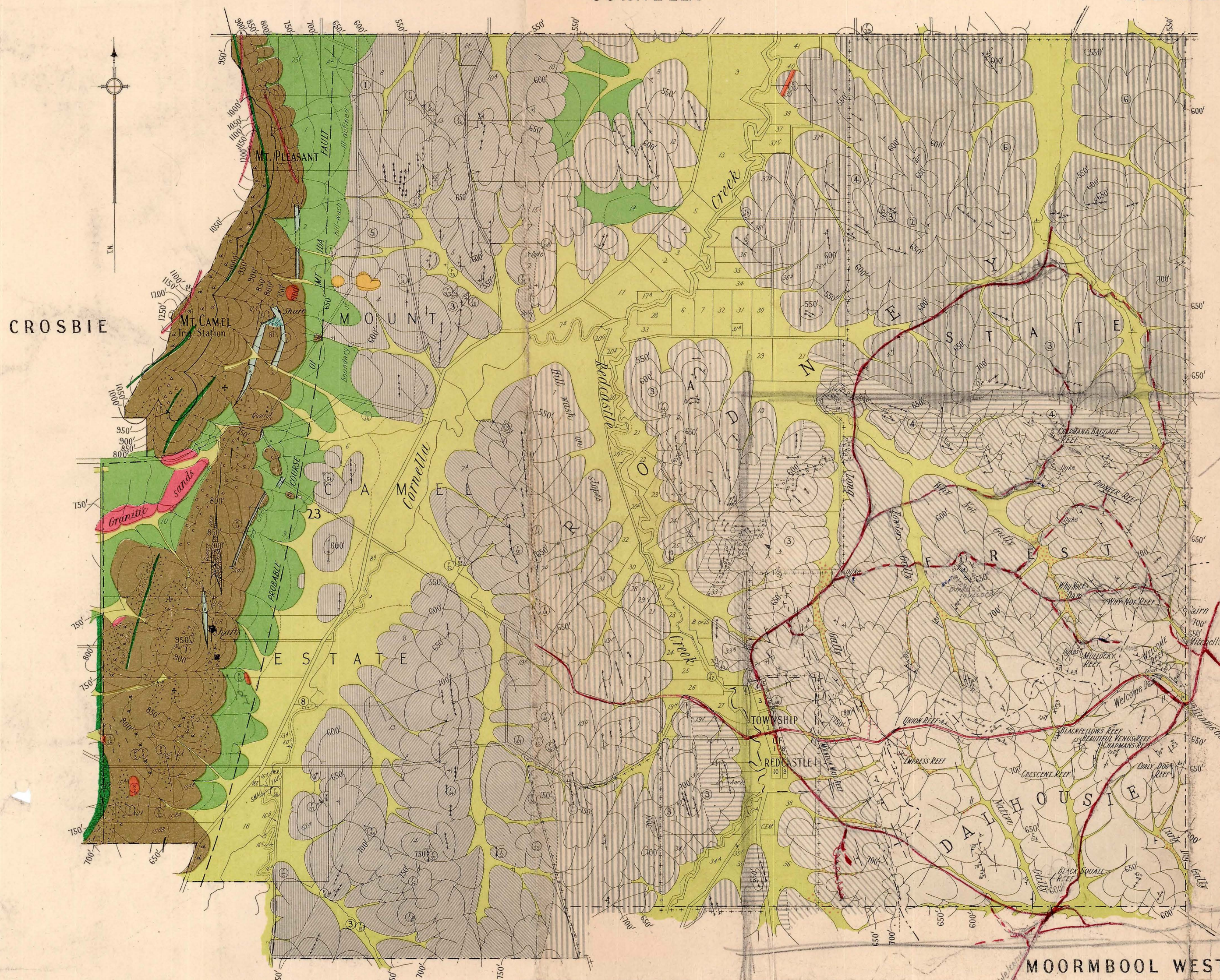
Scale 40 Chains to 1 Inch



REFERENCE

- Recent & Alluvial: River flats-soil and gravel, Hill wash, etc.
- Tertiary: High level gravels and ironstones, Granodiorite, Acid dykes and minor intrusions.
- Silurian:
 - Mudstones, Shales and Conglomerates
 - Pleurodictyum Beds
 - Pentamerus Beds
 - Burly Spirifer Beds
 - Upper Lamarotoechia Beds
 - Grammysia Band
 - Lower Lamarotoechia Beds
 - Encrinurus Chonetes Mudstone
 - Dargile Sandstones and Conglomerates
 - Graptolite Beds
 - Lower Dargile Mudstones
- Ordoevician:
 - Upper: Quartzites, Sandstones and Slates
 - Lower: Castlemainian, Bendigonian
- Cambrian:
 - Upper: Goldie Beds, Shales (Interbedded Ashes, etc.), Dinesius Hydroid Beds
 - Middle: Cherts
 - Pre-Middle: Schistose Diabase, Calcareo Siliceous Rocks, Ashes and Tuffs, Agglomerates, Dolerites, Undifferentiated

- Auriferous reefs (with underlie where possible). Dip and strike γ . Approximate contours
- Rock specimens (S) Fossil localities (F) Sandstone bars (S) Conglomerate bars (C)
- Alluvial gold (G) Aboriginal quarry (+)
- NOTES**
- 1) Bedded conglomerates and grits outcropping in washouts
 - 2) Fragmentary fossils.
 - 3) Mudstones
 - 4) Sandstones containing pebbles.
 - 5) Scattered pebbles from Silurian conglomerate
 - 6) Age of this belt of silurian doubtful.
 - 7) Flat bedded ash and tuff in well.
 - 8) Fossiliferous silurian mudstones in watercourse.



CROSBIE

CHERRINGTON

Ordoevician

Cambrian

DARGILE

MOORMBOOL WEST

Geologically and Topographically surveyed by D.E. Thomas, B.Sc.

Published 1940 Drawn by D.M.C.I.

To Costfield

1000