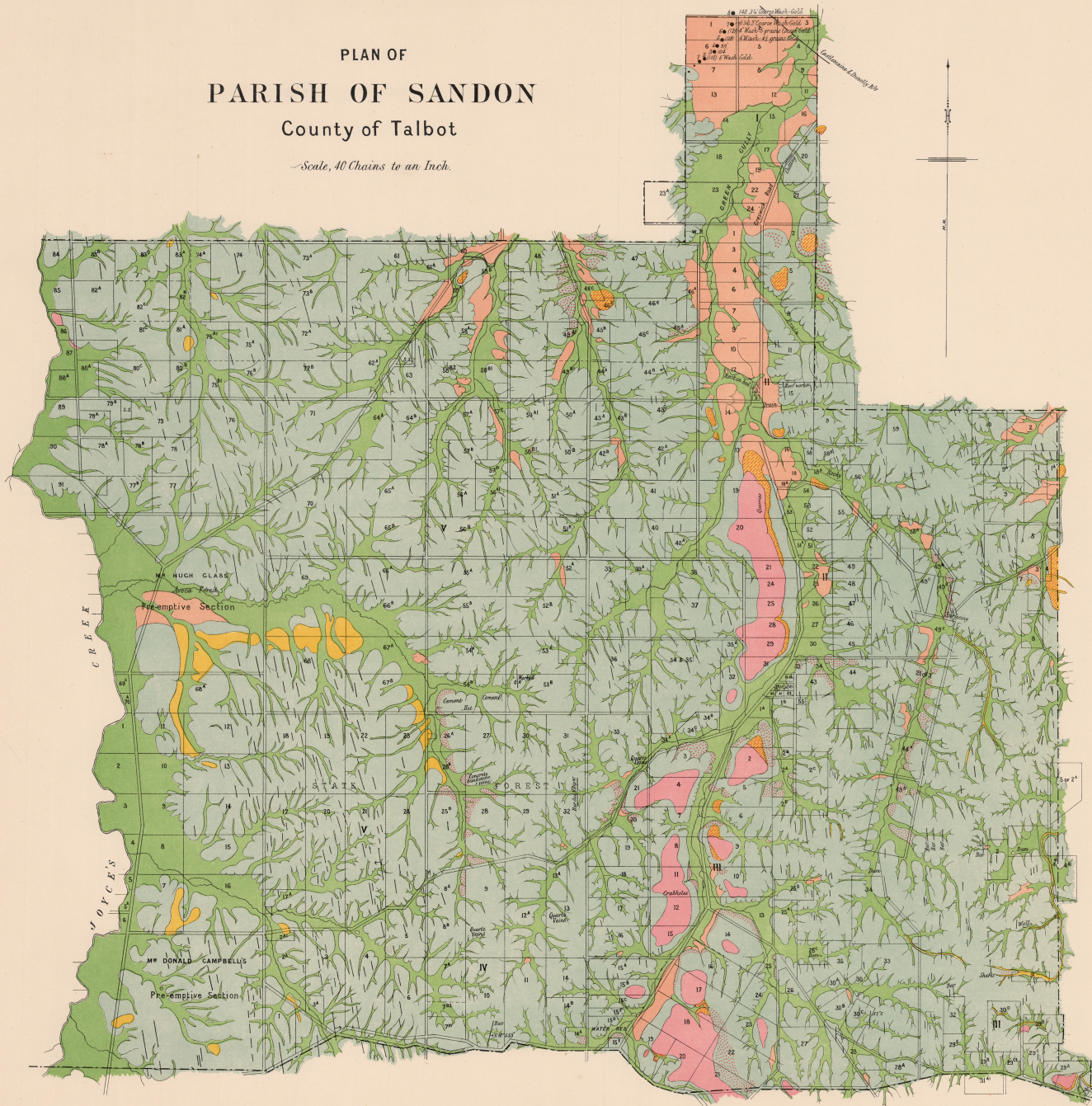


PLAN OF  
PARISH OF SANDON  
County of Talbot

Scale, 40 Chains to an Inch.



REFERENCE

- (River Terraces  
Alluvium and recent gravels (PLEISTOCENE))
- Sands & loam (UPPER NEWER PLIOCENE)
- Older low-level gravels (LOWER NEWER PLIOCENE)
- High-level Gravels and Cement (OLDER PLIOCENE)
- ORDOVICIAN
- BASALT
- Capping on Ordovician