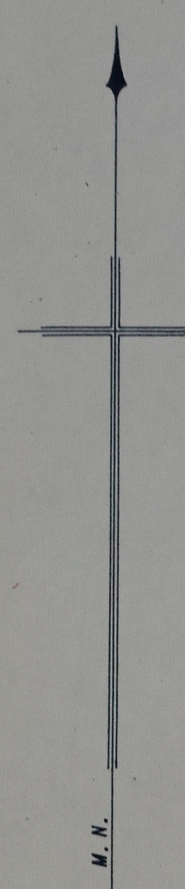
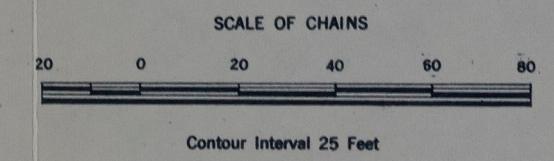


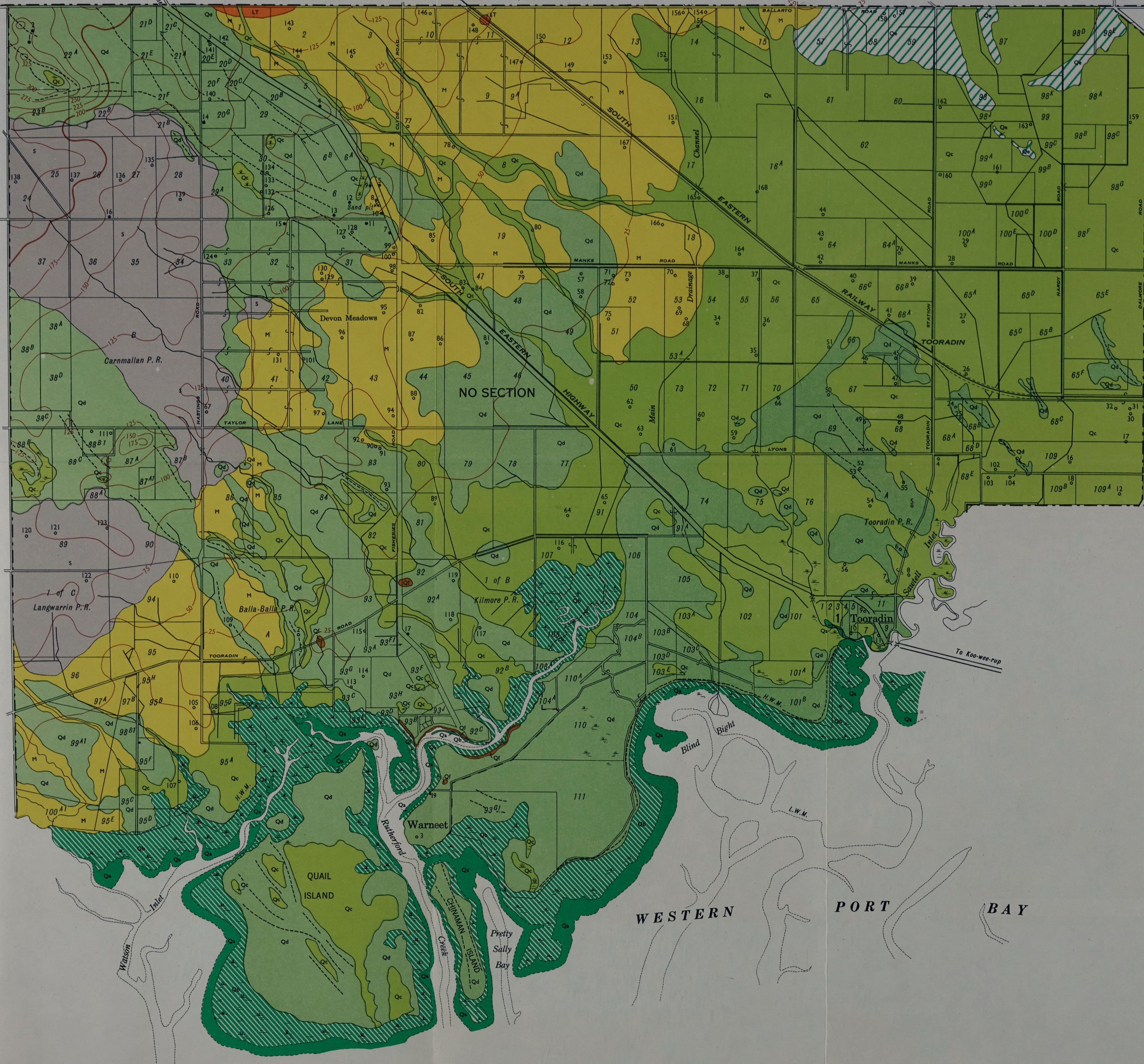
CRANBOURNE

SHERWOOD
COUNTY OF MORNINGTON



LANGWARRIN

KOO-WEE-RUP



- Quaternary
 - Qs Mangrove swamp
 - Qm Salt marsh
 - Qc Peaty clays, clays, etc. (Mainly swamp deposits)
 - Qd Wind-blown sands, dunes etc. and undifferentiated sandy soils
 - Qe Coarse deltaic sands
 - Qf Clayey sands and sandy clays
 - Tertiary
 - M Ferruginous sandstones and clayey sands
 - Oligocene
 - LT Basalt and basaltic clays
 - S Sandstones, siltstones and shales
- Mines Department bore 5 Private bore 4 Drain
- High water mark H.W.M. Low water mark L.W.M.
- Swamp or marsh Prominent dune ridges
- Contours 150 175



Geology by J. J. Jenkin, B.Sc.
D. E. Thomas, D.Sc., Chief Government Geologist.
Base adapted from Lands Department cadastral surveys
Drawn for reproduction in the Department of Mines, Melbourne,
Victoria, by G. M. Papp, 1960, under the direction of D. W. McInnes,
M.A.I.C., Chief Draughtsman
Issued by J. B. Tilley, Secretary for Mines, under the authority of the
Hon. W. J. Mibus, M.L.A., Minister of Mines
A. C. Brooks, Government Printer