

STANLEY

Scale - 40 Chains to One Inch.



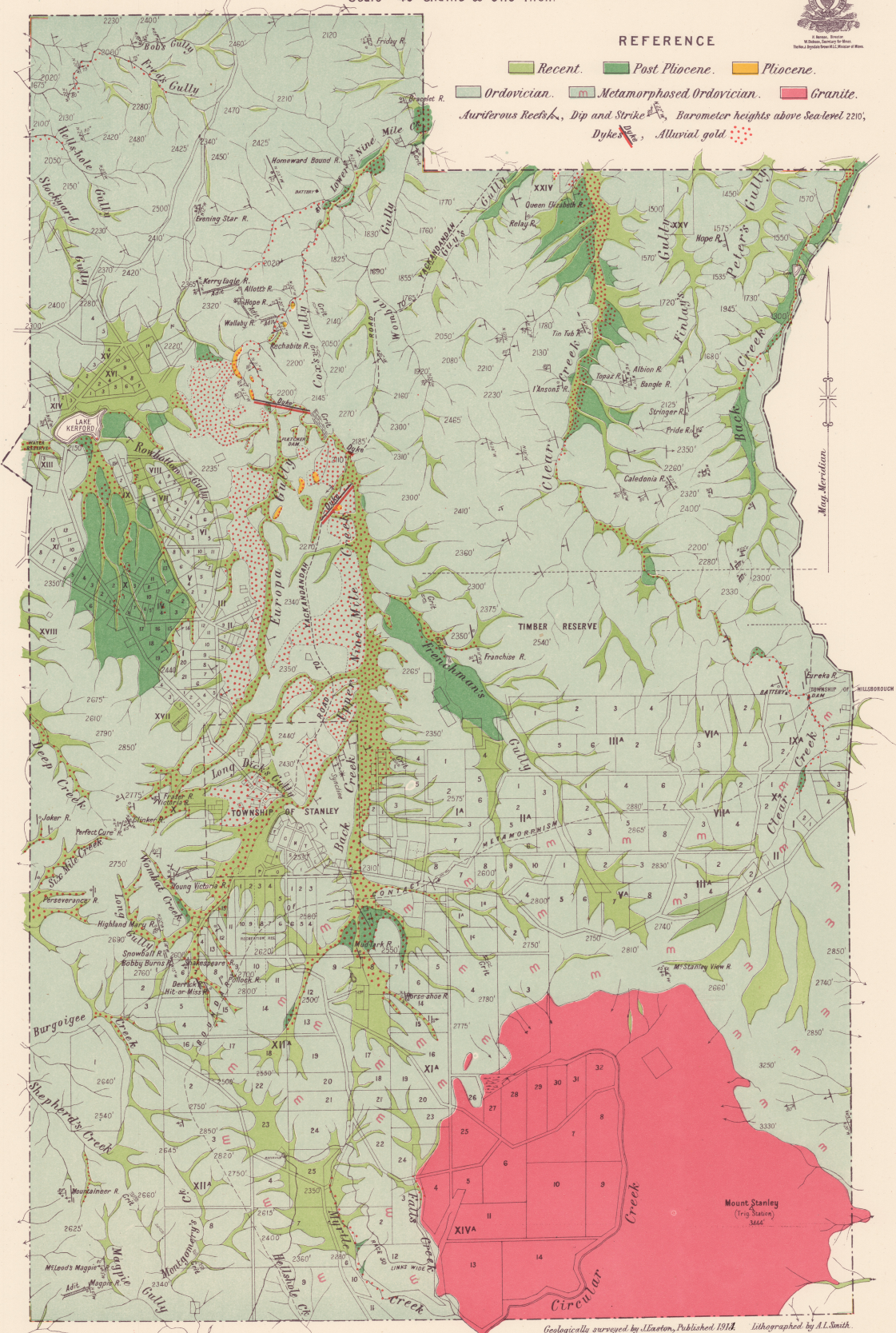
REFERENCE

-
 Recent.
 Post Pliocene.
 Pliocene.

-
 Ordovician.
 Metamorphosed Ordovician.
 Granite.

-
 Auriferous Reefs, Dip and Strike.
 Barometer heights above Sea-level 2200'.

-
 Dykes.
 Alluvial gold.



Geologically surveyed by L. Eaton, Published 1912. Lithographed by A.L. Smith.