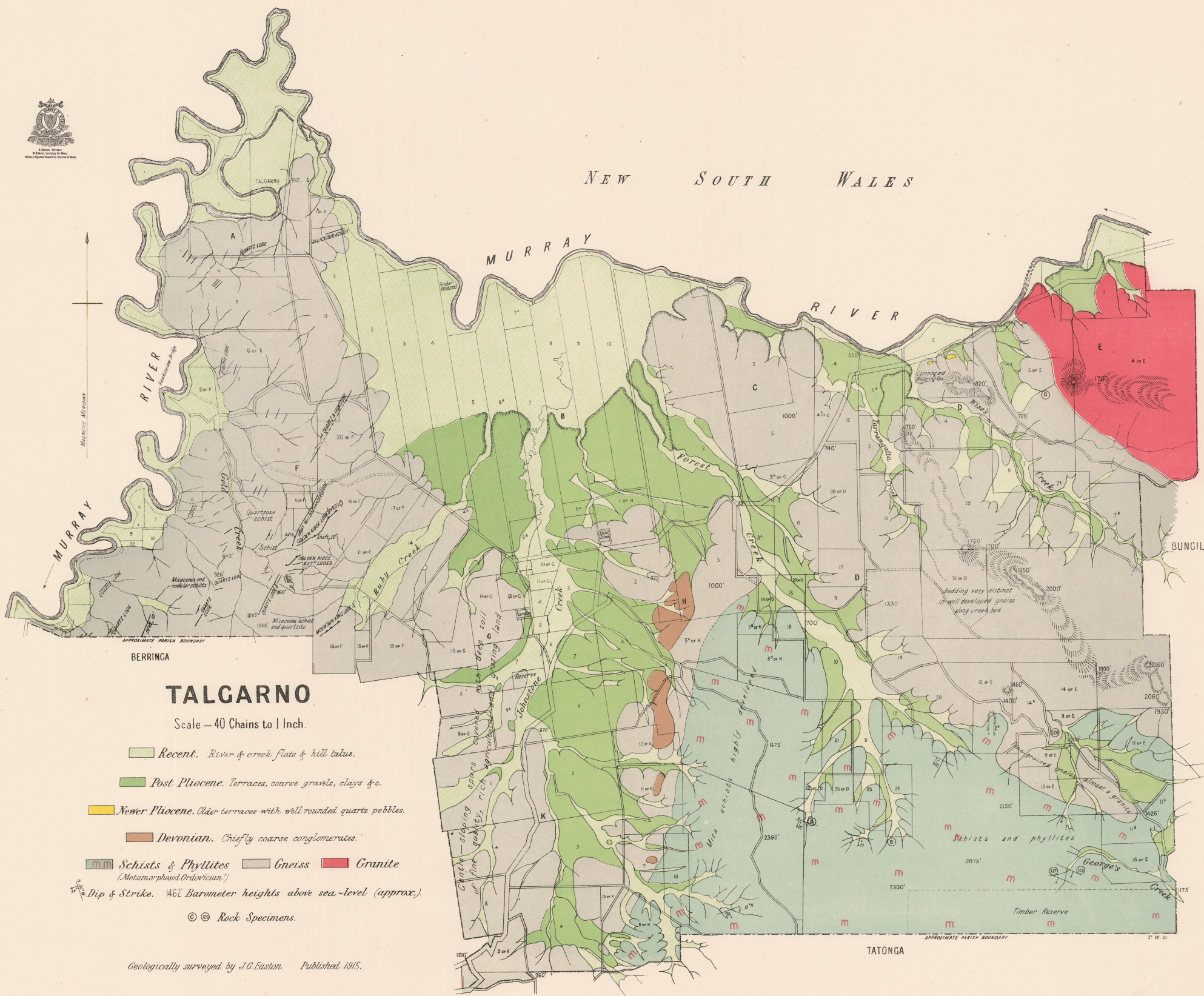




NEW SOUTH WALES



TALGARNO

Scale - 40 Chains to 1 Inch.

- Recent. River & creek flats & hill talus.
- Post Pliocene. Terraces, coarse gravels, clays &c.
- Newer Pliocene. Older terraces with well rounded quartz pebbles.
- Devonian. Chiefly coarse conglomerates.
- Schists & Phyllites    Gneiss    Granite  
(Metamorphosed Ordovician.)
- Dip & Strike. 1462' Barometer heights above sea-level (approx.)
- Rock Specimens.

Geologically surveyed by J.G. Easton. Published 1915.