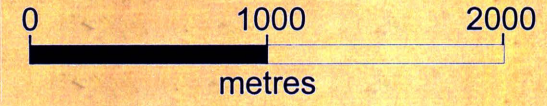


TANJIL EAST

COUNTY OF TANJIL

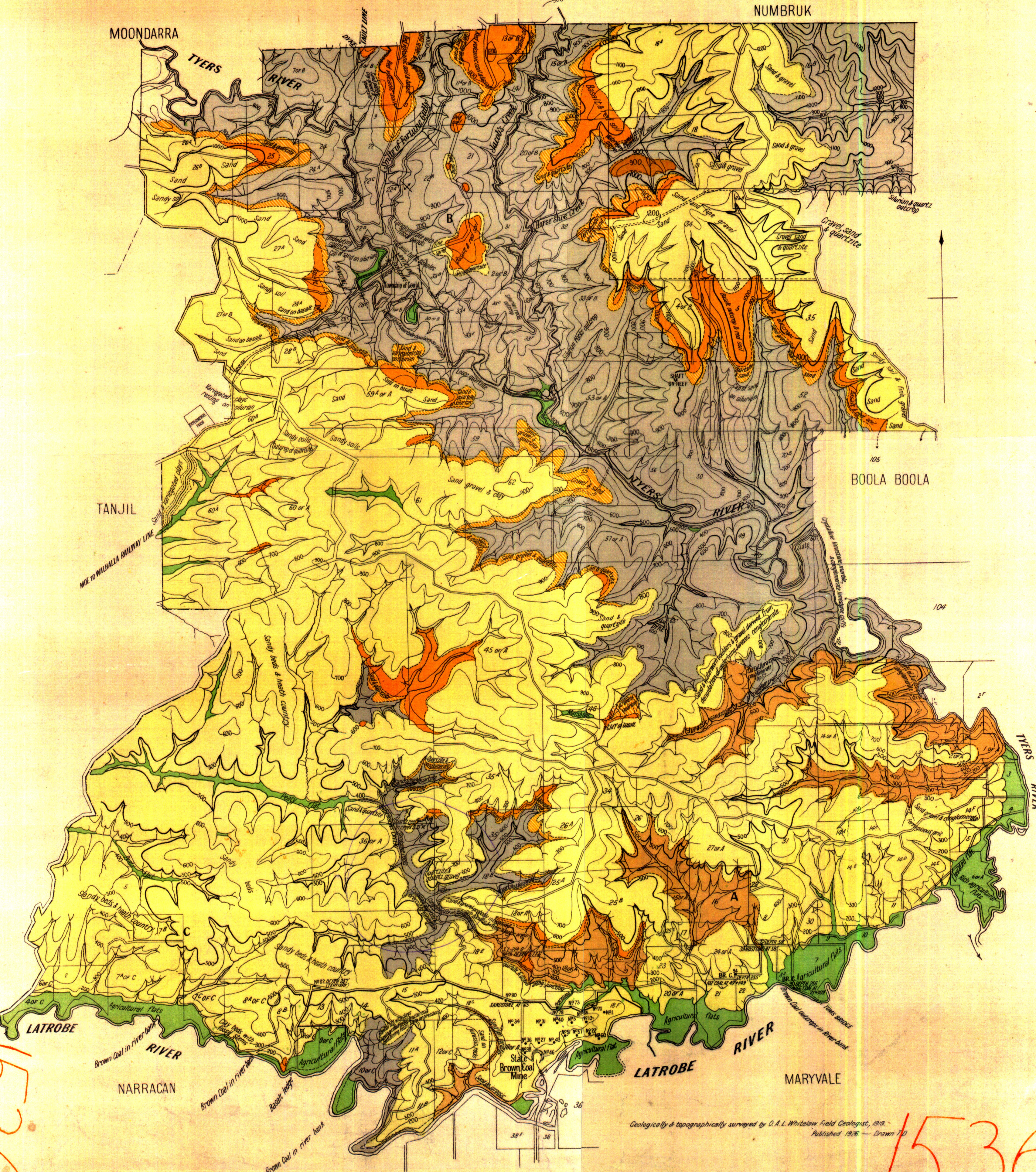
Scale. 40 Chains to 1 Inch.



REFERENCE.

- RECENT** Alluvial flats & hill wash
- TERTIARY (Post volcanic)** Sand clay & fine gravel
- TERTIARY (Pre-volcanic)** Sand, gravel, clay, quartzite & brown coal
- VOLCANIC (Miocene or older)** Basalt tuff & decomposition products
- JURASSIC** (Conglomerates, sandstones & shales with occasional seams of black coal)
- SILURIAN** (Shales, mudstones, sandstones quartzites, grits & conglomerates with interbedded basic lavas & tuffs & limestones in places)

BR. C. Brown Coal at bore sites. Aneroid contours



1536