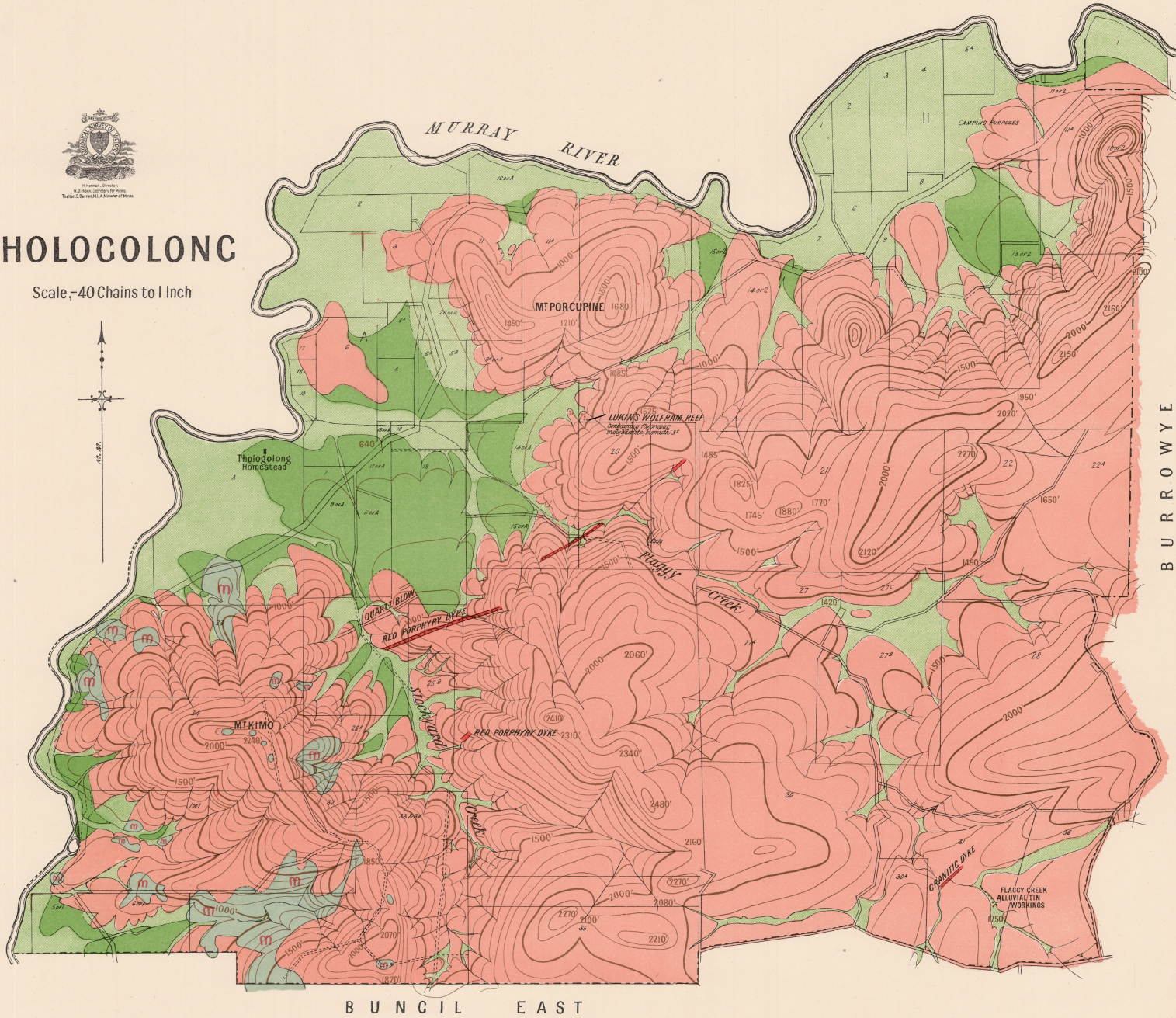
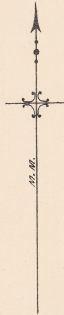




THOLOGOLONG

Scale, -40 Chains to 1 Inch



Recent (Alluvial flats & hill talus)
 Pliocene (Terraces of gravels, sands & clays)
 m m Metamorphosed Ordovician (Indurated schists & sandstones)
 Granite

Dykes / Quartz reefs
 Alluvial tin workings
 1820' Aneroid heights above sea level
 -1000' -500' Approximate contours

Geologically surveyed by J. G. Easton, Assistant Field Geologist.

Published 1920. Litho by W.E.B.