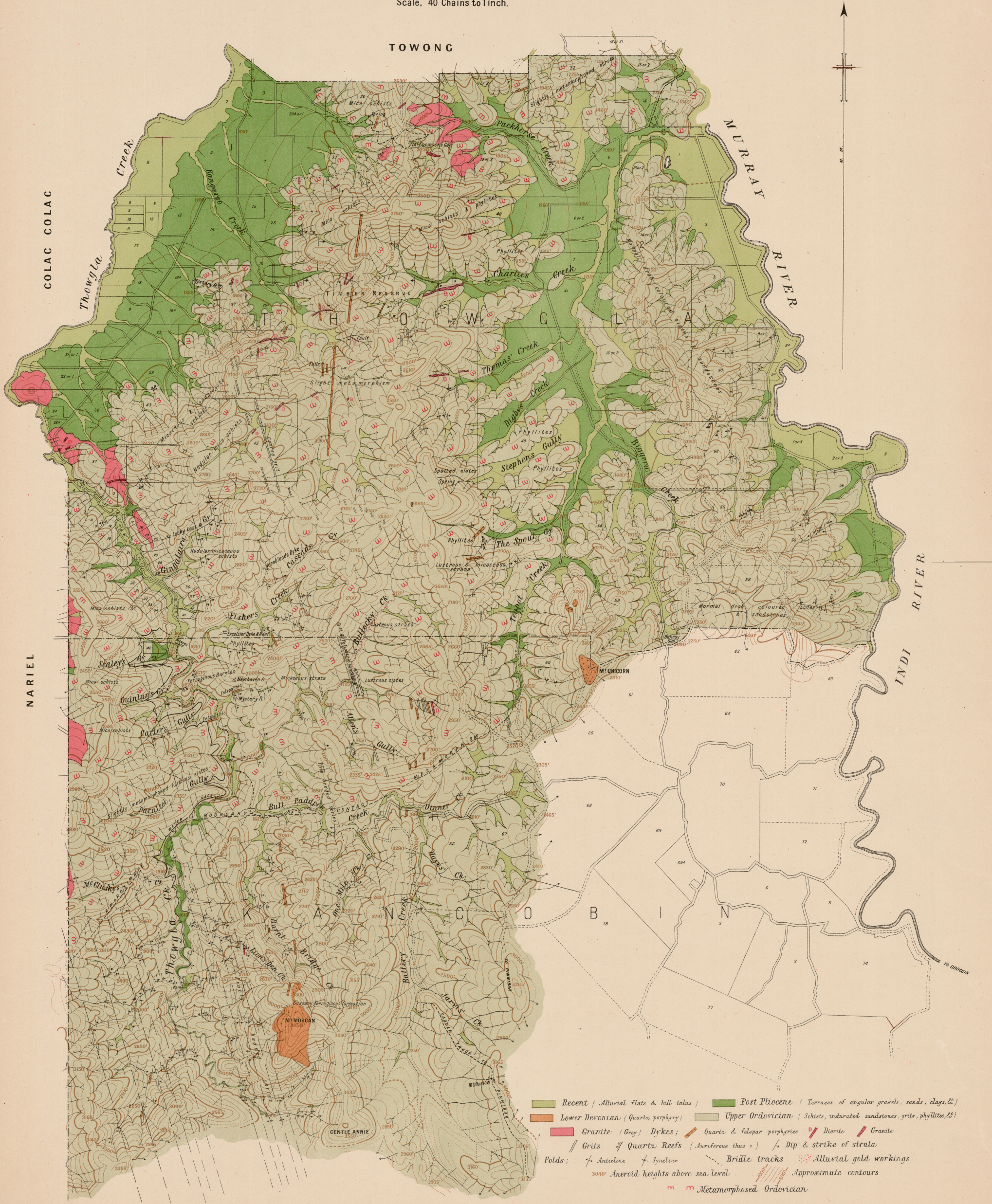


# THOWGLA AND PART OF KANCOBIN COUNTY OF BENAMBRA

Scale, 40 Chains to 1 inch.



- Recent (Alluvial flats & hill talus)
- Post Pliocene (Terraces of angular gravels, sands, clays, &c)
- Lower Devonian (Quartz porphyry)
- Upper Ordovician (Schists, indurated sandstones, grits, phyllites, &c)
- Granite (Grey) Dykes;  Quartz & felspar porphyries
- Diorite  Granite
- Grits  Quartz Reefs (Auriferous thus o)
- Dip & strike of strata
- Folds:  Anticline  Syncline
- Bridle tracks  Alluvial gold workings
- 3000' Aneroid heights above sea level
- Approximate contours
- m m Metamorphosed Ordovician