

TOORA

COUNTY OF BULN BULN



Scale, 40 chains to one inch

BINGINWARRI

- Recent, Sands, loam, clays & peaty mud flats. Sand dunes & wind blown sand.
- Post Pliocene, Sandy loam, swampy in places.
- Tertiary; (Post Volcanic) Sand, grit, gravel, etc.
- Tertiary; (Older Volcanic) Basalt & basaltic tuff.
- Jurassic, Mudstones, shales & felspathic sandstones.

Anemoid heights, 620'

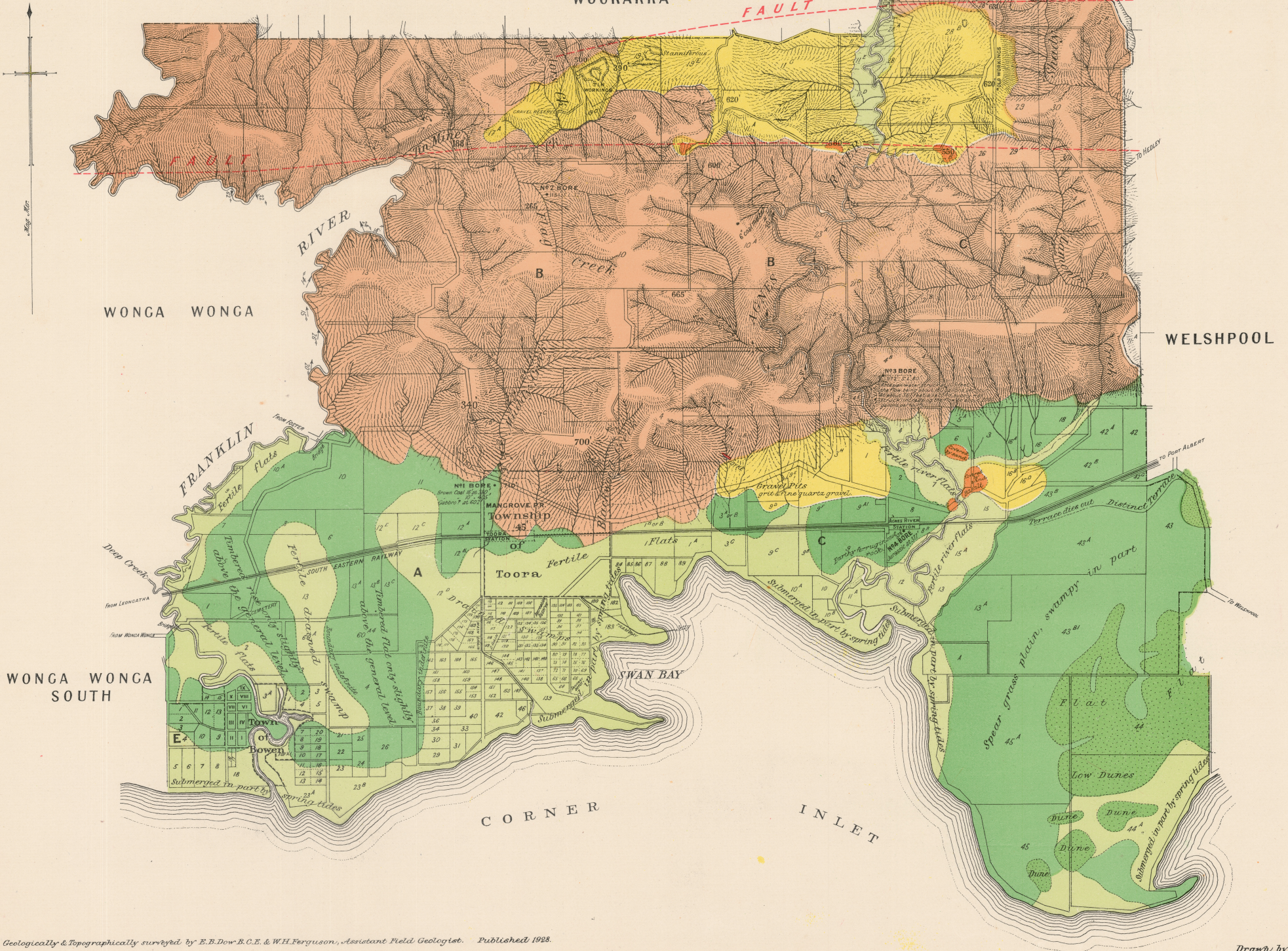
Strike & dip,

Dykes,

Tin workings

WOORARRA

FAULT



WONGA WONGA SOUTH

CORNER

INLET