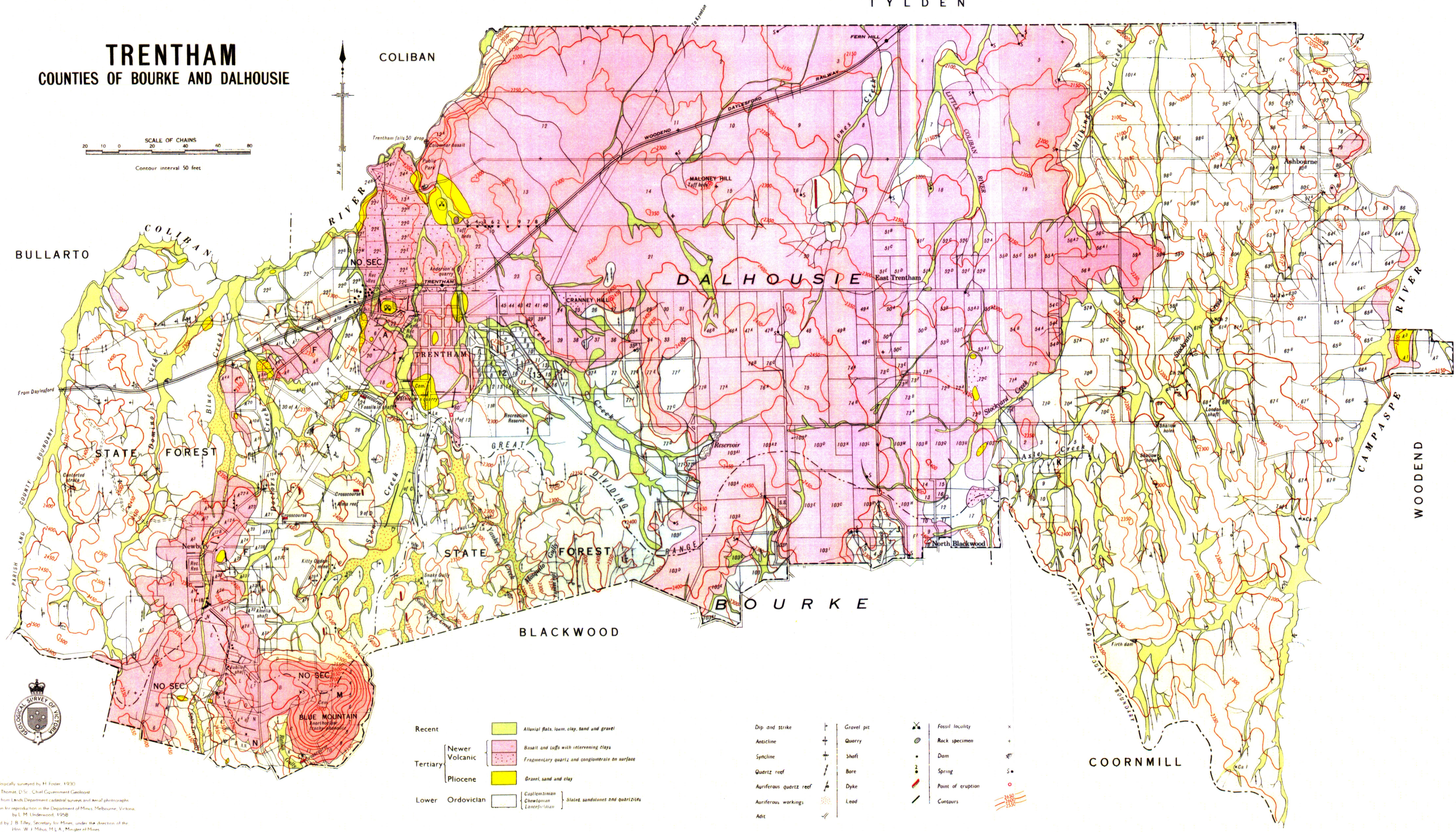
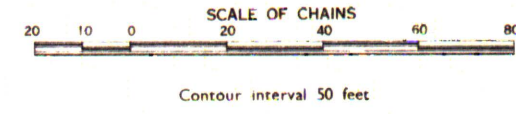


# TRENTHAM

## COUNTIES OF BOURKE AND DALHOUSIE



Recent		Alluvial flats, loam, clay, sand and gravel
Tertiary		Basalt and tuffs with intervening clays
		Fragmentary quartz and conglomerate on surface
Pliocene		Gravel, sand and clay
Lower Ordovician		Castlemainian
		Chewtonian
		States sandstones and quartzites

Dip and strike		Gravel pit		Fossil locality	
Anticline		Quarry		Rock specimen	
Syncline		Shaft		Dam	
Quartz reef		Bare		Spring	
Auriferous quartz reef		Dyke		Point of eruption	
Auriferous workings		Lead		Contours	
Adit					

Geologically surveyed by H. Foster, 1930.  
 D. F. Thomas, D.Sc., Chief Government Geologist.  
 Base from Lands Department cadastral surveys and aerial photographs.  
 Drawn for reproduction in the Department of Mines, Melbourne, Victoria,  
 by I. M. Underwood, 1958.  
 Issued by J. B. Tilley, Secretary for Mines, under the direction of the  
 Hon. W. J. Minto, M.L.A., Minister of Mines.  
 © Crown Copyright 1958.