

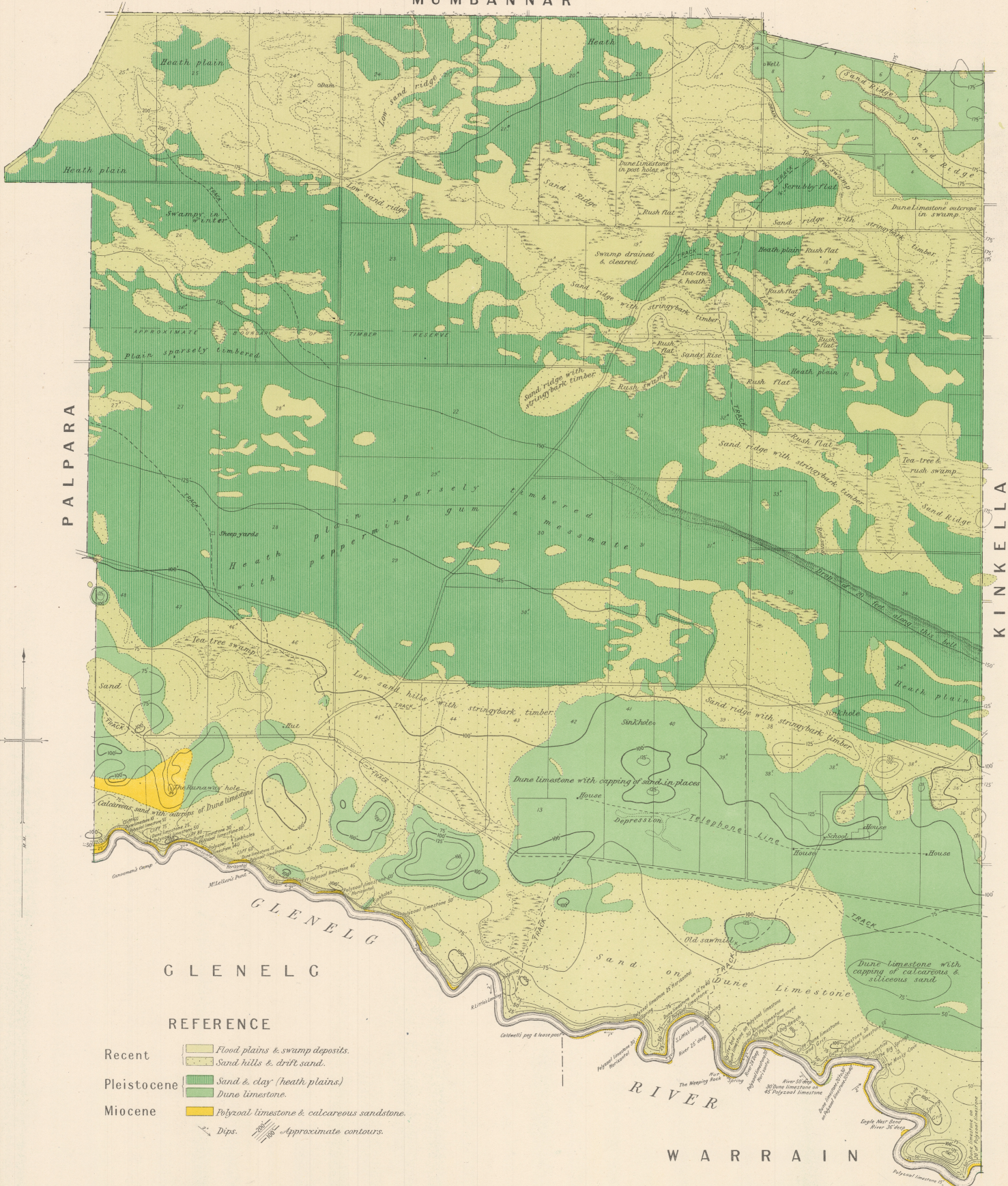
WANWIN COUNTY OF FOLLETT

Scale, 40 Chains to 1 Inch.



W. Bingham, Director
H. Lovell, Acting Director for Mines
The Hon. J. L. S. B. C. Minister of Mines.

MUMBANNAR



REFERENCE

- Recent
 - Flood plains & swamp deposits.
 - Sand hills & drift sand.
- Pleistocene
 - Sand & clay (heath plains)
 - Dune limestone.
- Miocene
 - Polyzoal limestone & calcareous sandstone.
- Dips.
- Approximate contours.