

# WESTON COUNTY OF RODNEY

Scale, 40 chains to one inch.



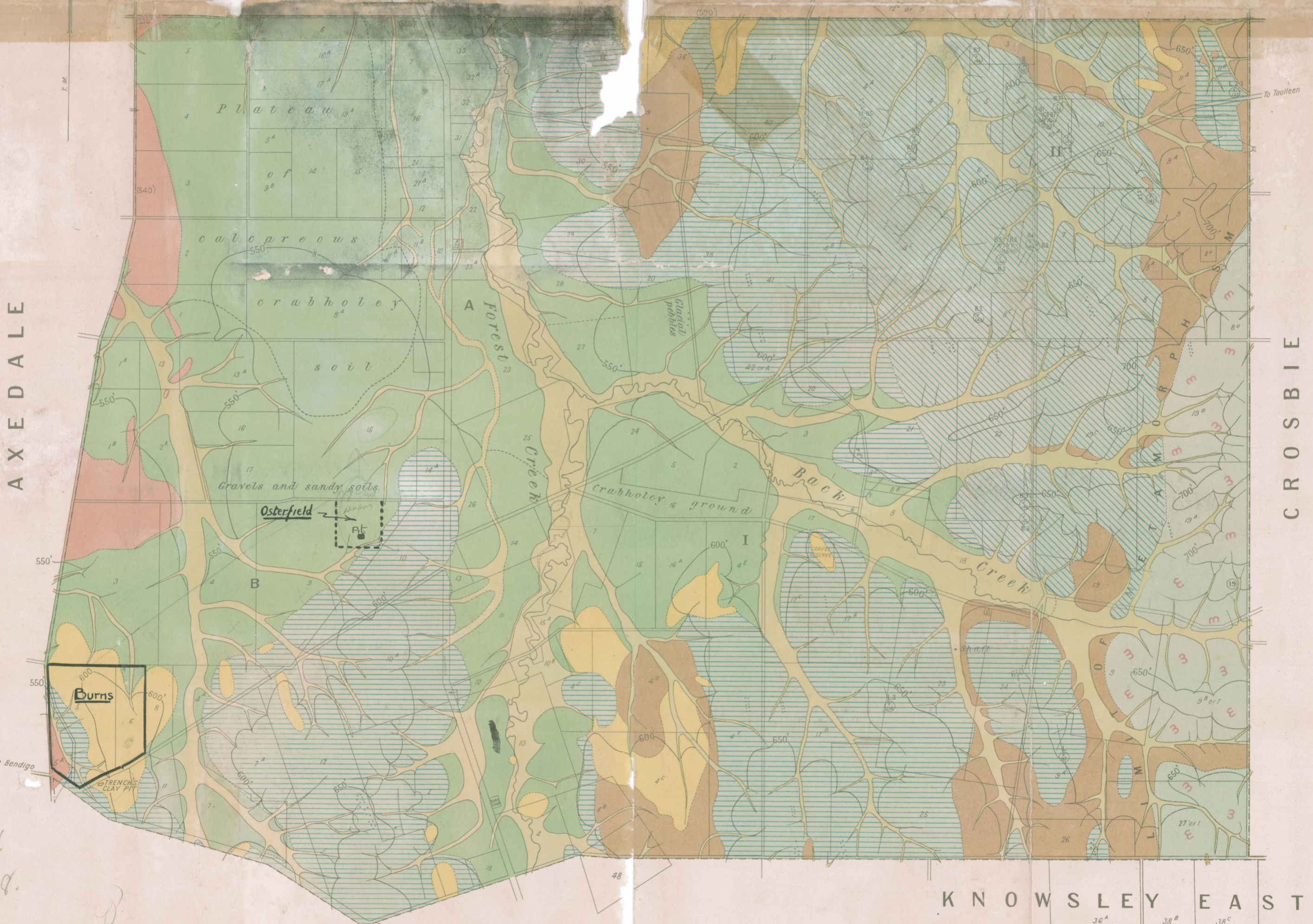
H.M. Amieson, Acting Secretary for Mines,  
The Hon. J.P. Jones, M.L.C., Minister of Mines

## REFERENCE

UR 1963/49

- Recent & Alluvial  River Flats, soil & gravel. Post Pleistocene
- Permo-Carboniferous  Glacial clays, tillite & conglomerate.
- Ordovician  (Quartzites, Sandstones & Slates)
- Tertiary  Newer Basalts.
- Pre-Basaltic clays & gravels.
- Bendigo Beds, Sub zones B<sup>1</sup>, B<sup>2</sup>, B<sup>3</sup>, B<sup>4</sup>, B<sup>5</sup>
- Lancelfield Beds, Sub zones L<sup>1</sup>, L<sup>2</sup>, L<sup>3</sup>, L<sup>4</sup>, L<sup>5</sup>
- Metamorphosed strata.
- Strike & dip
- Quartz pits
- Approximate contours  500, 550, 600, 650, 700
- Fossil localities
- Specimen localities

## MUSKERRY



AXEDALE

CROSBIE

KNOWSLEY

KNOWSLEY EAST

576  
438