

WYEEBOO

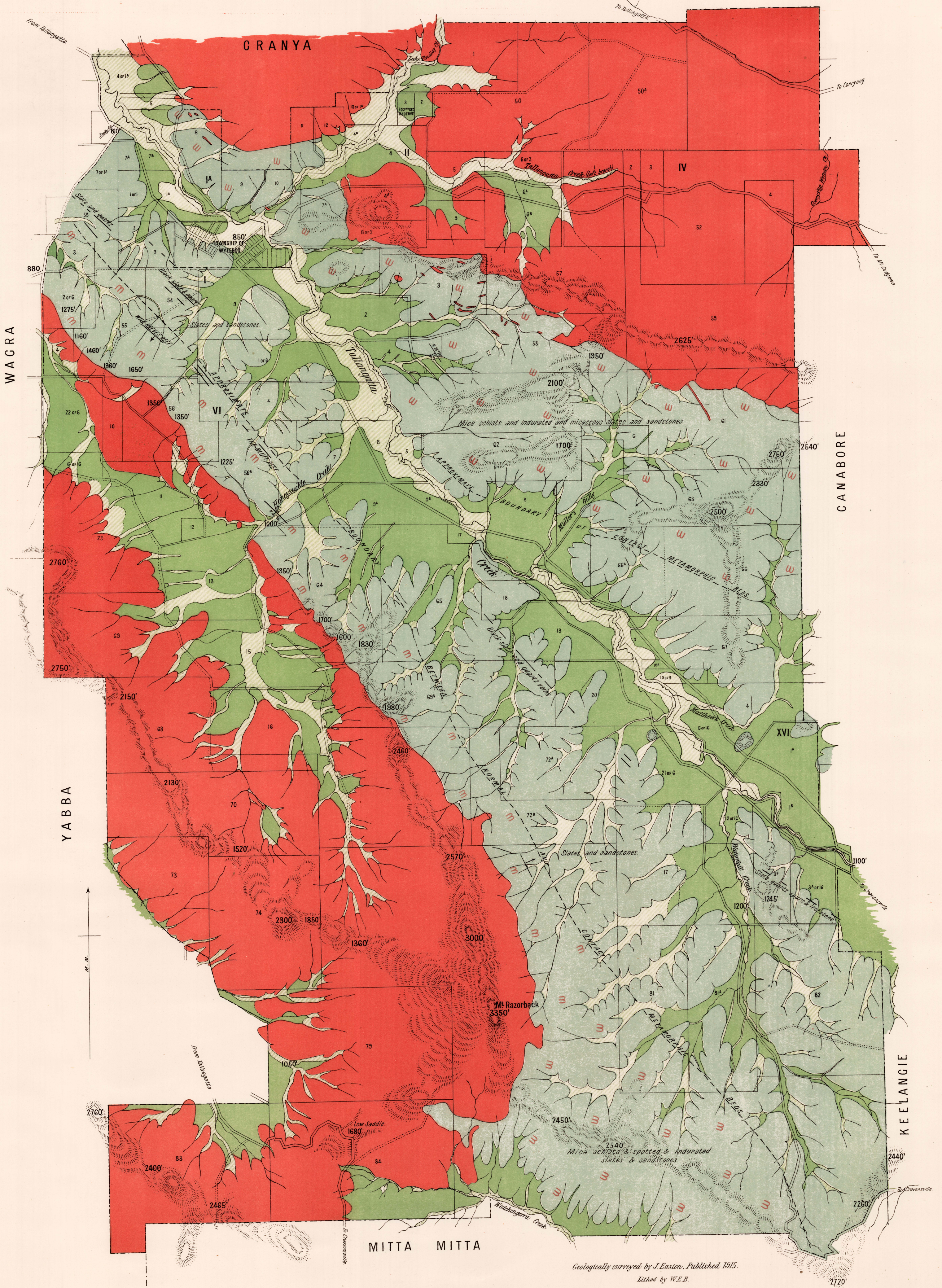
Scale, - 40 Chains to 1 inch.



Survey of Western Australia
 H. H. Sturt, Director
 H. W. H. Murray, Secretary for Works
 H. H. Sturt, Director of Survey

REFERENCE

- Recent**
Alluvial flats
 - Post Pliocene**
River terraces
 - Ordovician**
Slates & sandstones
 - m** **Metamorphosed Ordovician**
Schists, micaceous slates, etc.
 - Granite**
- Quartz Reefs (mostly veins & spurs in slate beds)
 Dip & strike
 2825' Barometer heights above sea-level.



Geologically surveyed by J. Easton. Published 1915.
 Edited by W.E.B.